



Antwerpen 1894.

GULDMEDALJ Stockholm 1897.

Glasbruket erhöj
Sifvermedalj
&
Stockholmutställningen
1897.



Glasbruket erhöj
Sifvermedalj
&
Stockholmutställningen
1897.



Lübeck 1895.

ALLM. TELEFON
36 59

RIKSTELEFON
5 36

LAMPOR OCH LAMPDELAR

från

AKTIEBOLAGET

Arvid Böhlmarks Lampfabrik

STOCKHOLM

21 HÖGBERGSGATAN 21

UTSTÄLLNINGSLOKALER: *Norrmalmstorg 4, St. Nygatan 33.*

FÖRSÄLJNINGSBODAR:

8 Hötorget 8 * 3 Götgatan 3 * 21 Högbergsgatan 21.



Försäljning af
PUKEBERGS GLASBRUKS
tillverkning

ETABLERAD
1872



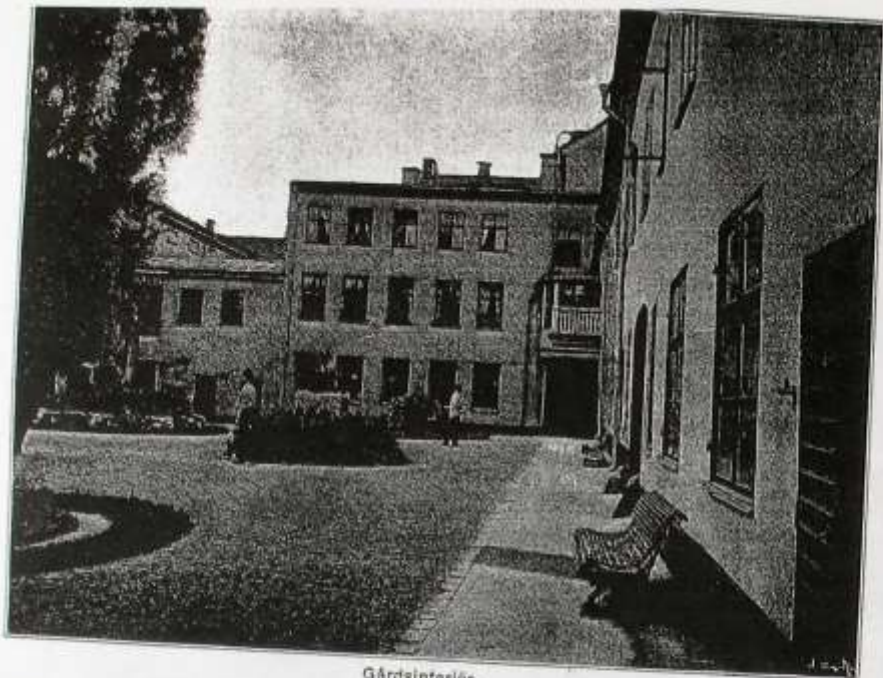
Försäljning af
PUKEBERGS GLASBRUKS
tillverkning

ETABLERAD
1872

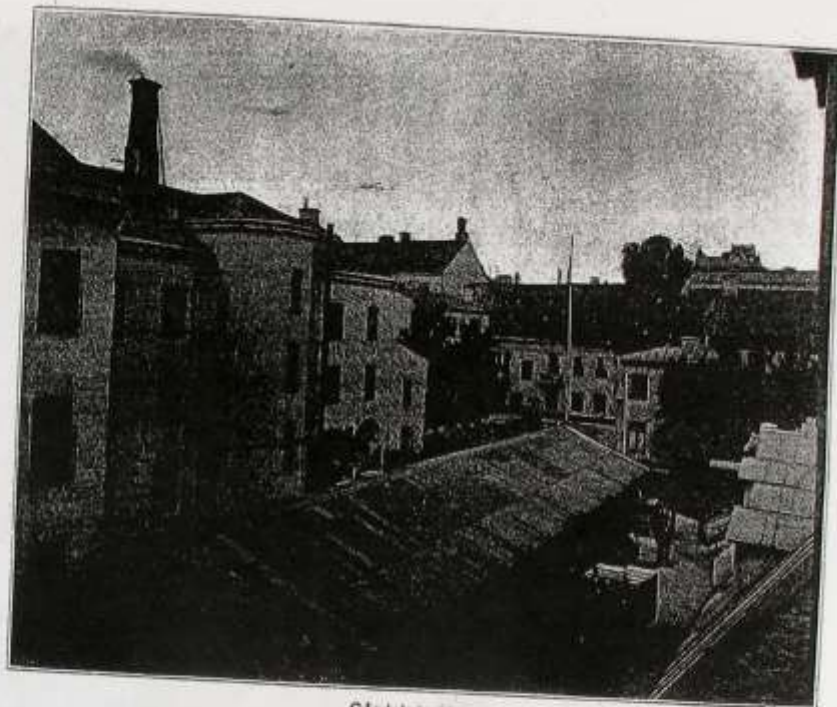


STOCKHOLM: CENTRAL TRYCKERIET, 1899

Se omslagets öfriga sidor!



Gårdsinteriör.



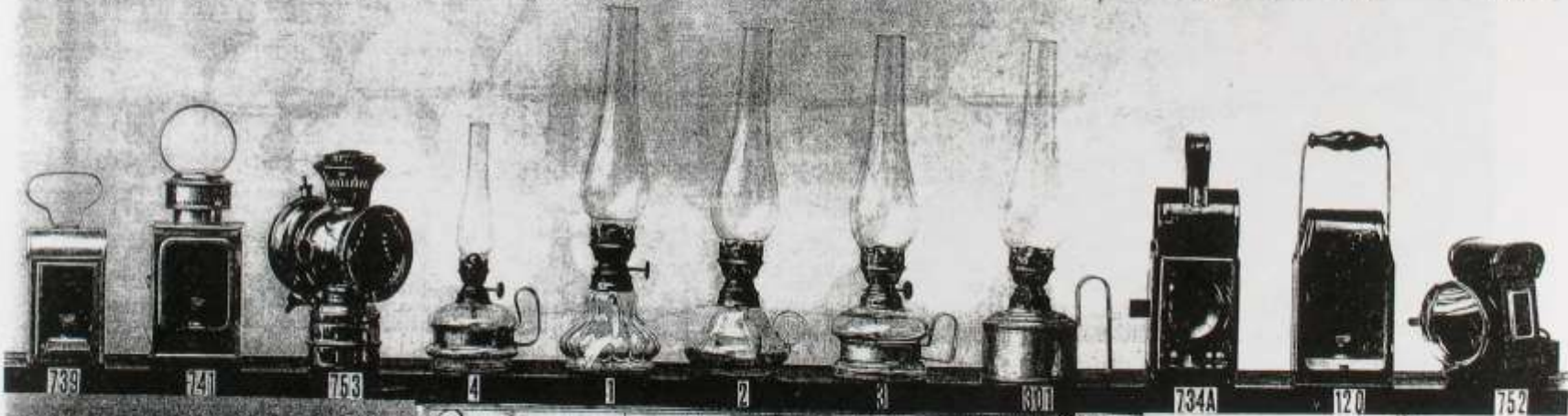
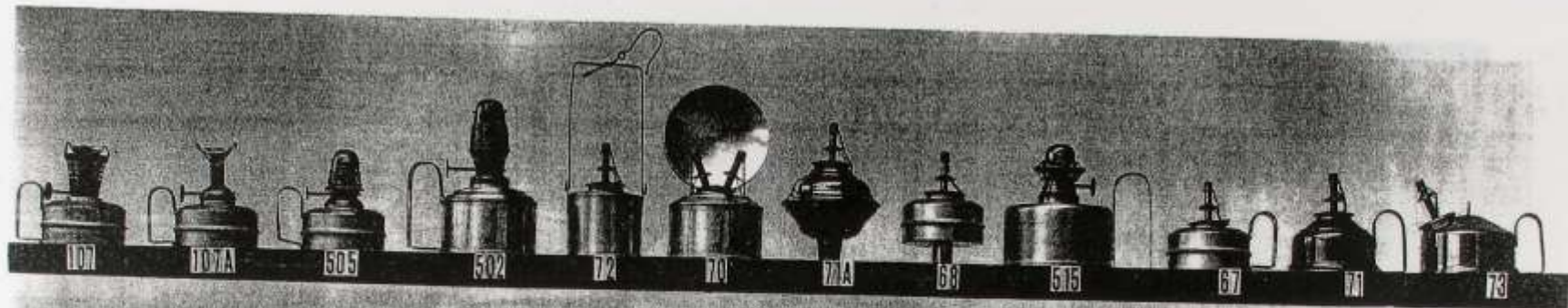
Gårdsinteriör.



Metalverkstaden.

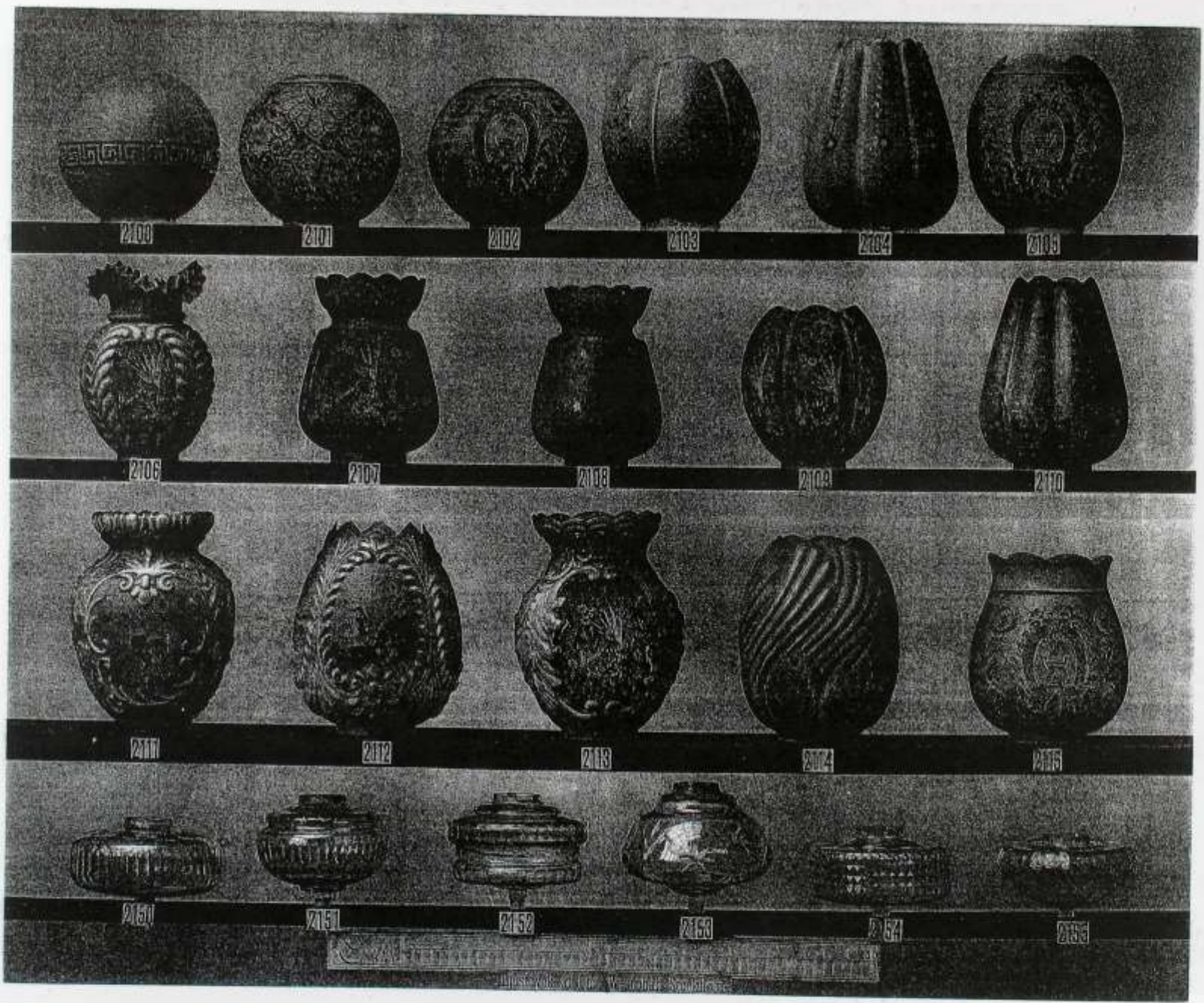


Svarfvarverkstaden.



cm

Curry & Co. Westöhal, Stockholm



2100



2101



2102



2103



2104



2105



2106



2107



2108



2109



2110



2111



2112



2113



2114



2115



2150



2151



2152



2153



2154



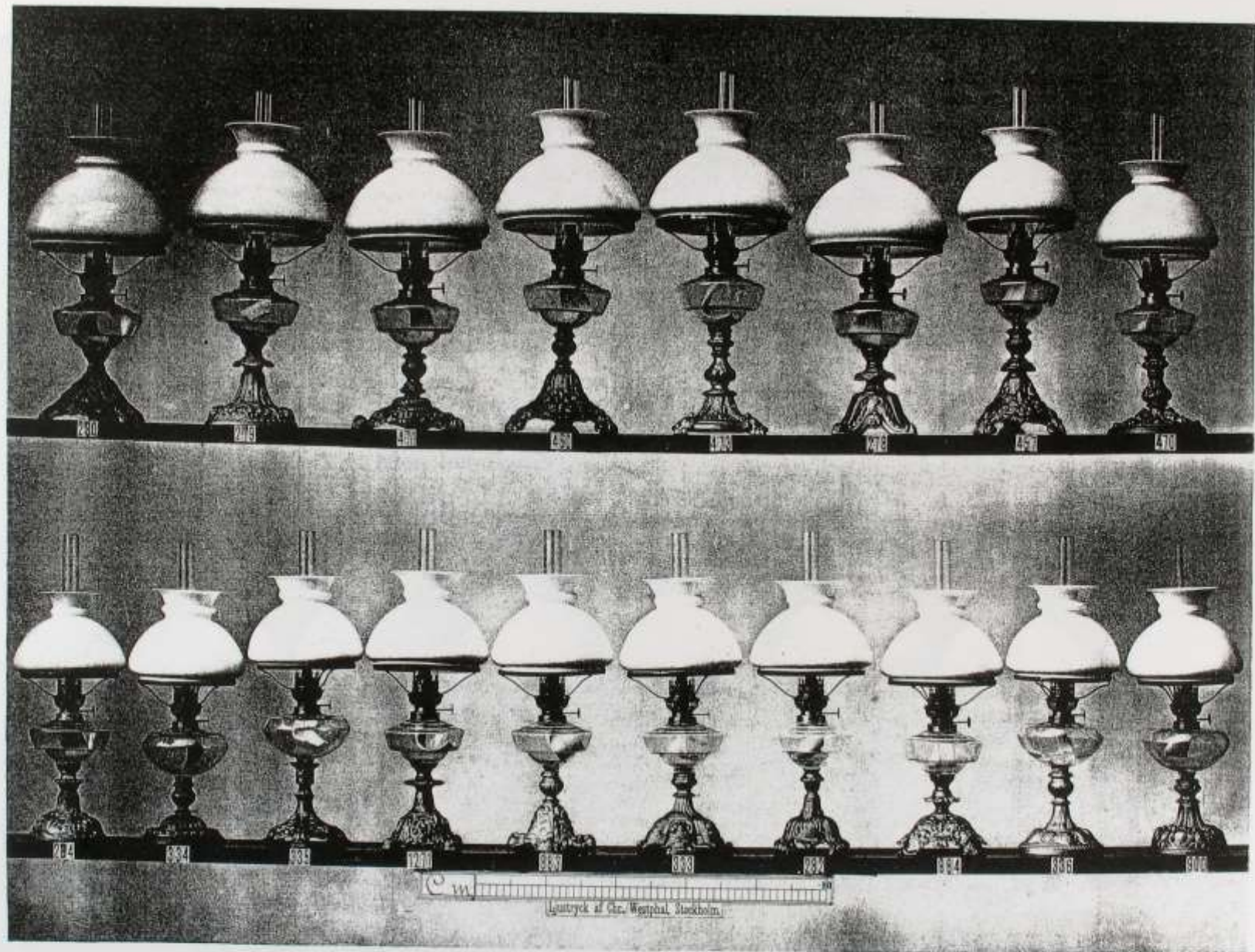
2155

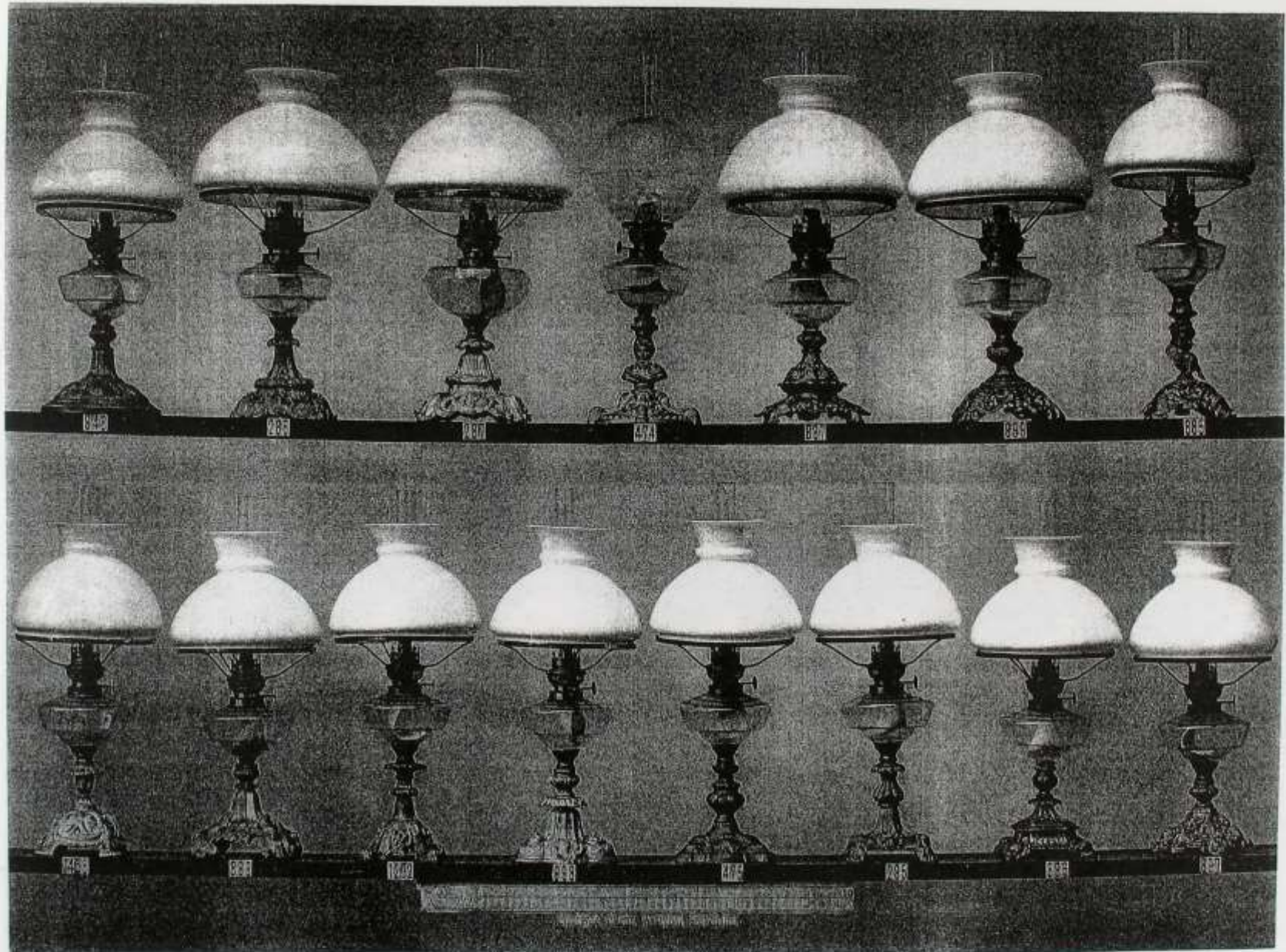
Музей К. М. Восточной Азии



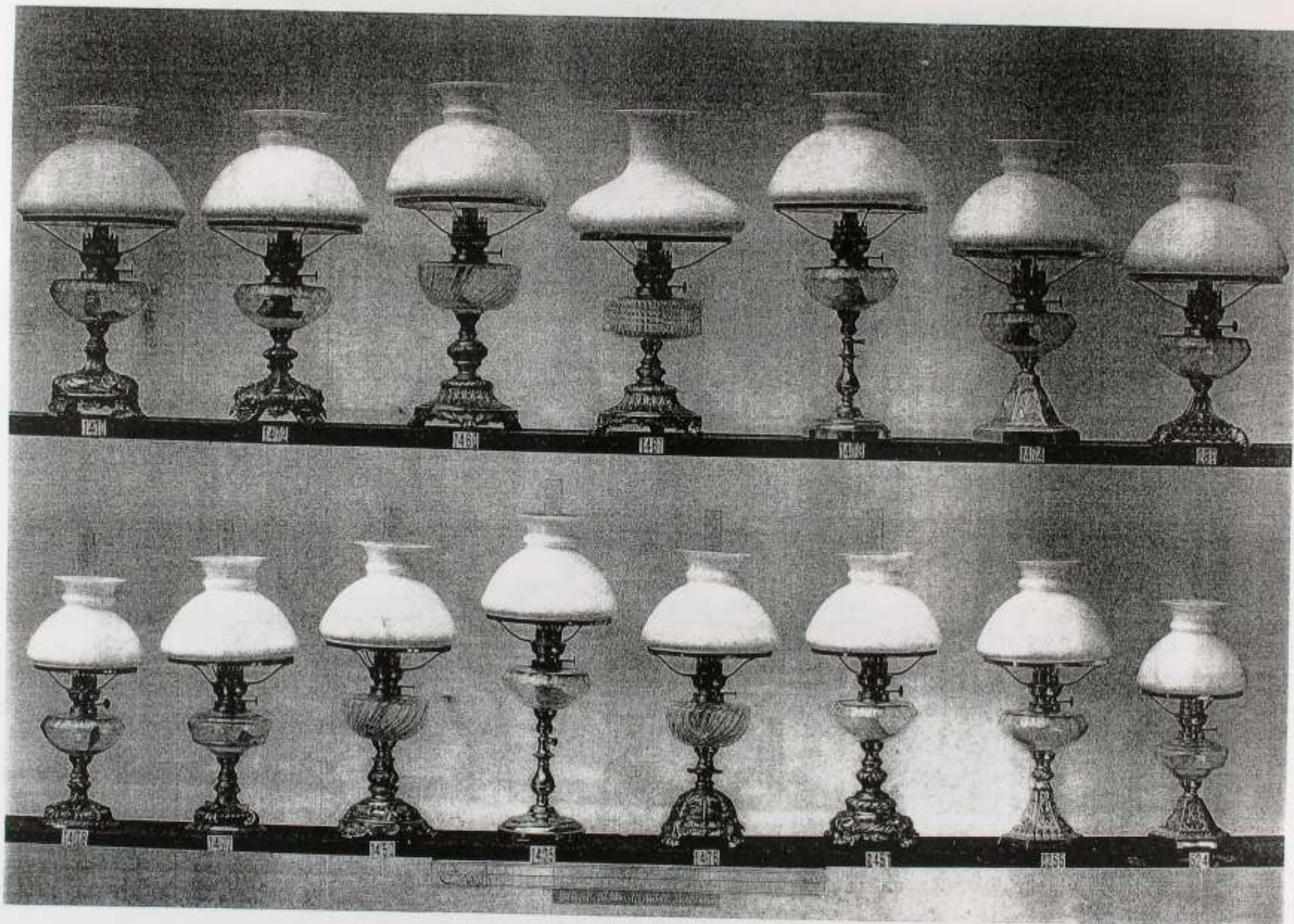


Carlens & Wessphal, Stockholm.

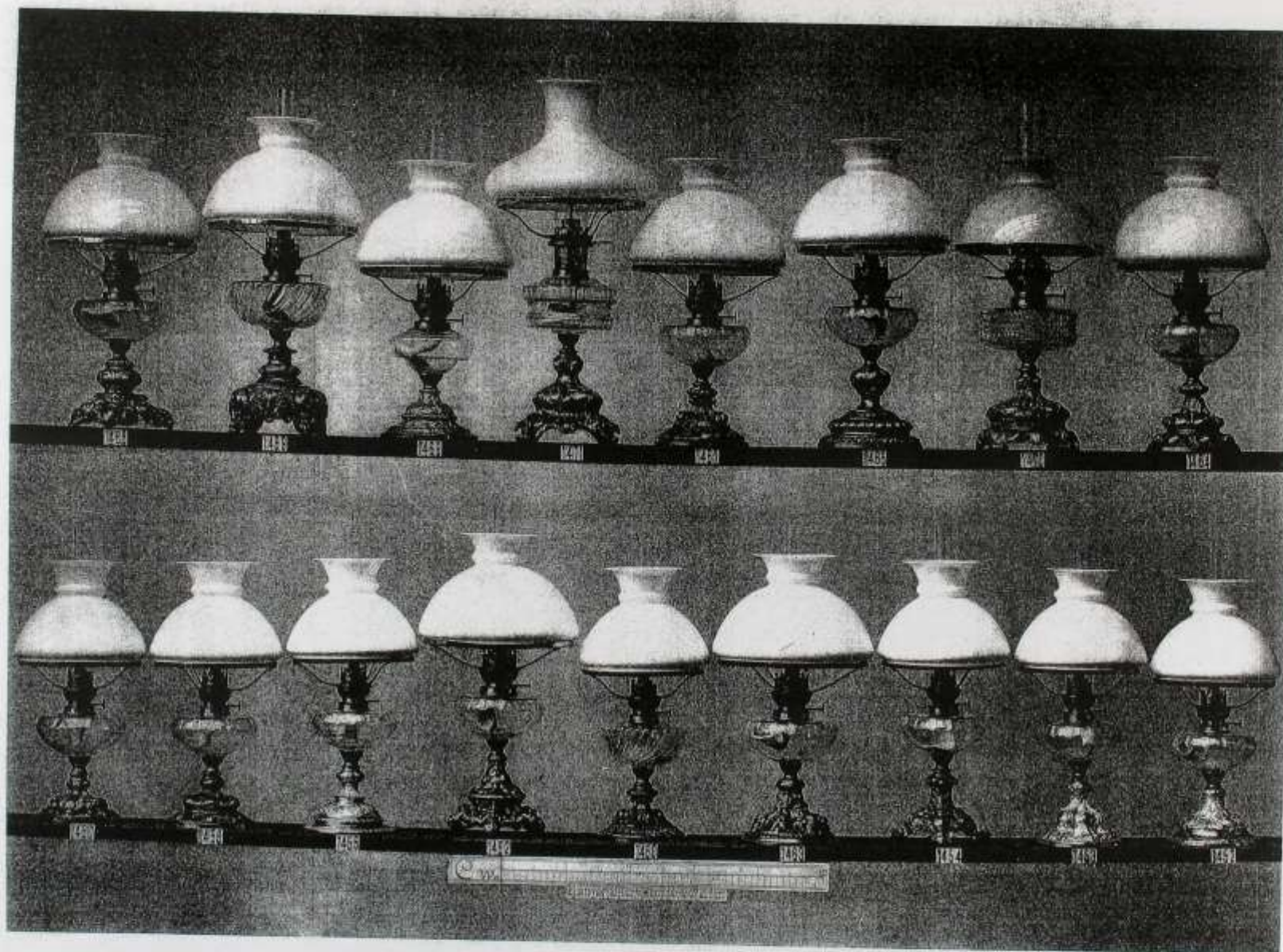


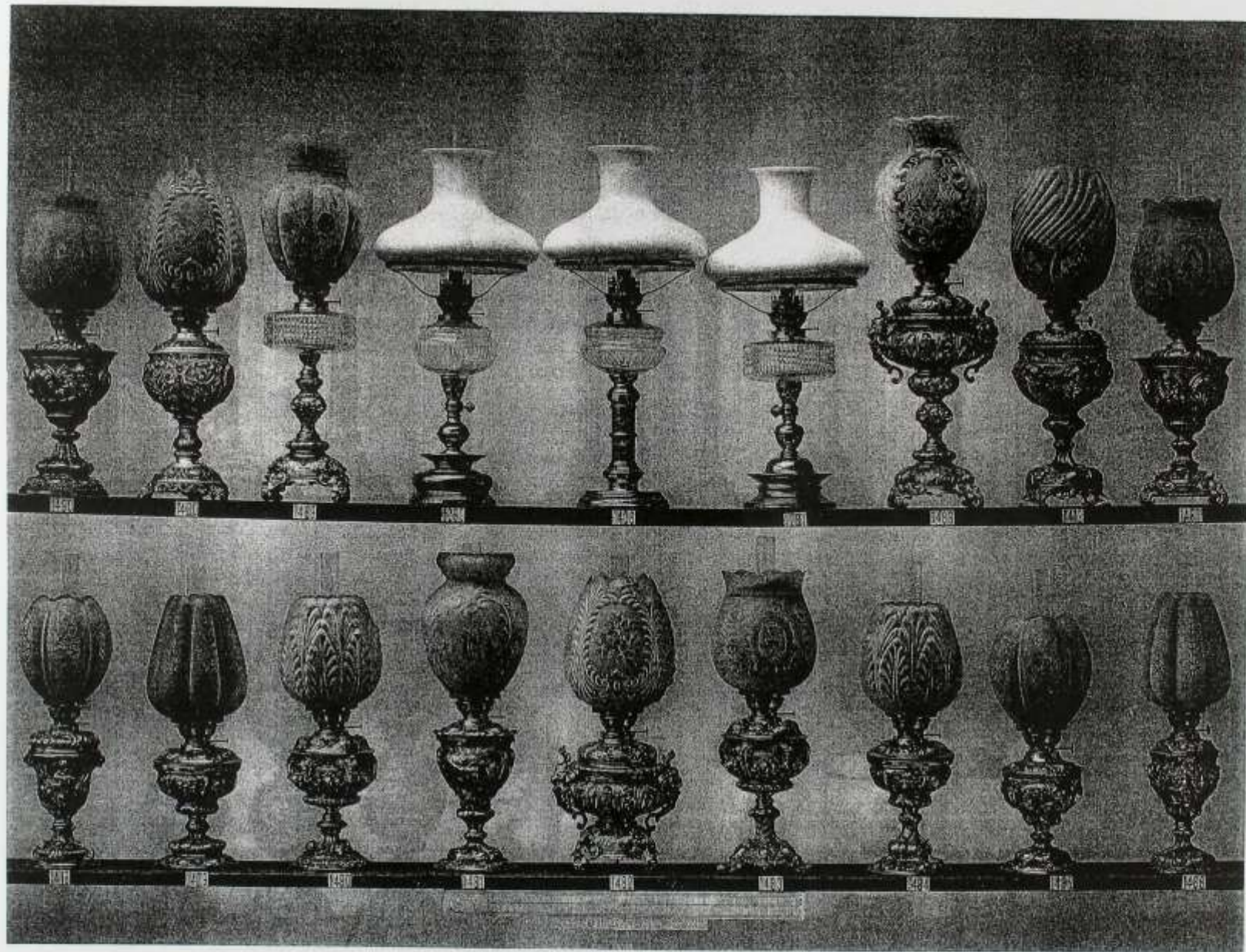


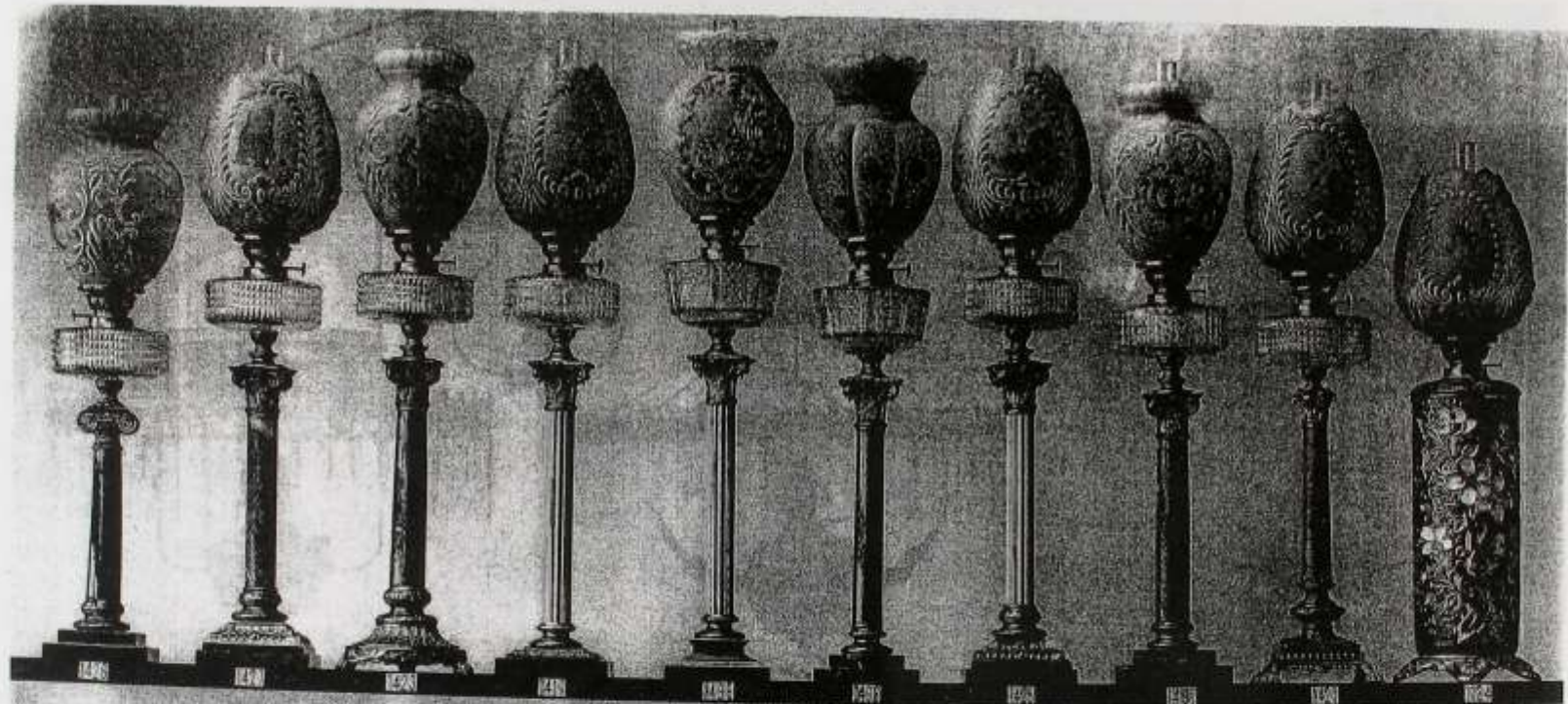
AKTIEBOLAGET ARVID BÖHLMARKS LAMPFABRIK, STOCKHOLM.



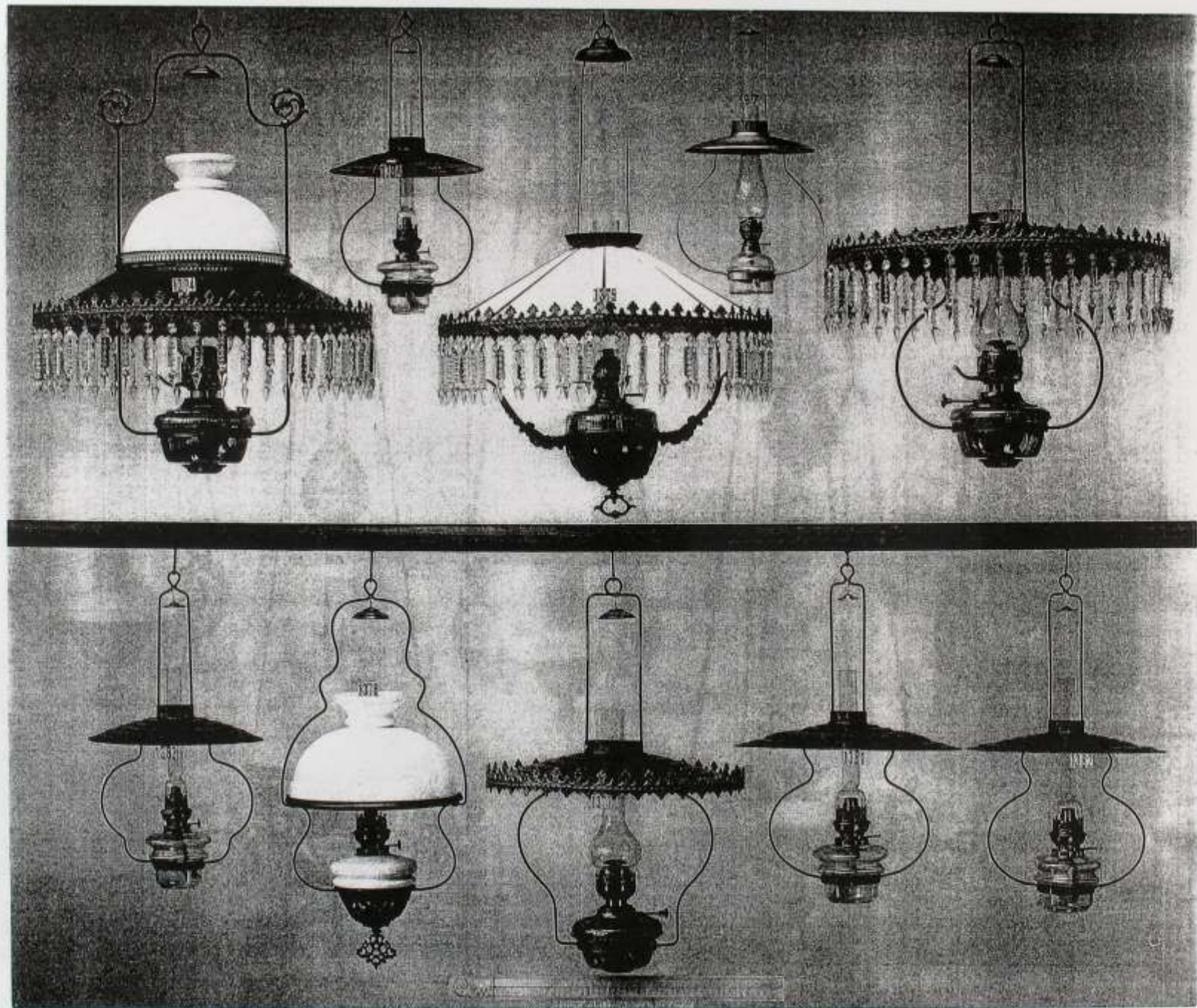
AKTIEBOLAGET ARVID BOHLMARKS LAMPFABRIK, STOCKHOLM.

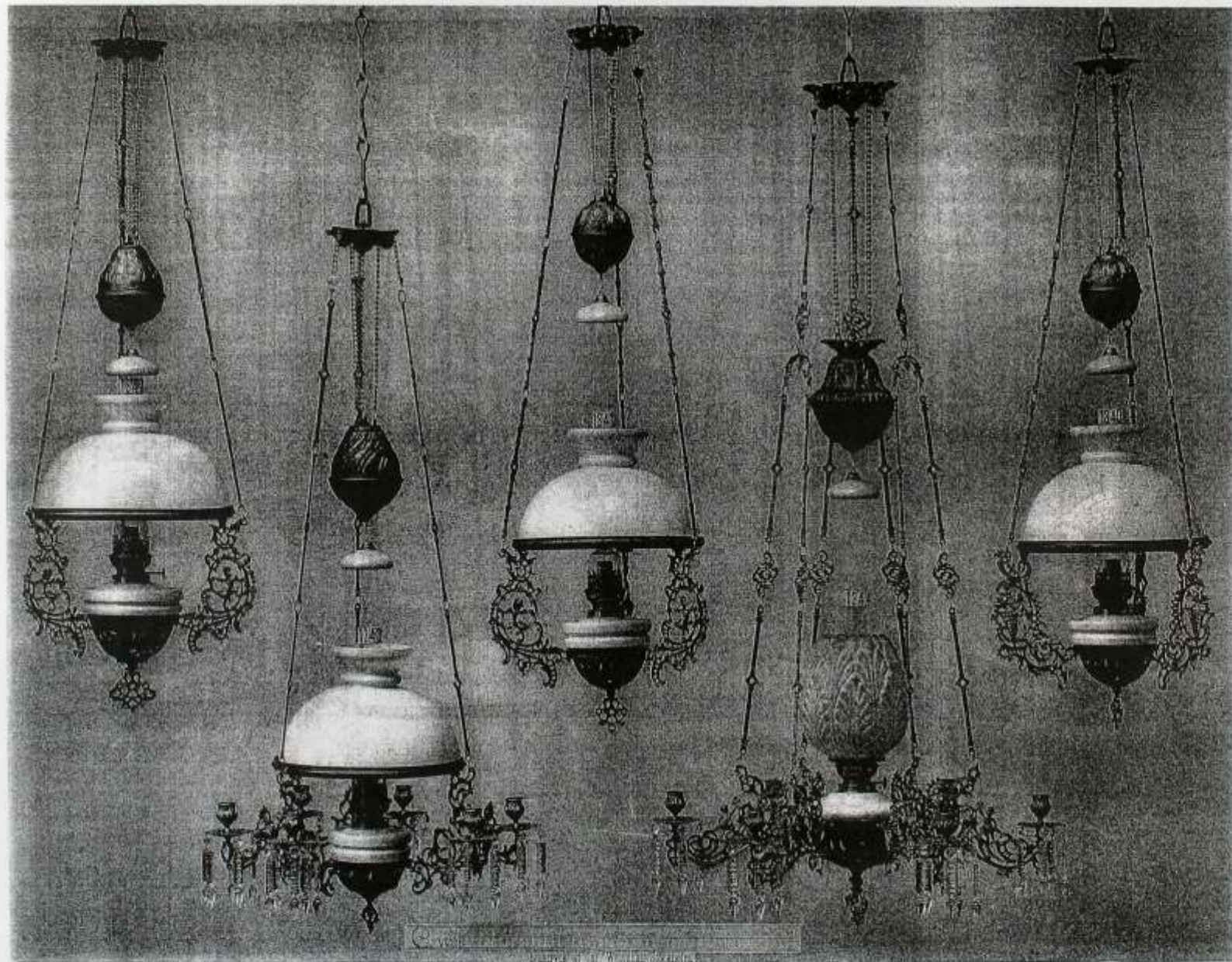


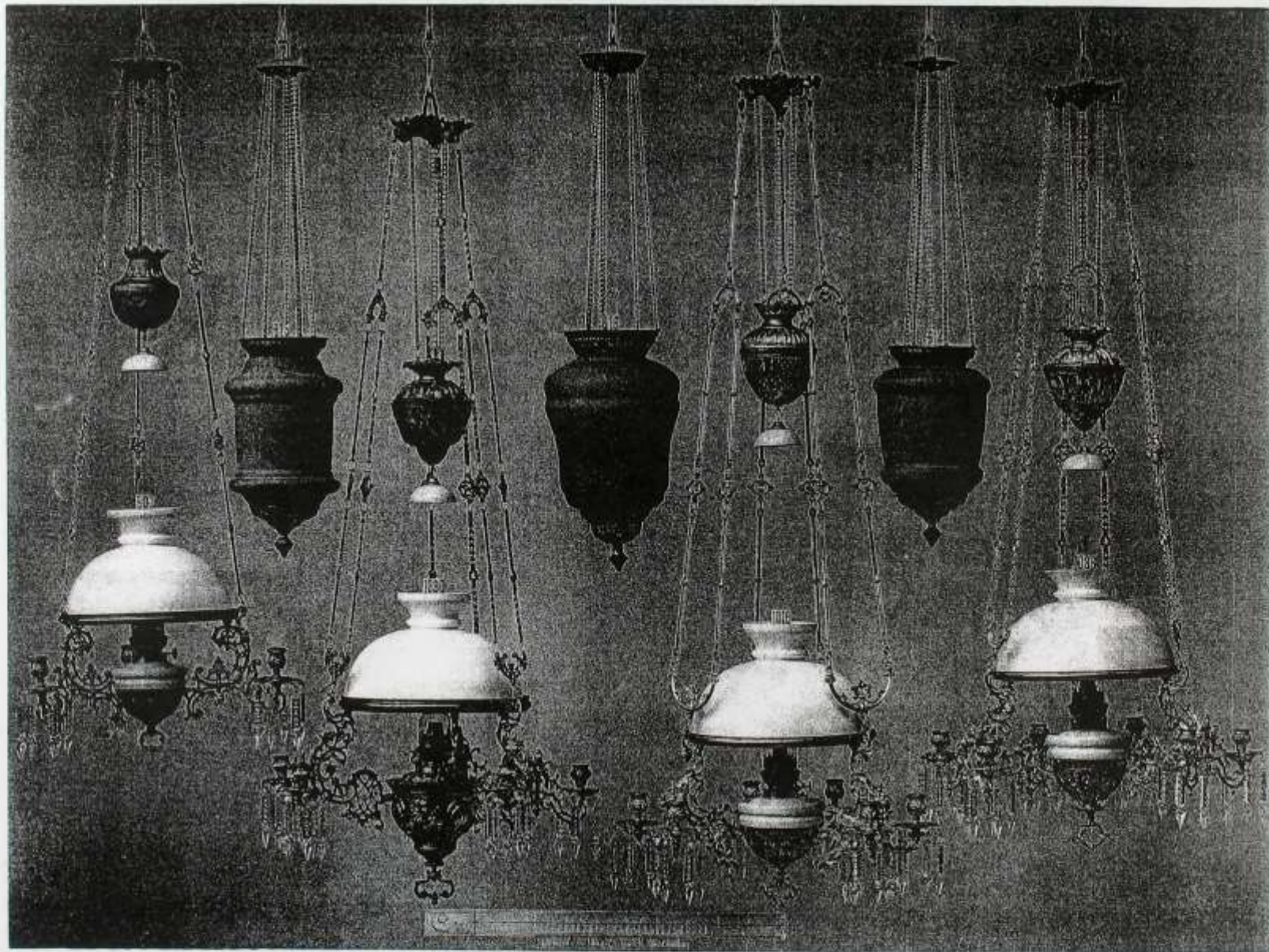




C. W. ...
Courtesy of the ...

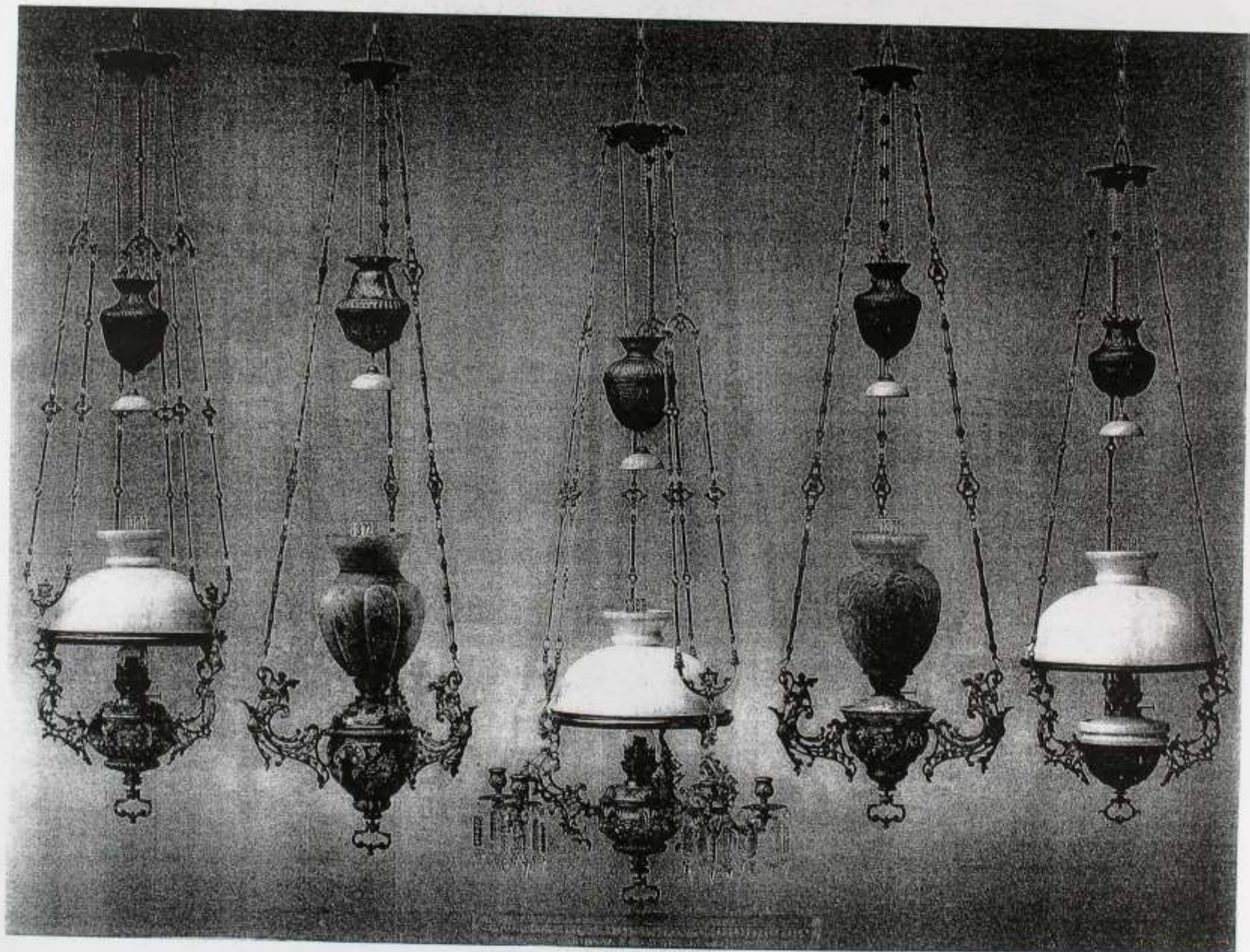


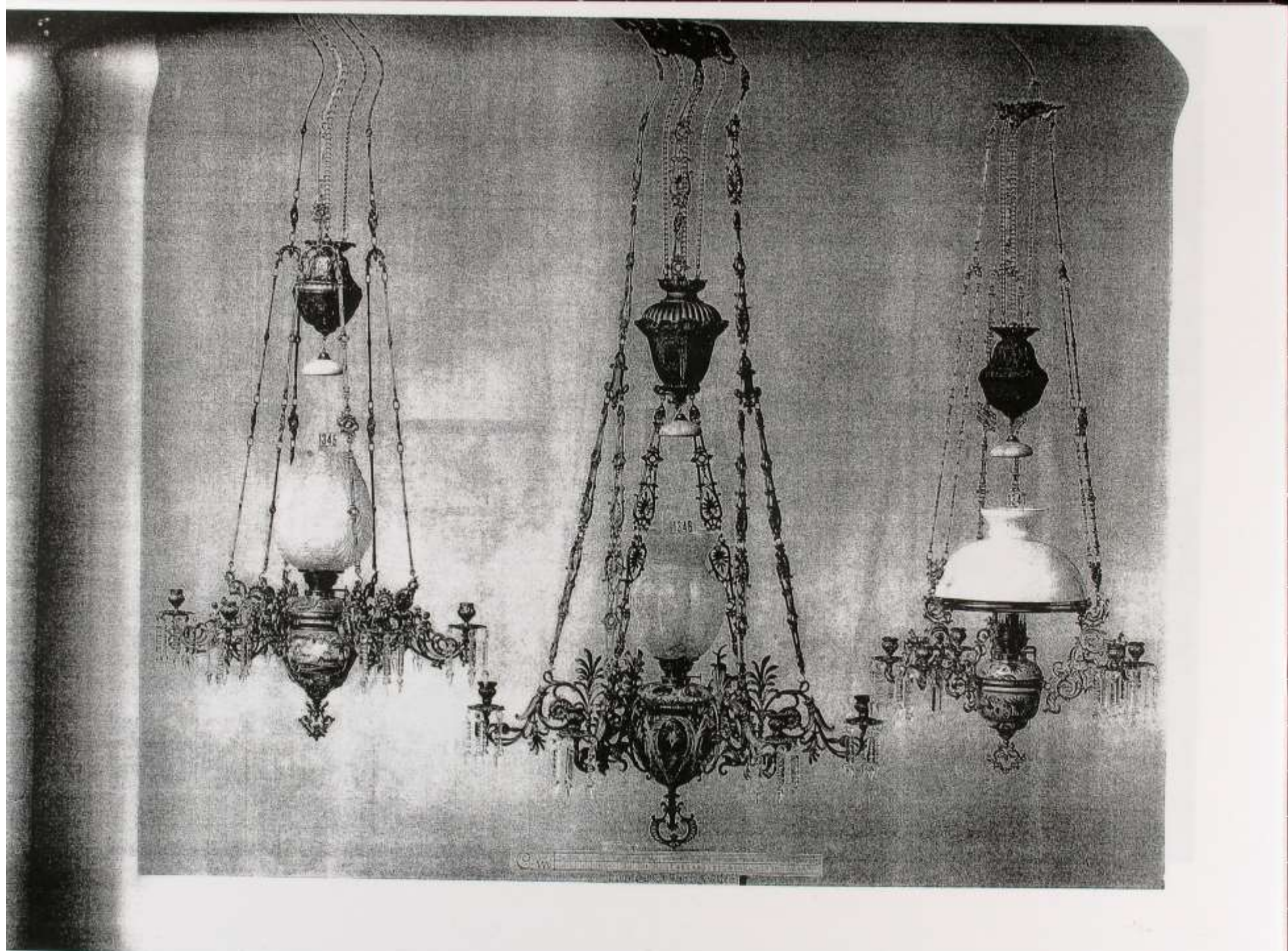




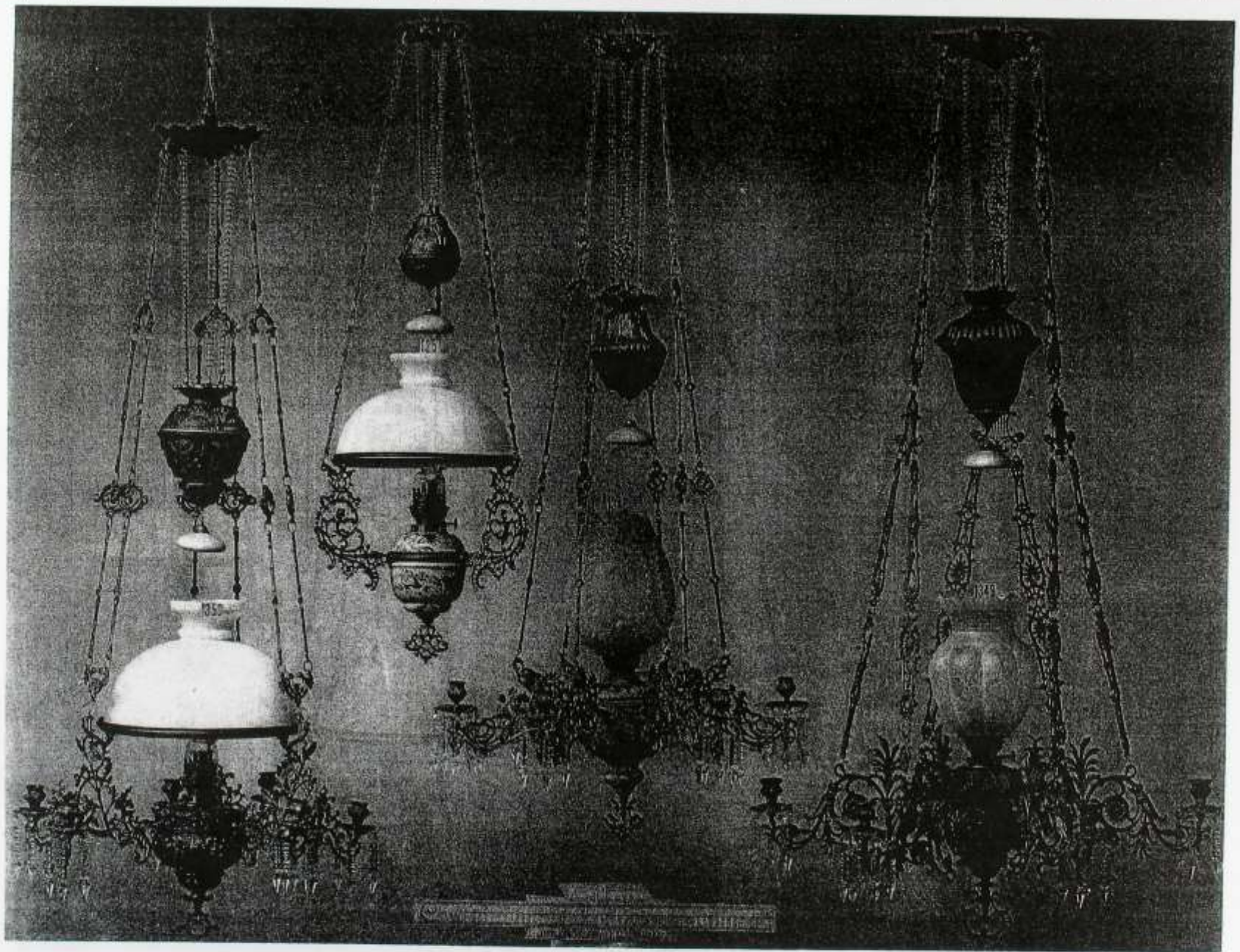


ARTILDOLAGET ARVID BOHLMARKS LAMPFABRIK, STOCKHOLM.

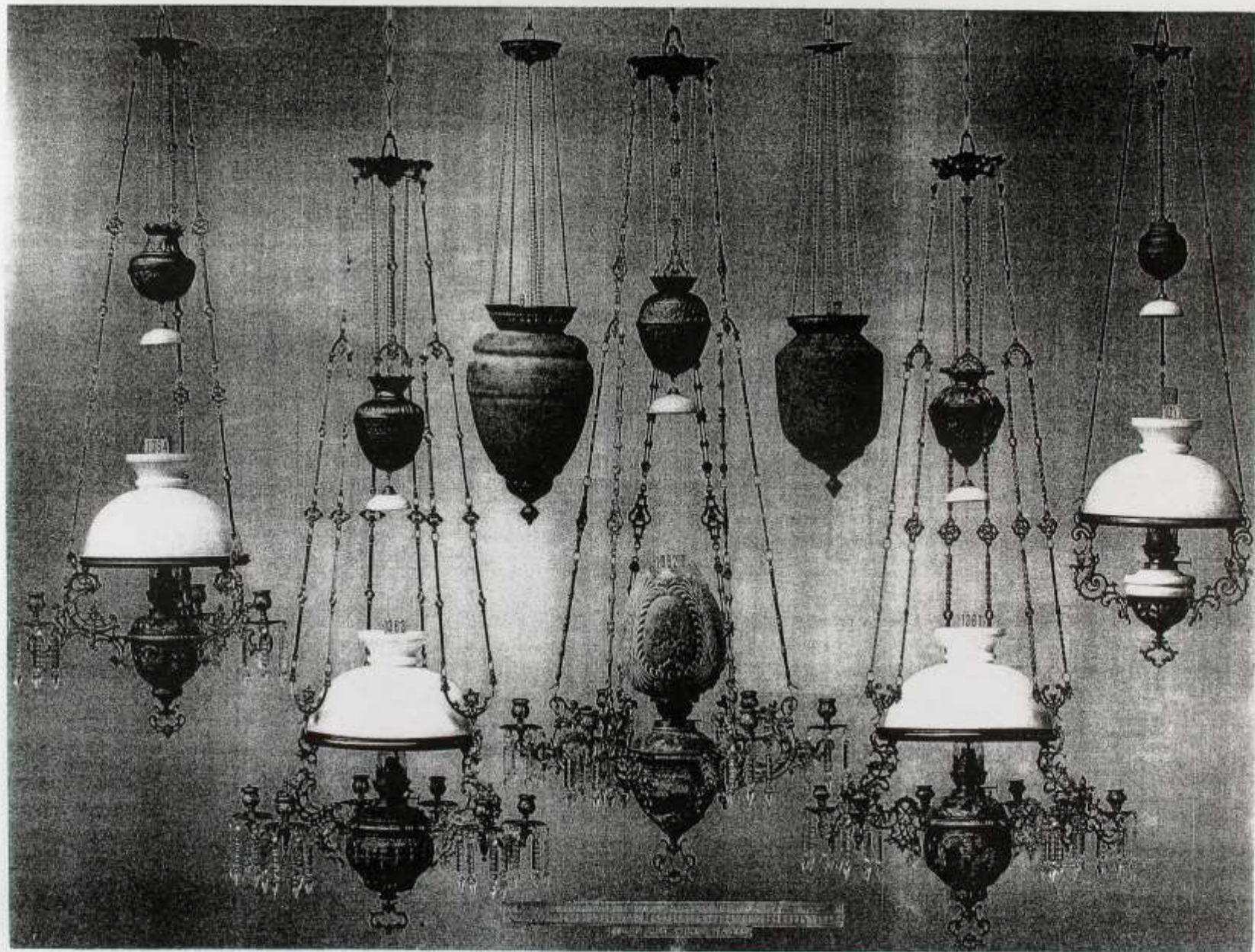


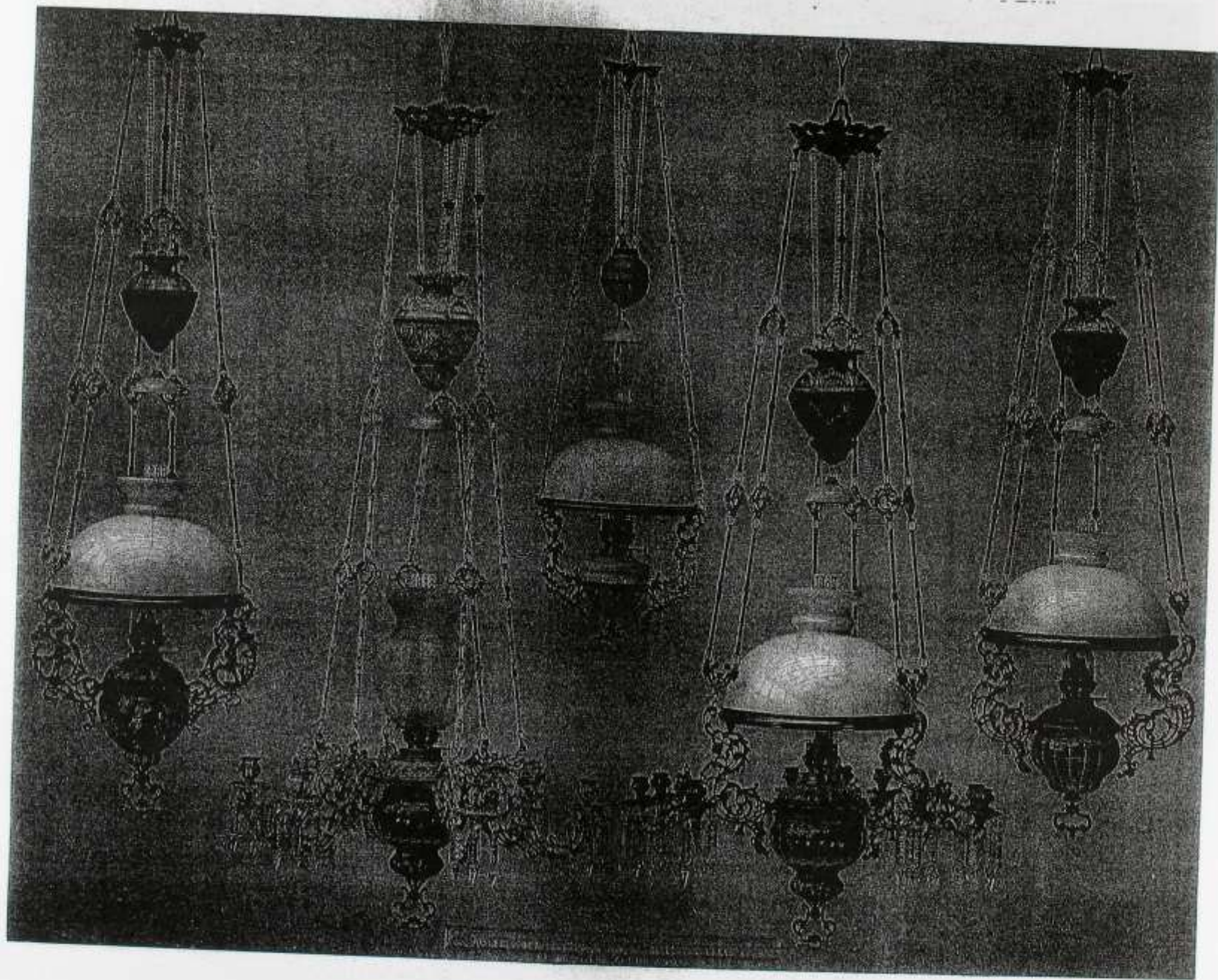


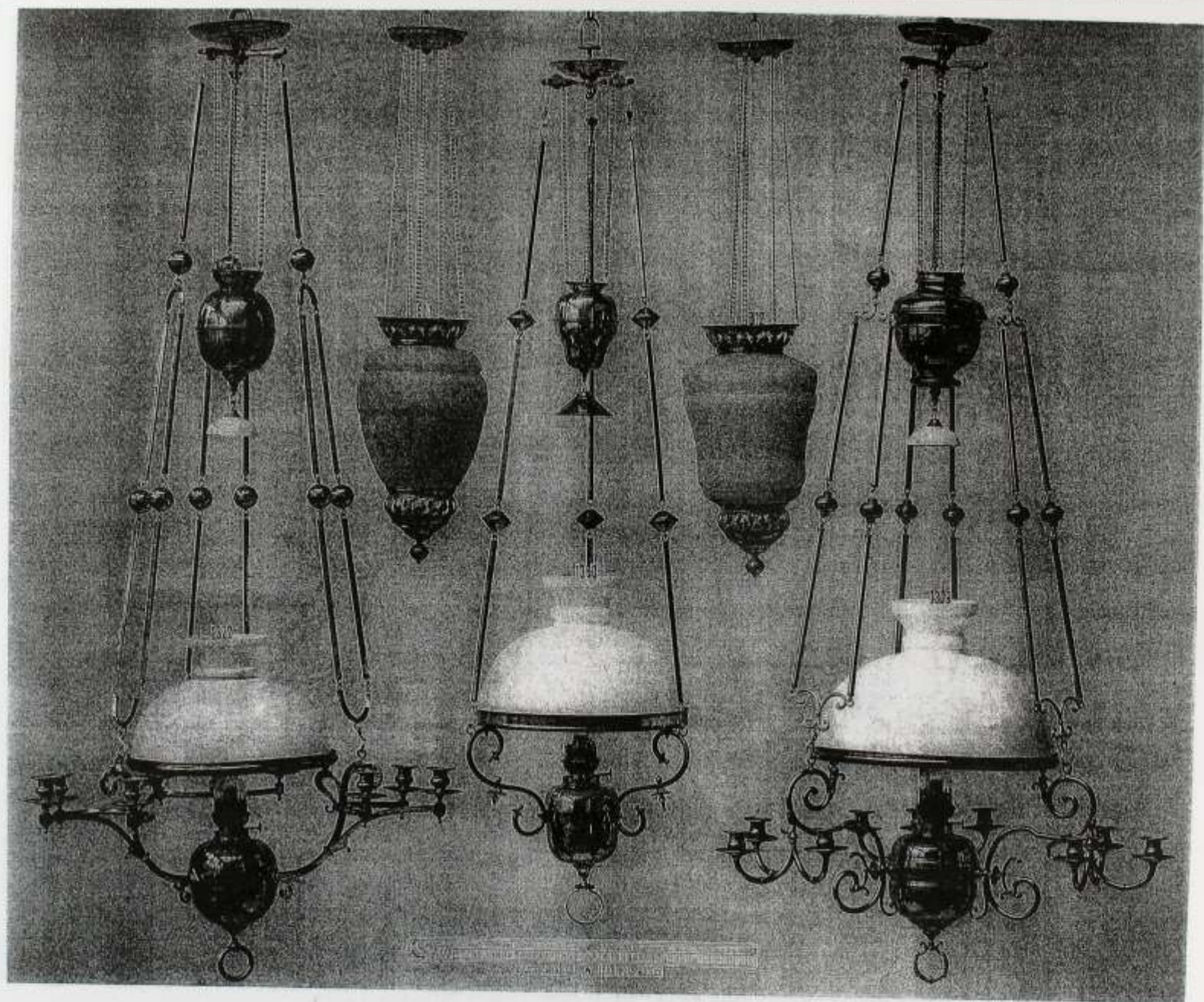
© Wm. H. & Co. 1888



© 1905 THE PATENT LAMP WORKS, NEW YORK, N. Y.

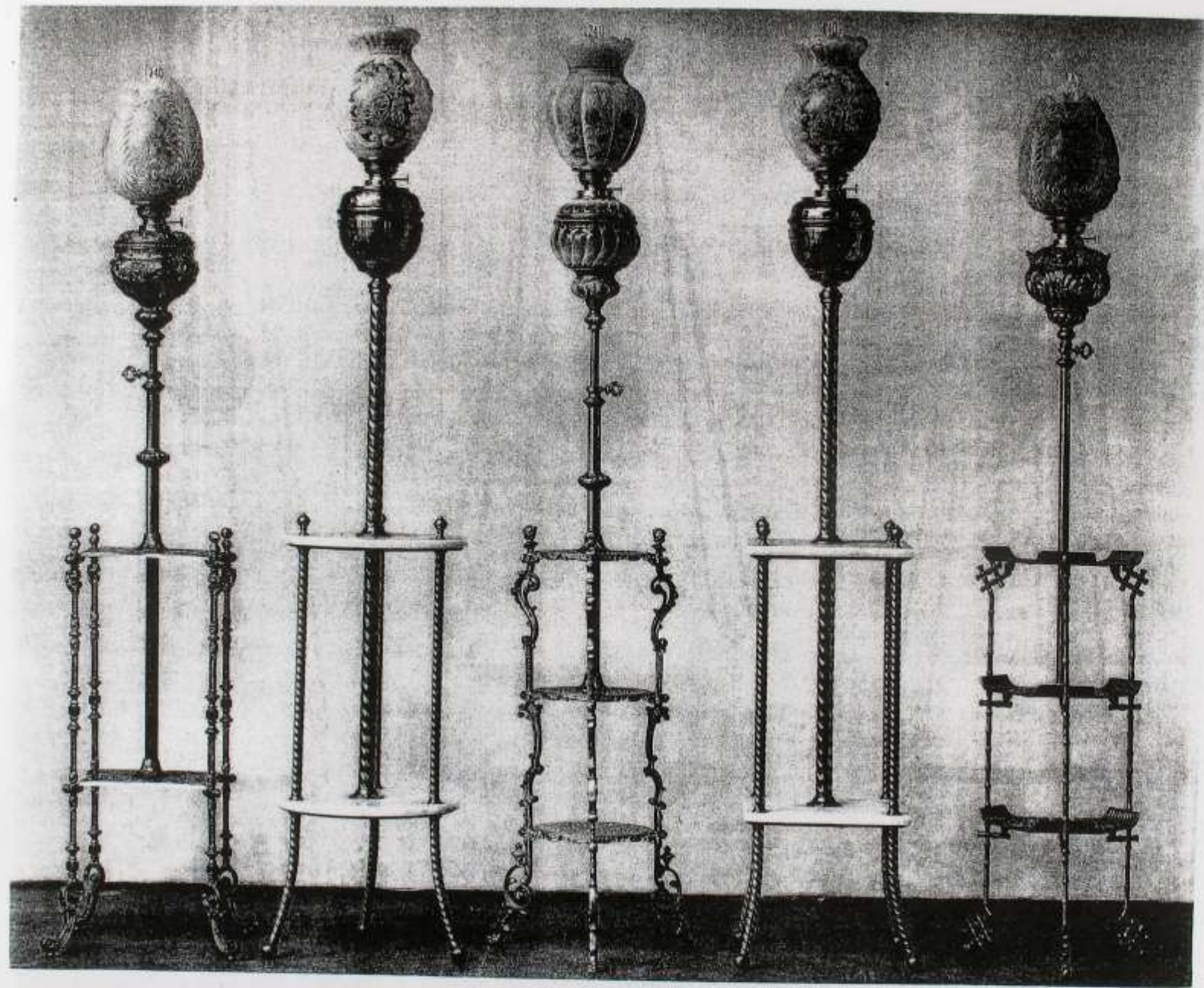


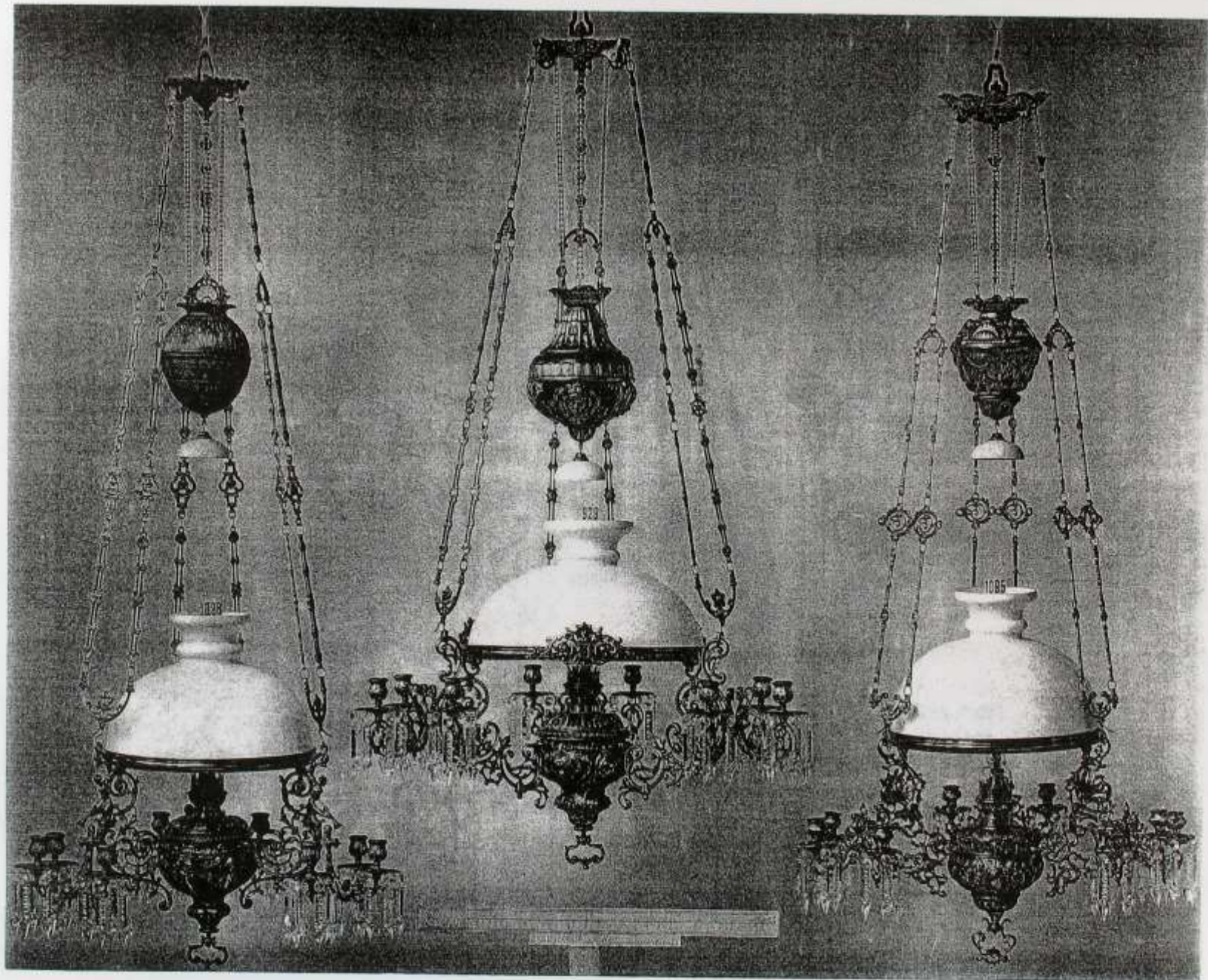






© 1910 THE PATENT LAMP CO. PHILADELPHIA, PA.





...SVEDESKA LAMPFABRIK, STOCKHOLM.

