

ORREFORS

utan tryckår, möjligen 1926

sidor med objekt märkta H 50 – H 201



Skål 4/fat H/50



Bombonjær H/51



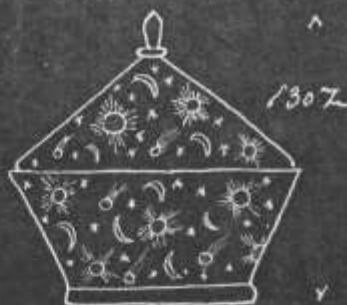
Assiøtter H/52



Drikkeglas H/53



Assiøtter H/54



Bombonjær H/55



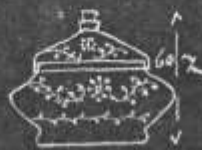
Drikkeglas H/56



Flaon H/57



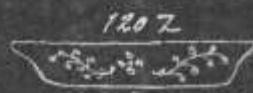
Rudeask H/58



Småask H/59



Kam.læde H/60



Skål/fat H/61



310%

Pokal H/62



195%

185%

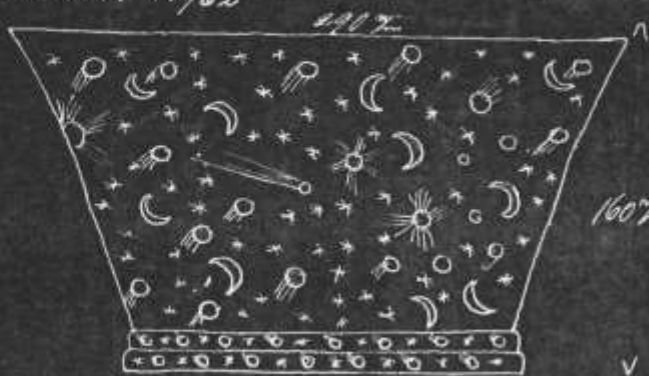
Skål H/63



201%

110%

Skål med far H/64



290%

160%

Skål H/64



270%

Negerhyddan H/65



310%

450%

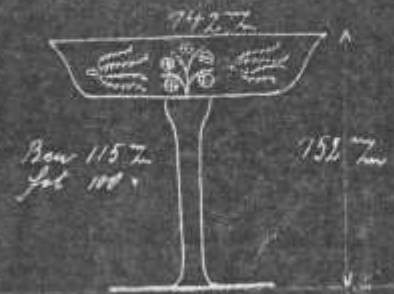
Pokal H/66



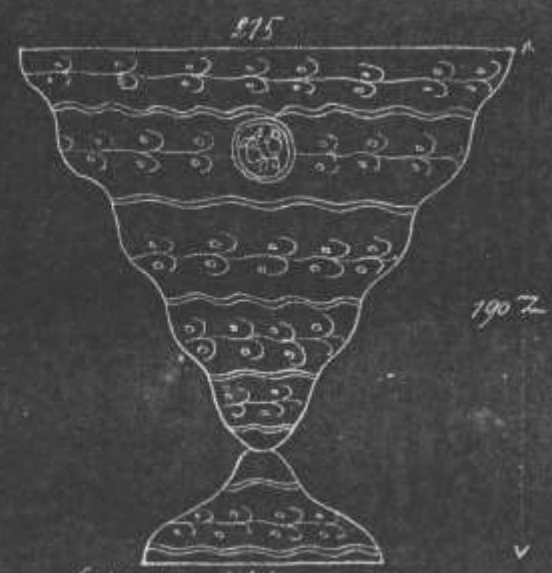
Skål H/68



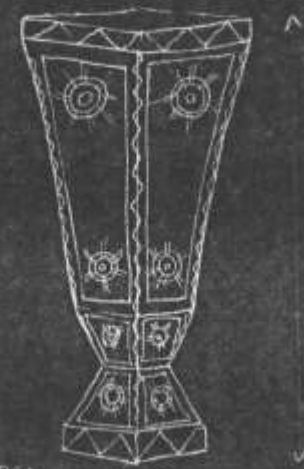
Vas H/69



Skål H/70



Skål H/72



Vas H/71



Vase H/73



Urne H/74



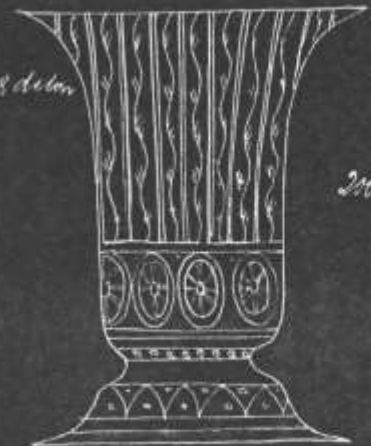
Blomgt H/75



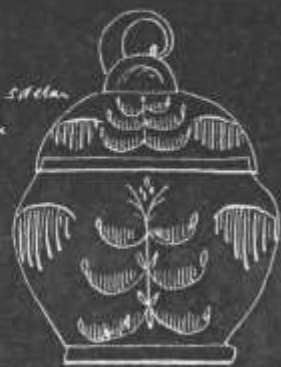
Urne H/76



Bucka H/77



Blomgt H/78



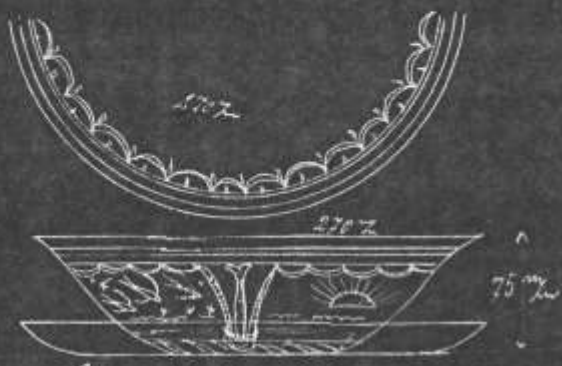
Bombonjia H/79



Pohal H/80



Skal H/81.



Skal / pat H/82



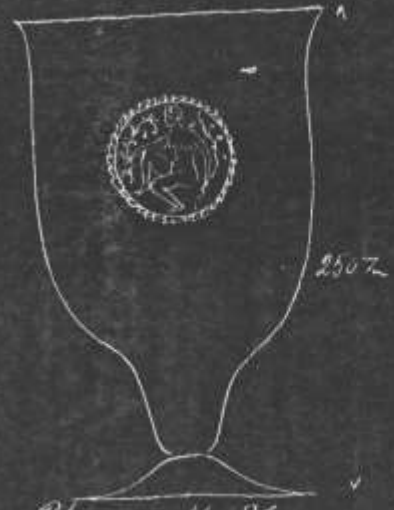
Pokal H/83



Tavica H/84



Tavica H/85



Ubrne H/86.

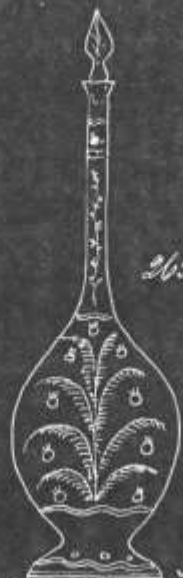


200%



140%

Skål H/87



265%

Karaffa H/88



275%

Bucka H/89



140%



130%

Skål H/90



182%



145%

Skål H/91



152%



145%

Skål H/92



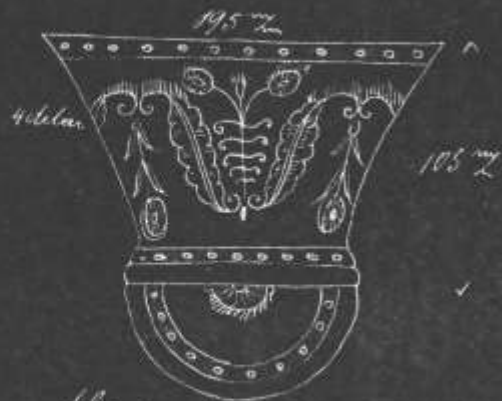
Skjal H/93.



Buck and lock H/94.



Skjal H/95.



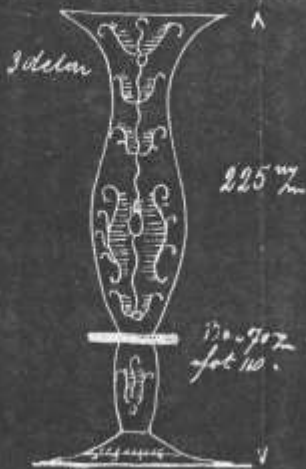
Skjal H/96.



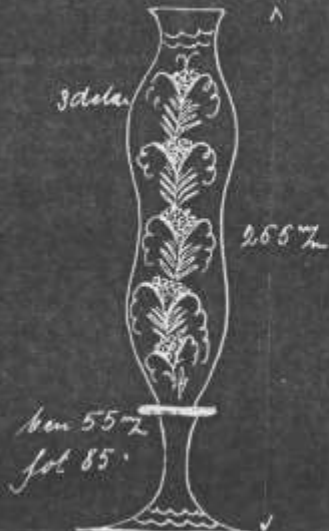
Skjal H/97.



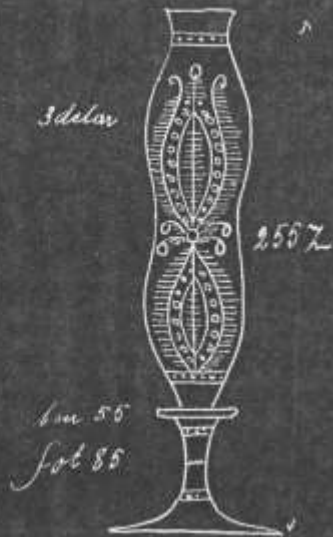
Vas S6/98.



Vas H/99



Vas H/100



Vas H/101



Bränninsfl H/103



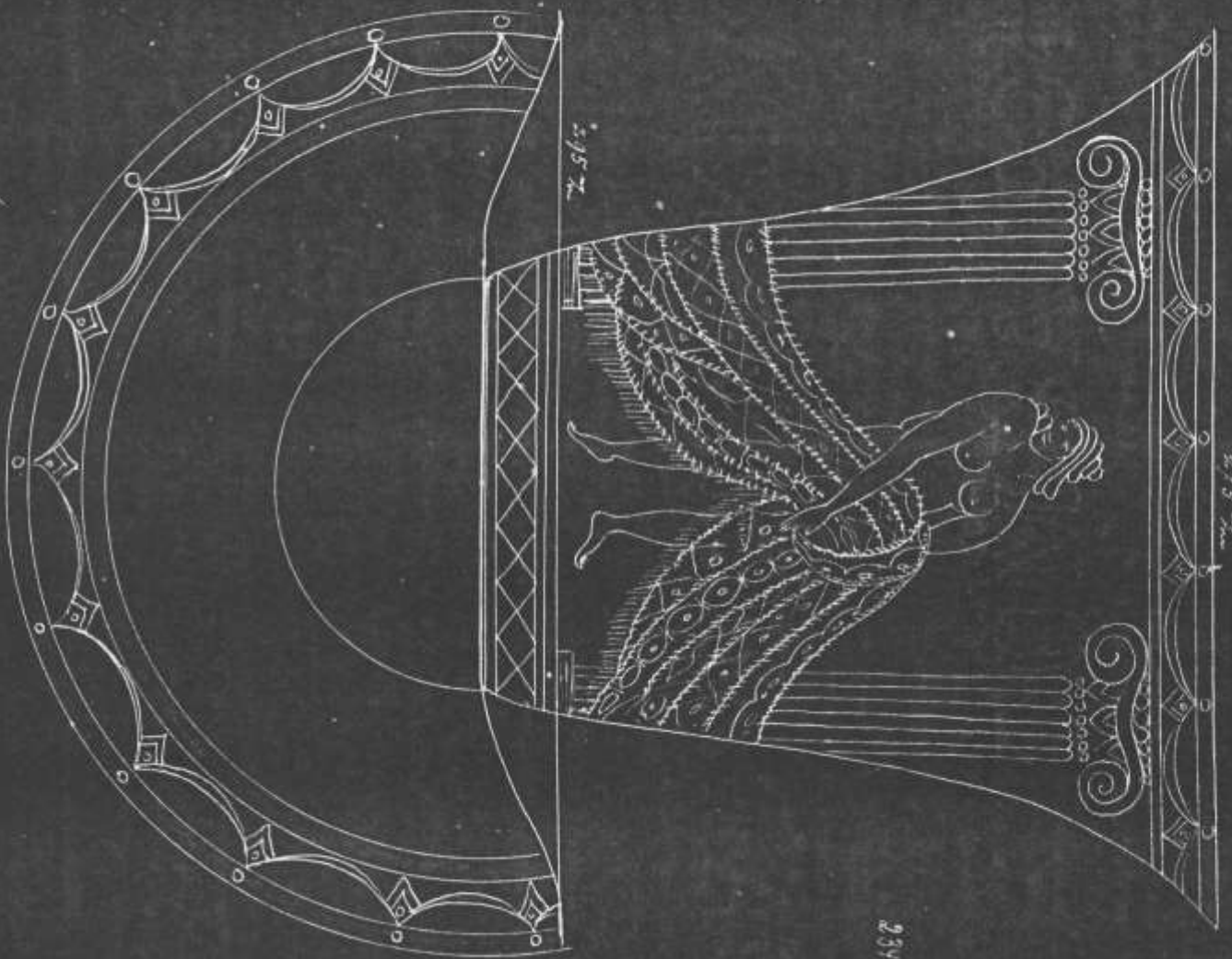
Bränninsfl H/102



Bricka H/104



Bricka H/105



Shail and part H 706

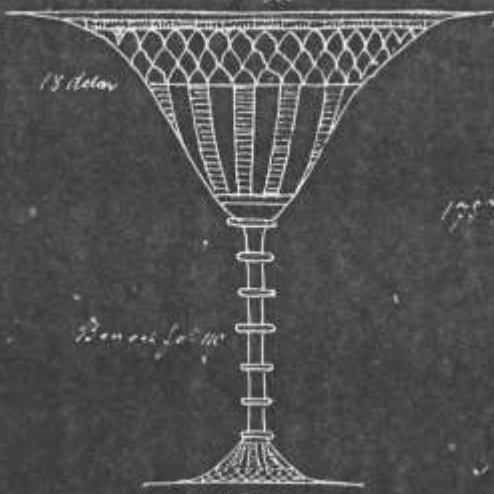
2.34 m

2.95 m

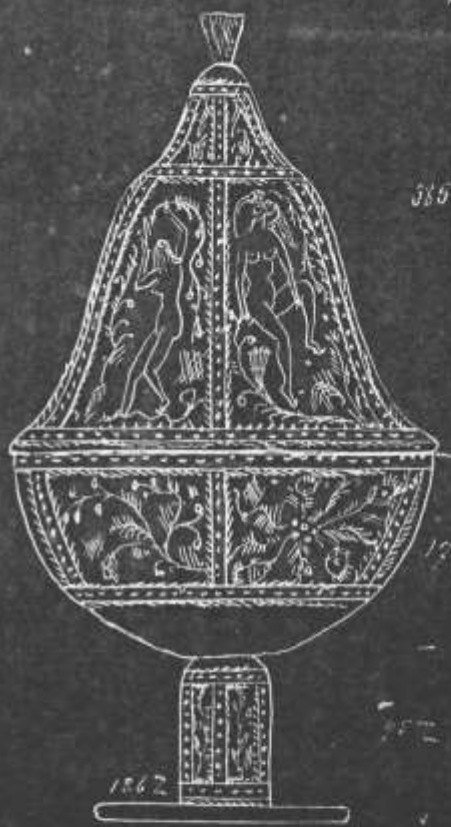
2.75 m



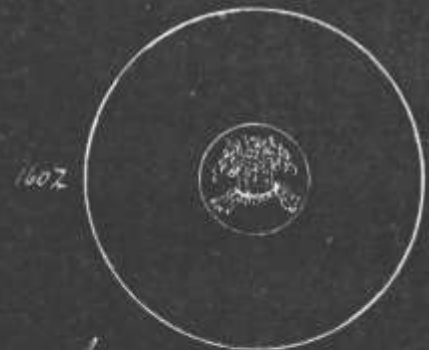
Liljekrusaff H. 1107



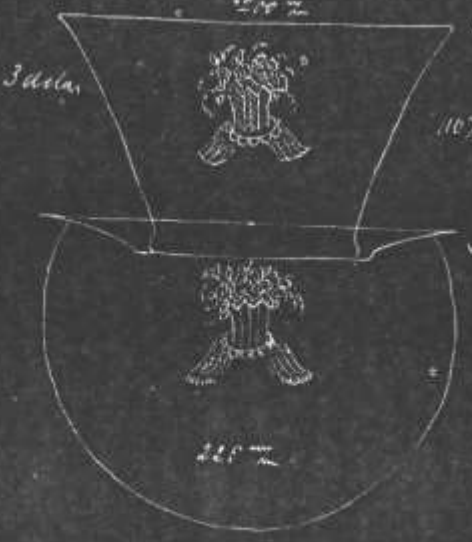
Skål H. 1108



Skål H. 1109



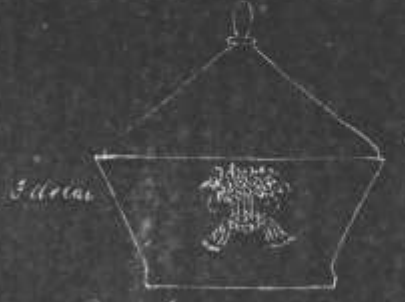
Assiette H. 1110



Skål m. fäl. H. 1113



Dricksyl H. 1111



Bentongär H. 1112



Urn H/114

208Z



Bianrus H/115

200Z



Burk H/116

208Z



Breopness H/118



Breopness H/119

225Z



Breopres H/119



Breopness H/120

510 ^{mm} *fin*



11:1, 42.



11:3, 22.



11:5, 42.



11:6, 42.



11:3, 42.



11:2, 42.



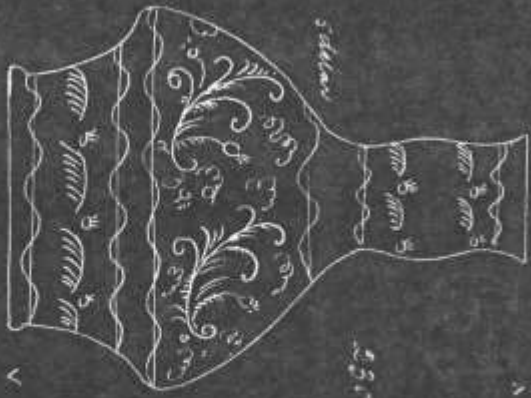
11:4, 42.



11:4, 32.

Lampskupa H/121 14

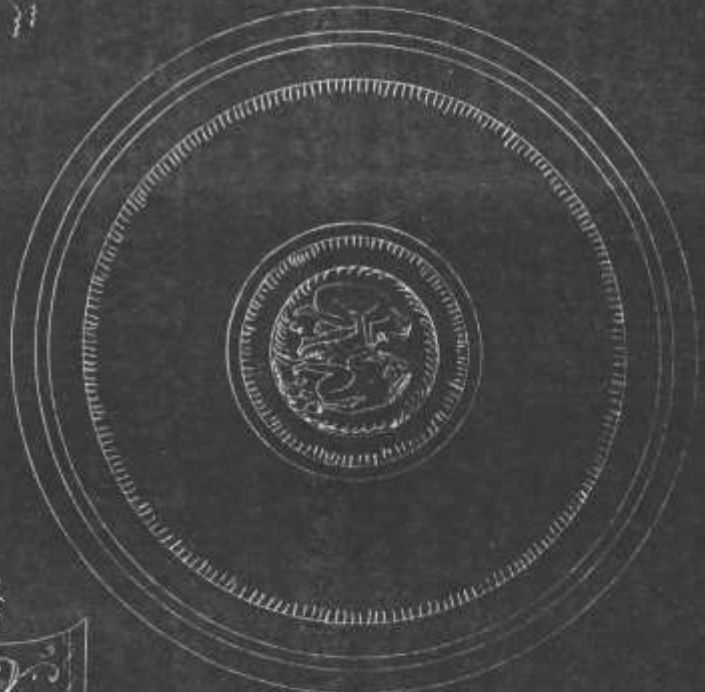
Kolmei Tuulborn Sittalm



Stilben

2607

Waldenkrampf H/123



Buicka H/122

2607



Stilben

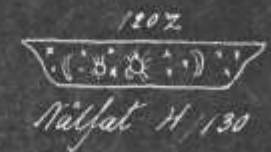
Stuchepghus H/124



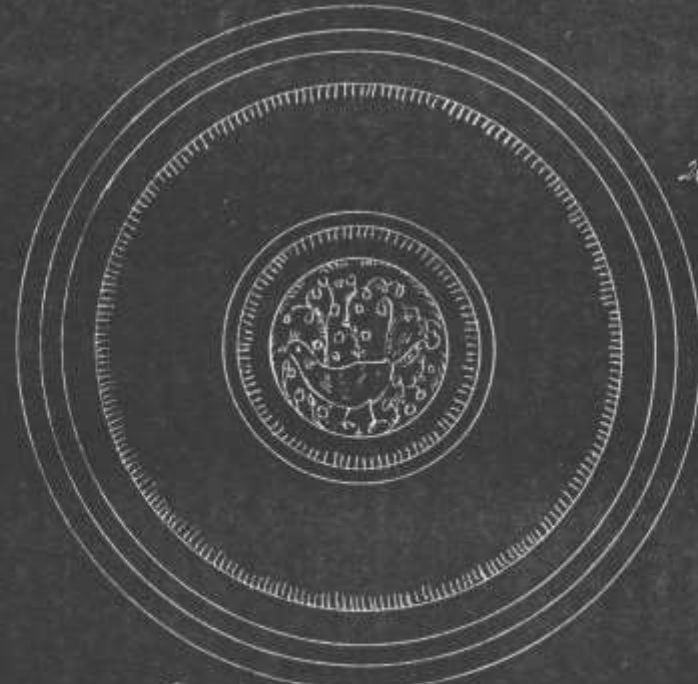
Buicka H/125

2607

14.

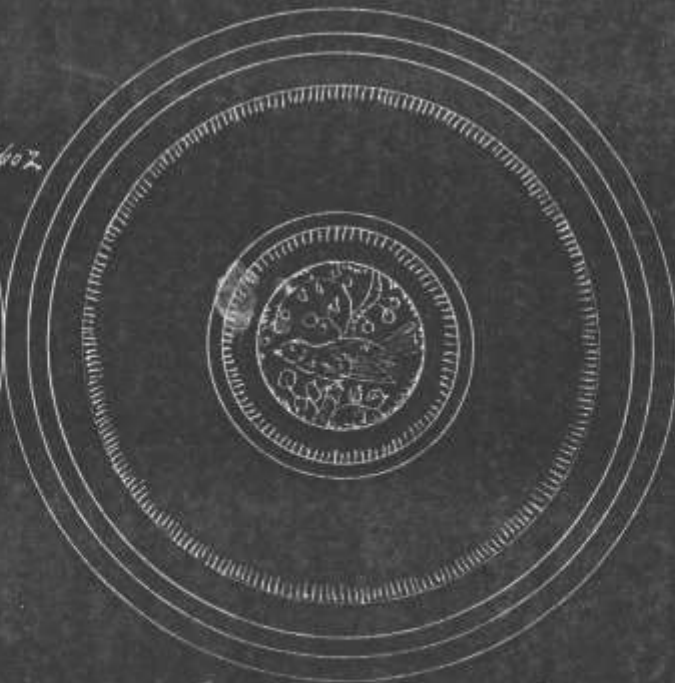


200Z



Beicka H/131 21

260Z



Beicka H/132 121

7.10.10



Urne H/133 130

7.10.10



Buck H/134 121

7.10.10



135 Z

Buck H/135 20



Skål H/136



130 Z

Urne med skål H/137



170 Z



70 Z

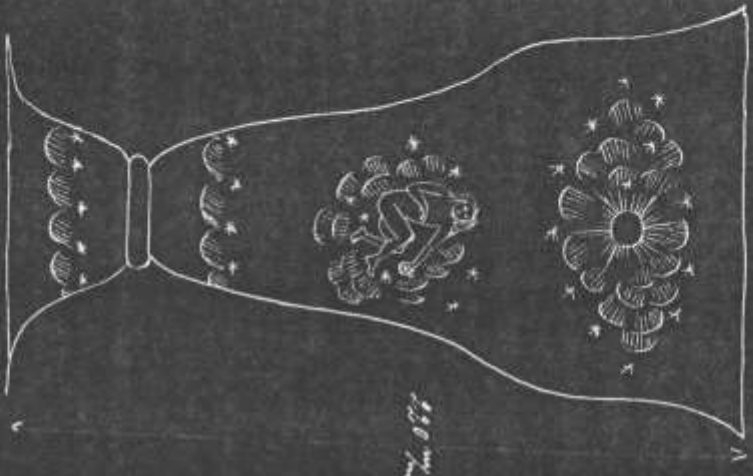
Skål med fat C/140



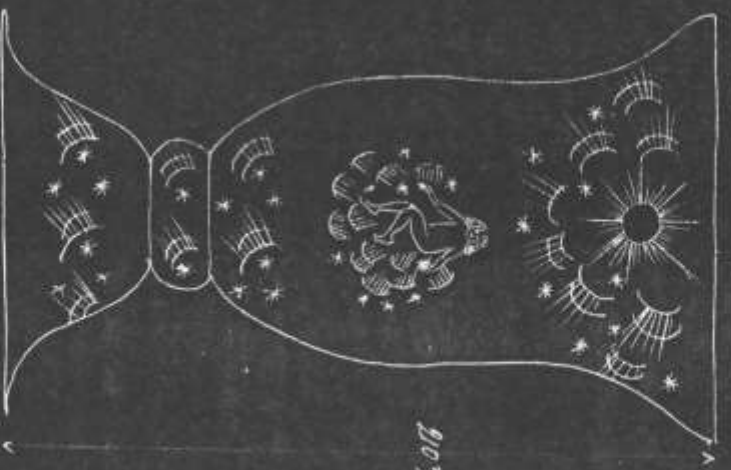
Skid H/138 "



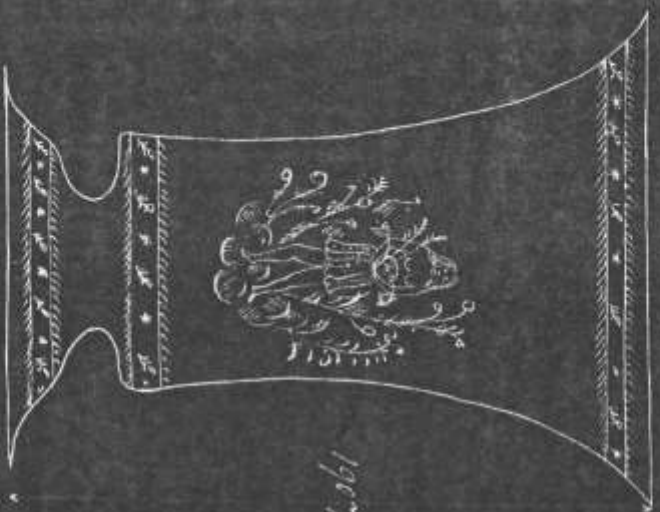
Skid H/139



Skid H/141 130



Skid H/142



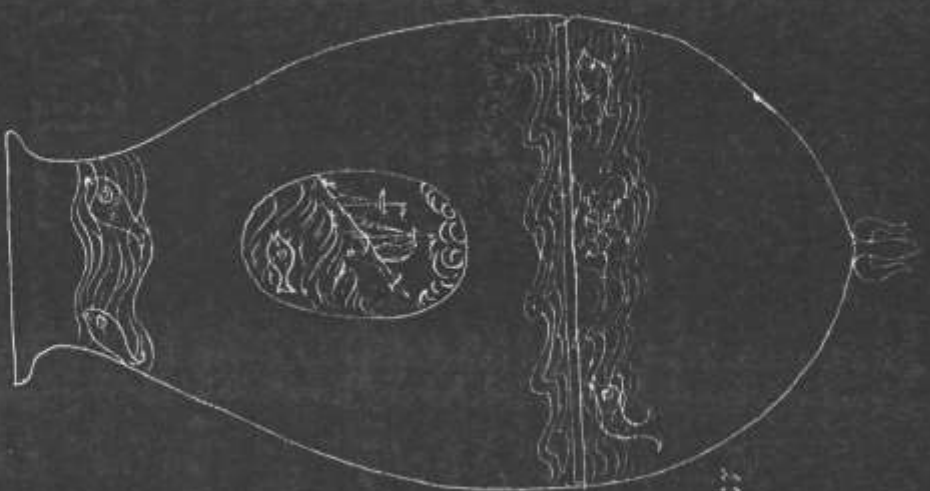
1907m

Olme H/143 s.



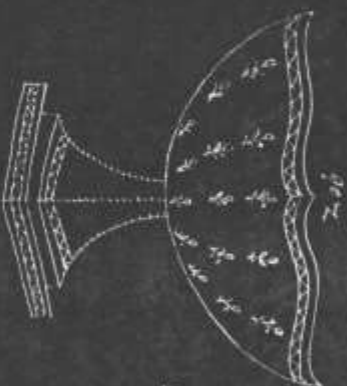
1857m

Olme H/145 m.



1897m

Olme with bird H/144 s.



1897m

Olme H/146 m.



Skål H/1947 120

150



Småskål H/1948 25



Skål H/1950 25

80



Skål - fat H/1949 120

250

120



360Z

150Z

66-104Z

Bonal H/151¹⁰⁰



300Z

Vincennes H/162¹⁰⁰

Cognac H/163¹²⁰



66-104Z



Bugac H/154



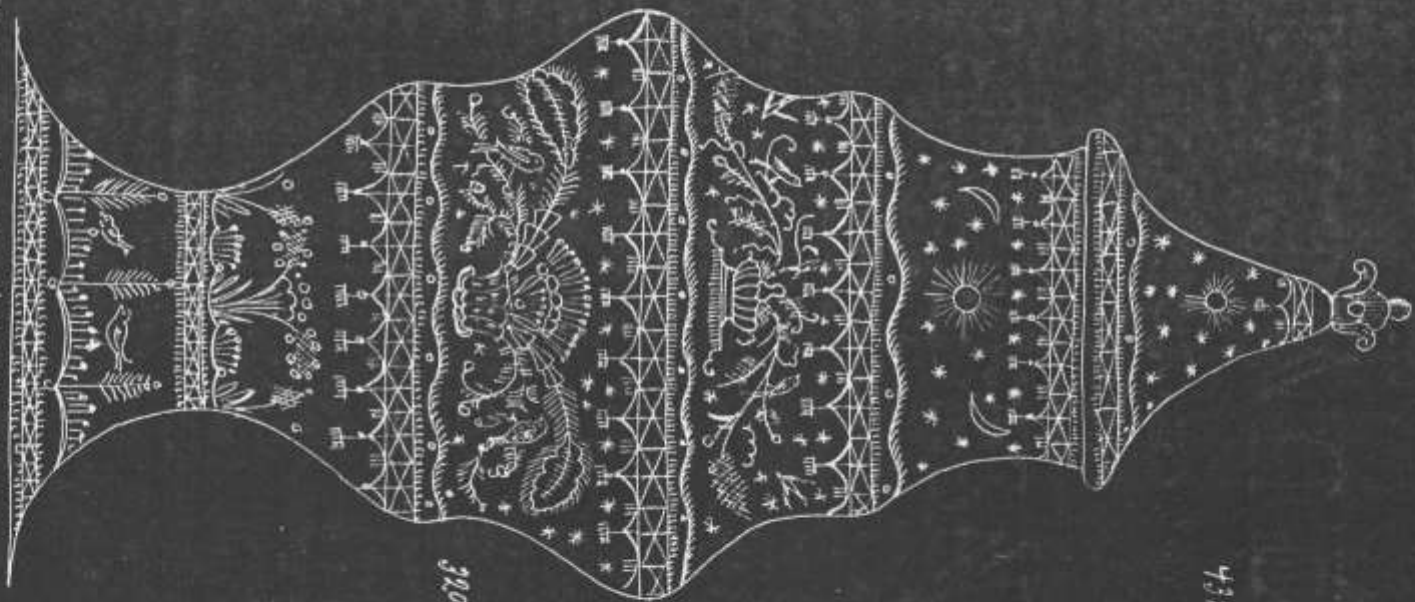
166Z

Asielle H/155¹²⁰



Urne H/156¹⁰⁰

Stamens in lock, H157 120



390 X

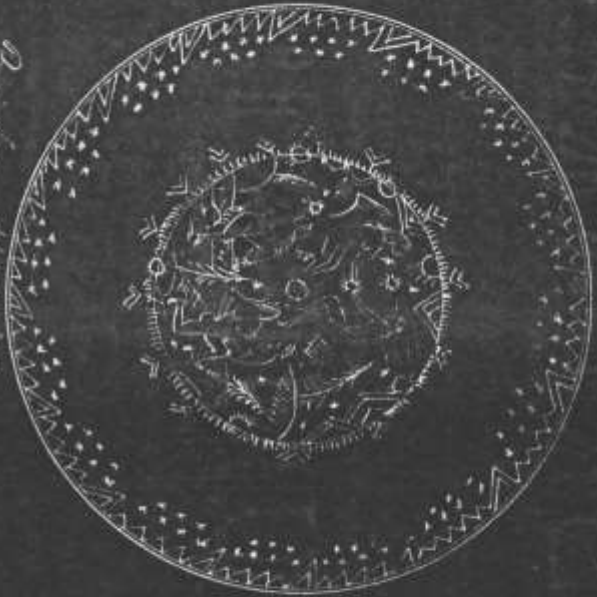
435 m

Bucha H 159



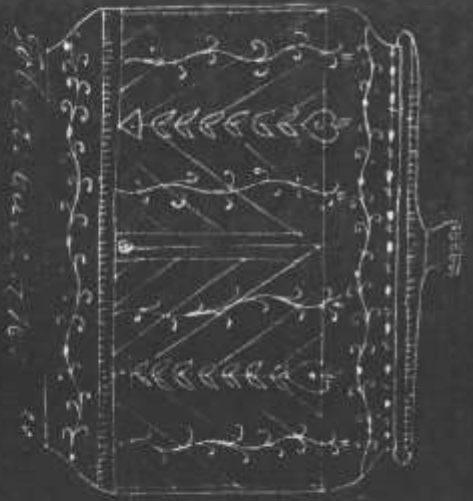
159

Bucha H 158



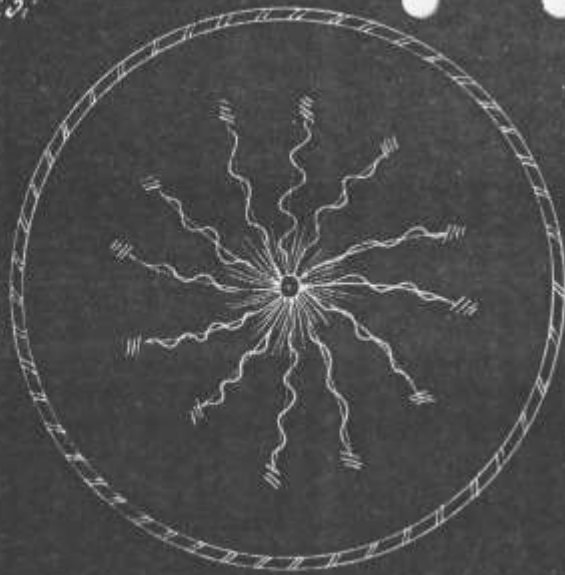


Perseus H. no. 20

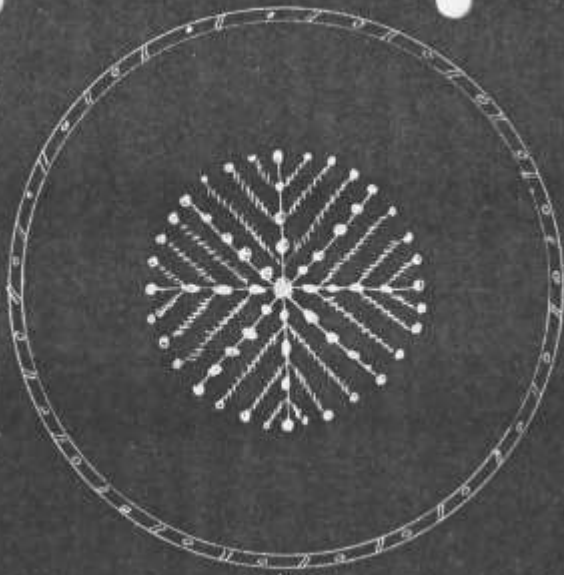


20

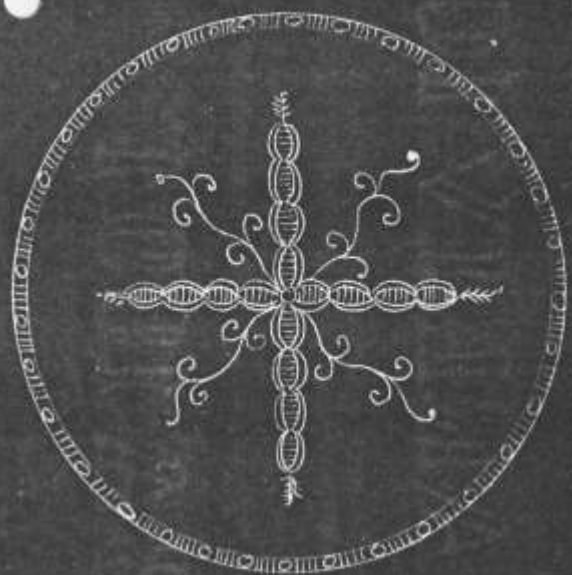
20



H/162

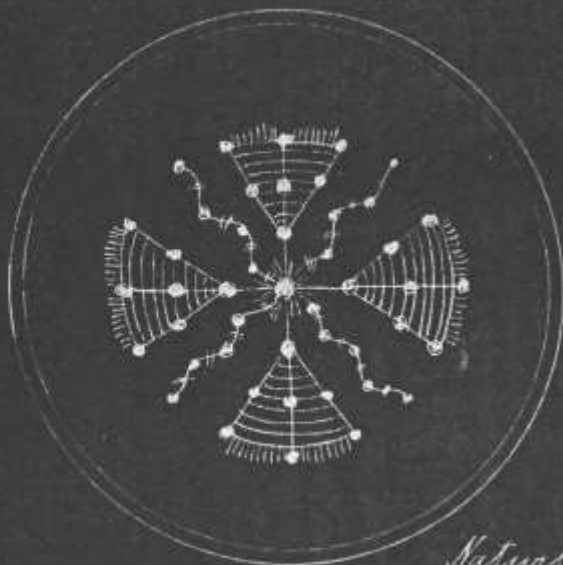


H/163



H/164

Resk = koppar.



H/165

Naturlig



H/166

storlek.



H/167



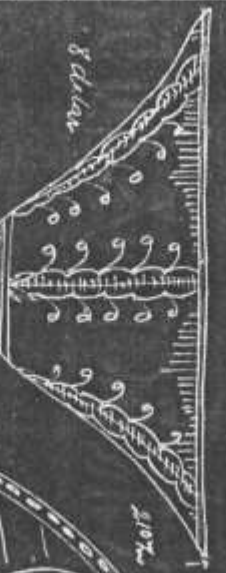
852



2162

Askeby H/168 "

Björka H/169 "



Särlan

2102

Åsarna H/170 "

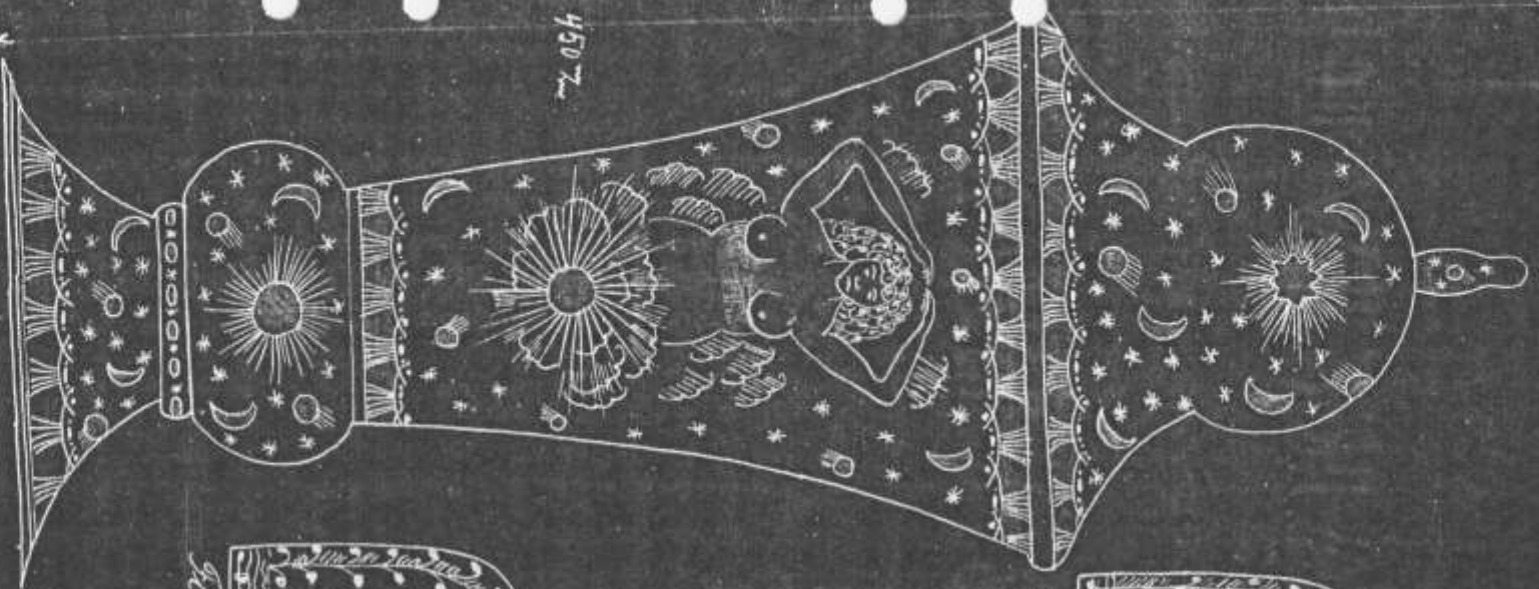


Åsarna H/170 "



2102

H/171 "



450 cm

Katal H/192



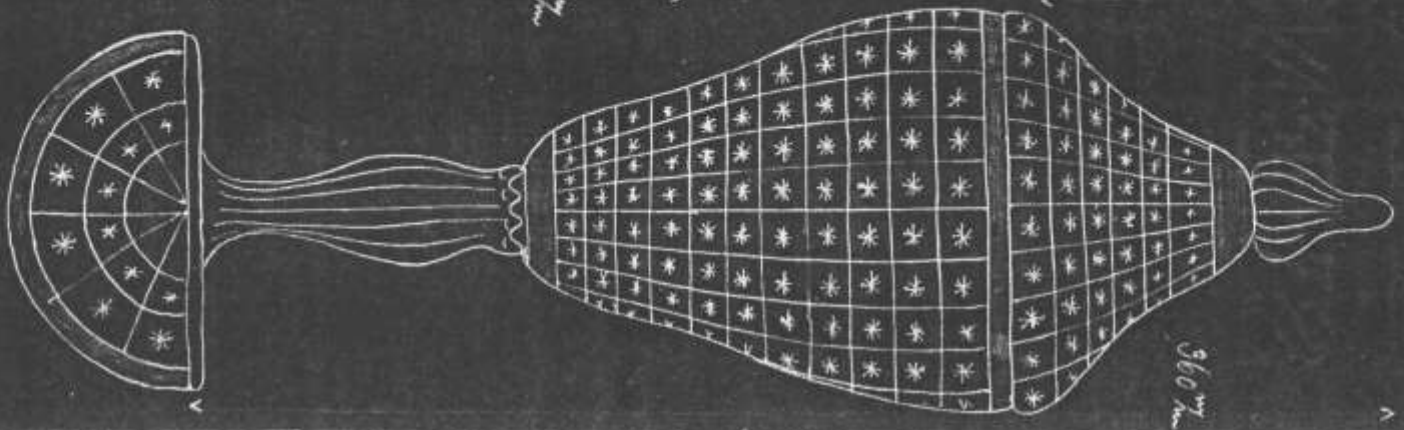
150 cm

Katal H/193



150 cm

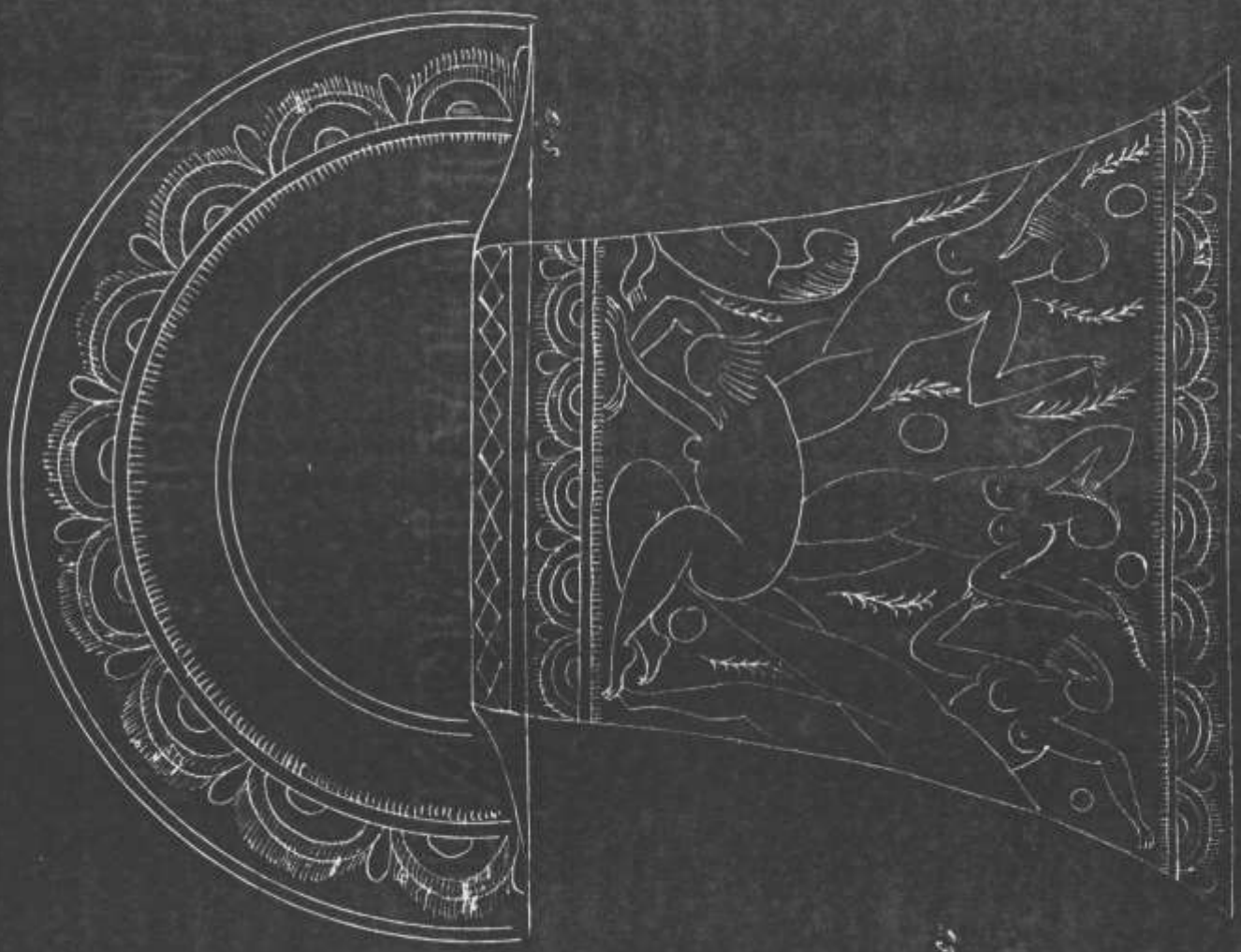
Katal H/194



360 cm

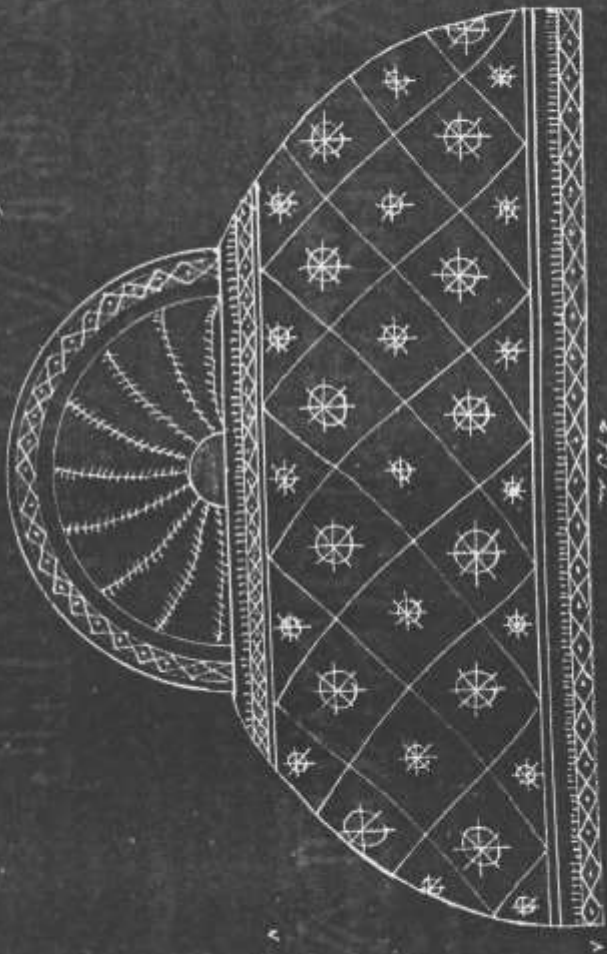
Katal H/195

Steel H, 776 130



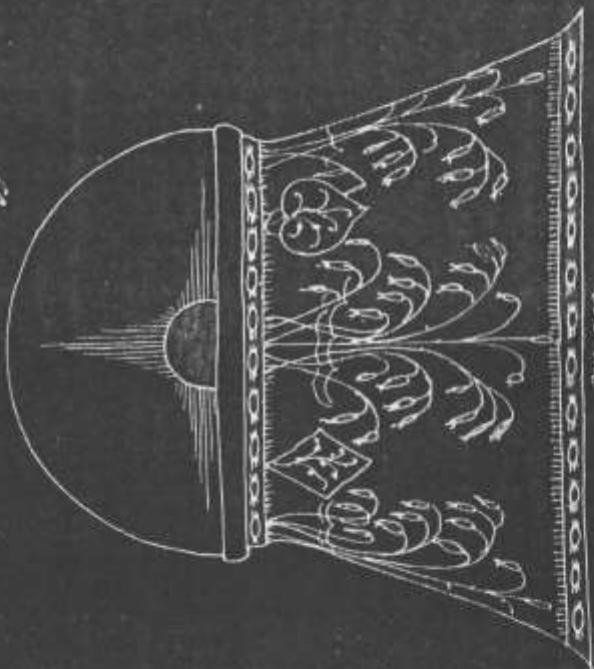
295

295



475

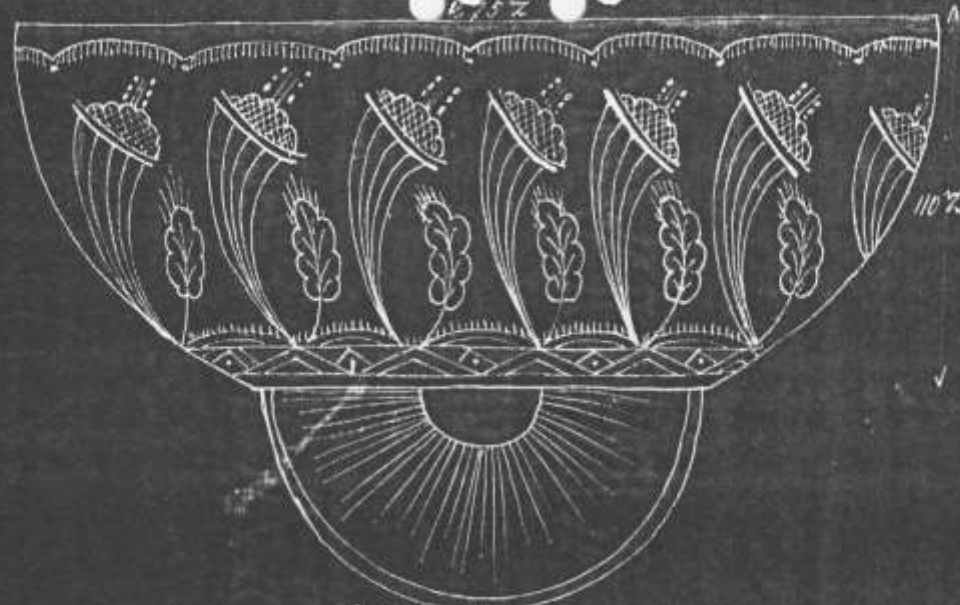
Mail H/1779 120



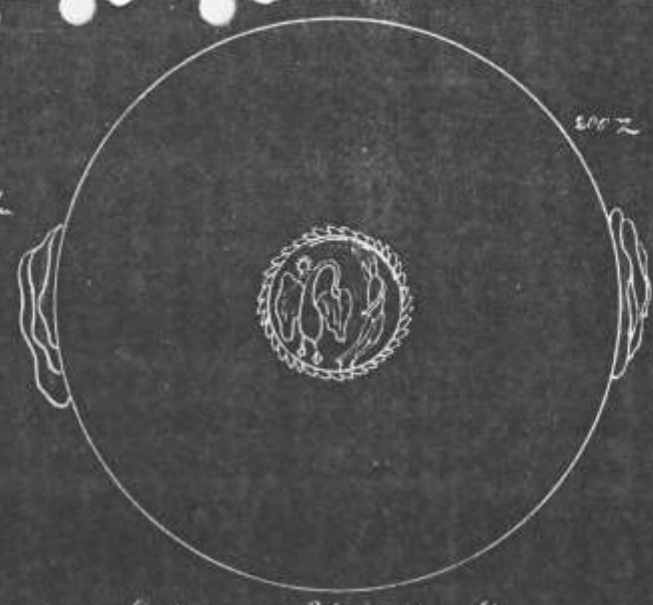
200

Mail H/1778 120

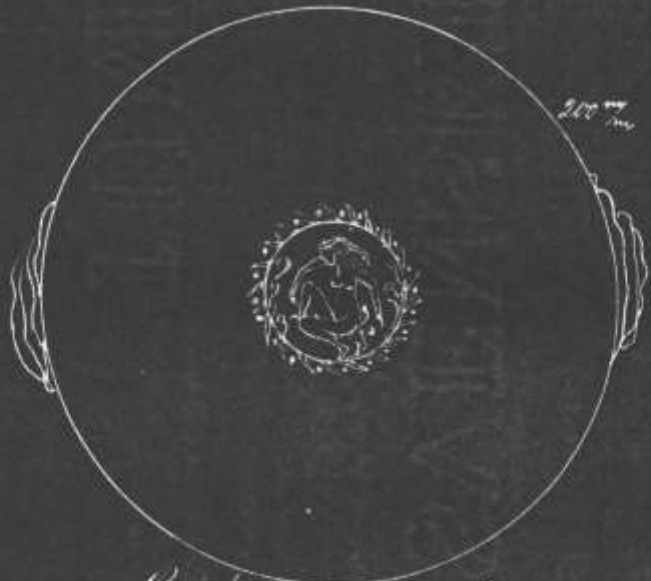
110



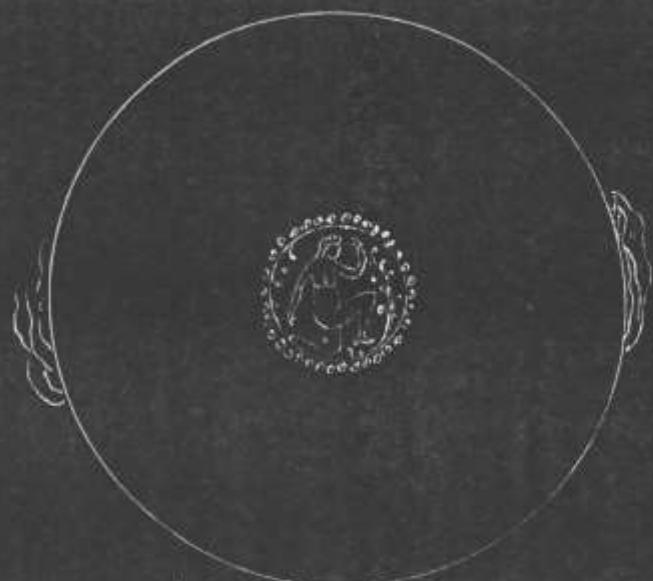
Skål H/179 "



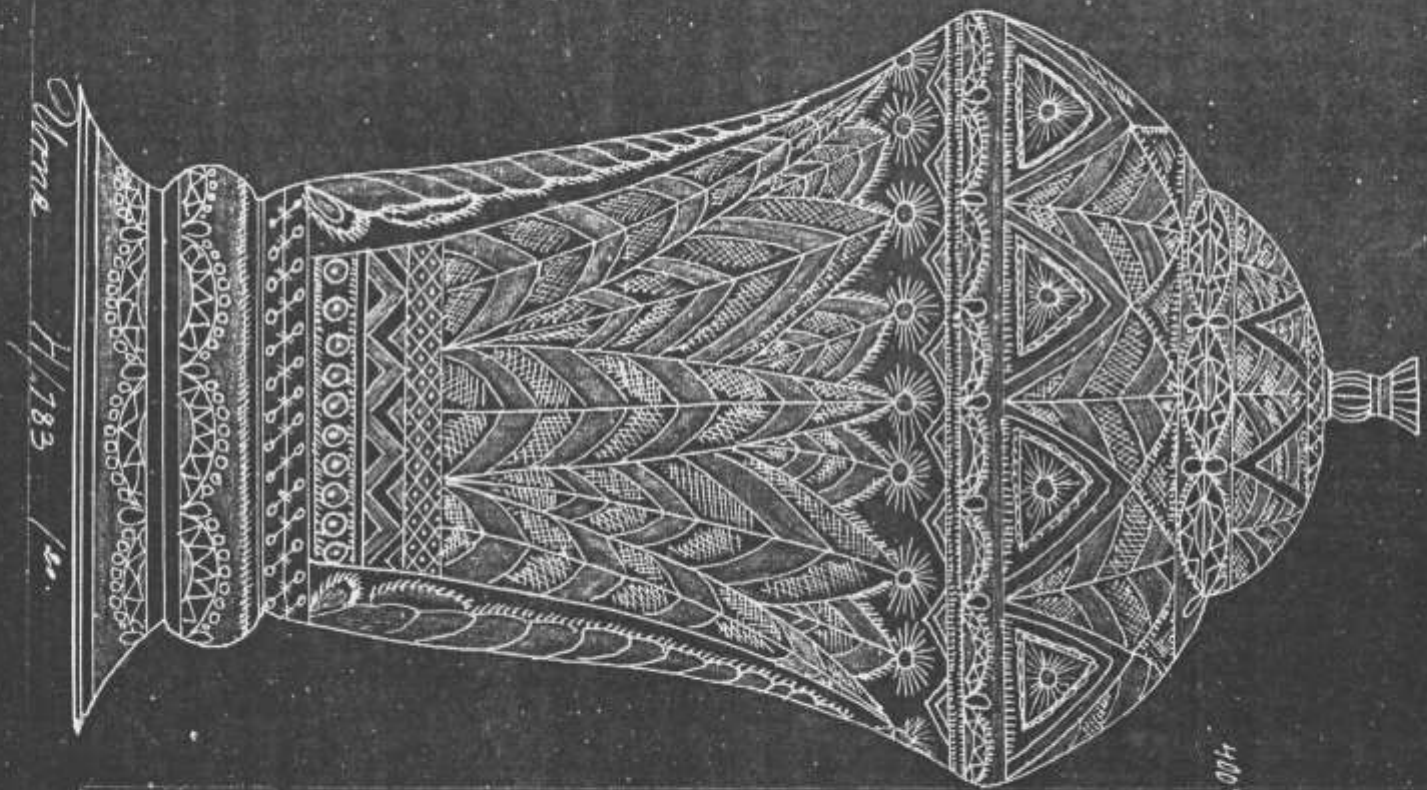
Bricka H/180 "



Bricka H/181 "

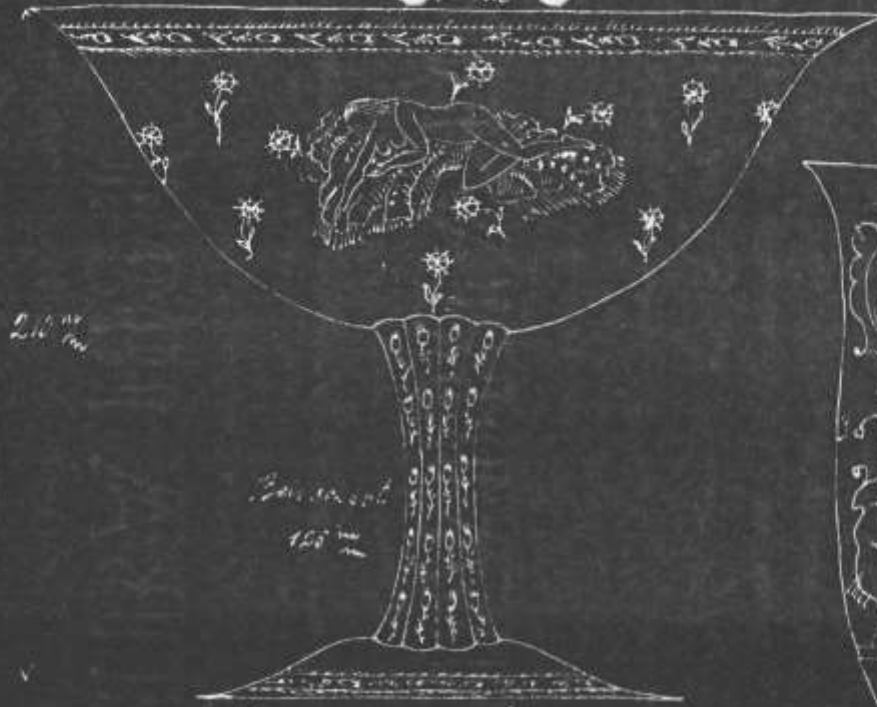


Bricka H/182 "



Ums
H. 183
1/2

110 X



210 mm

Sammenheng
150 mm

Kiel H 184



95 mm

Kiel H 185



180 mm

Vas H 186



80 mm

Brandvinsgl. H 187



75 mm

Ben over sit
105 mm



20 mm

Chenonvinsgl.



180 mm

Ben over sit

95 mm

Starkvinsgl.

Rödringsgl.

Terri's H 188



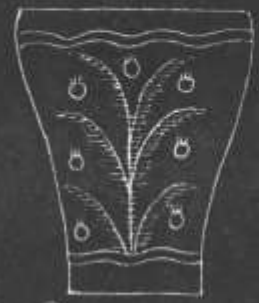
450 mm



230 mm

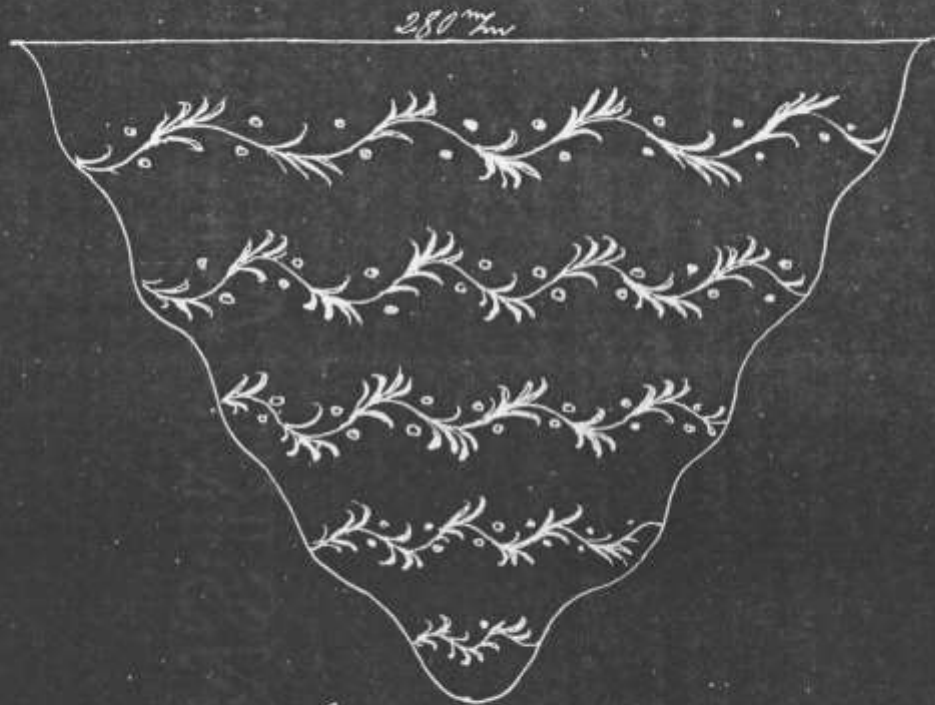
Karafe H/290

Lampskupa H/139



90 mm

Dricksqle H/191



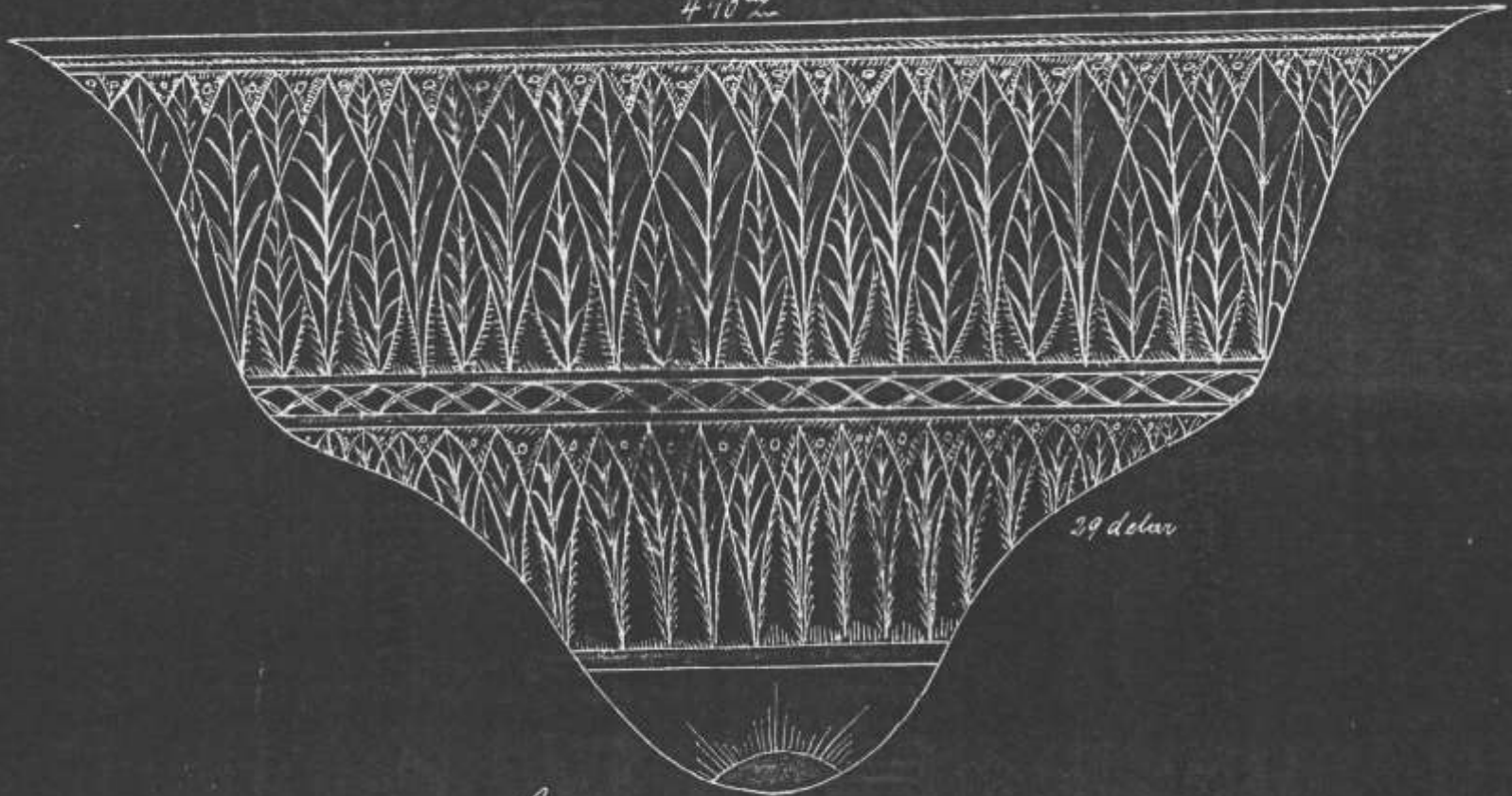
Lampkupa H/192 120



Pönnöinsgl. H/193 20.

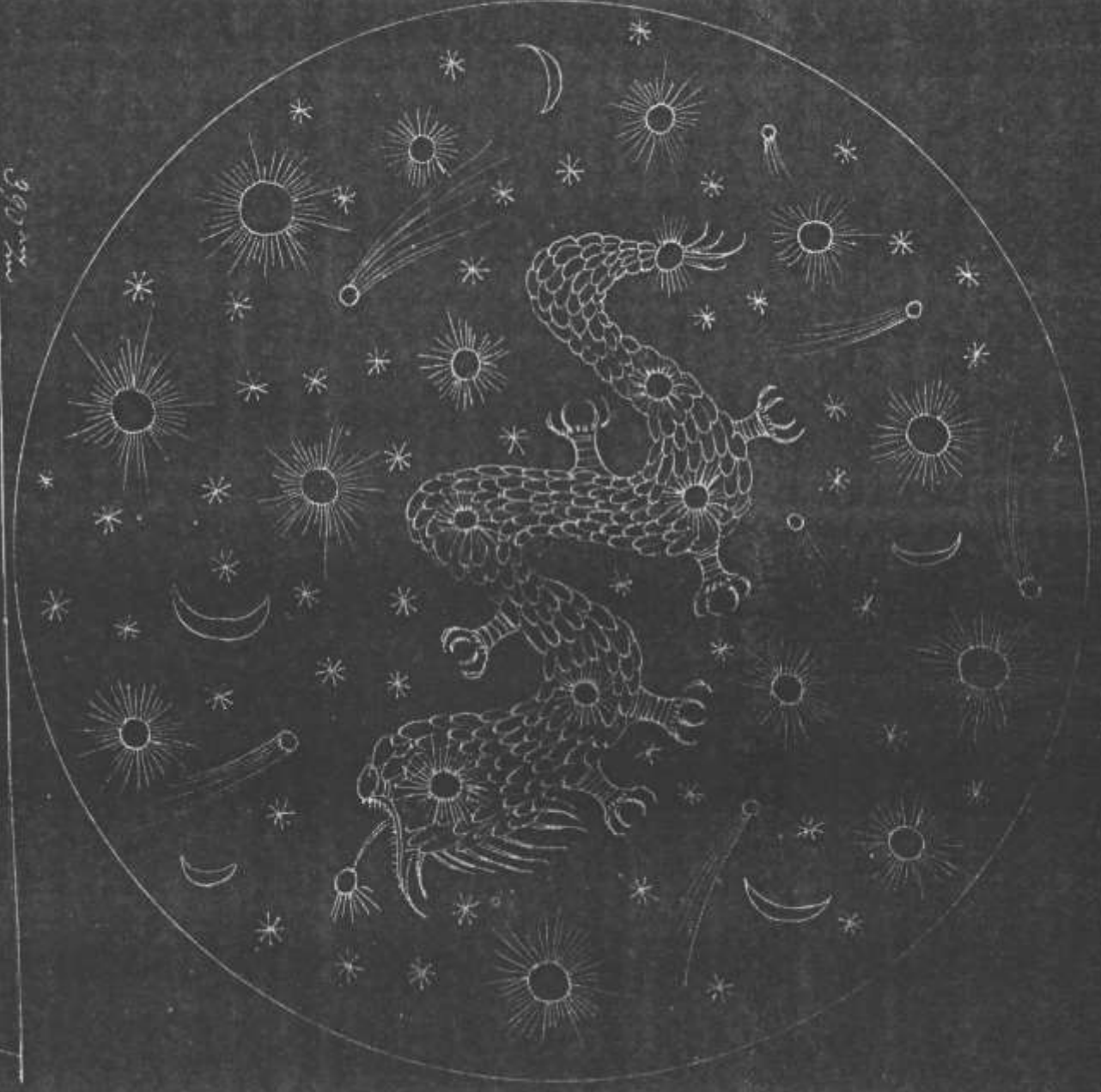
33.

410^{mm}



29 dolar

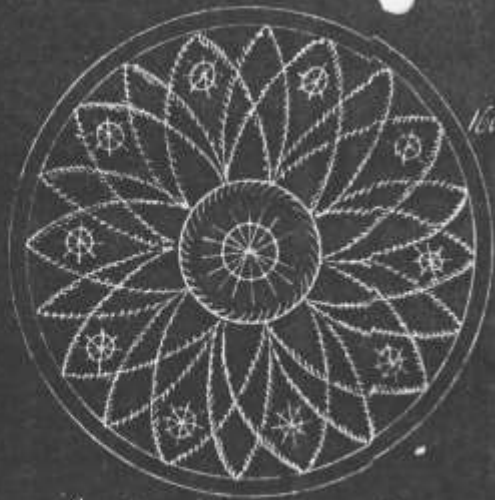
Lampkupa H. 194



390 m

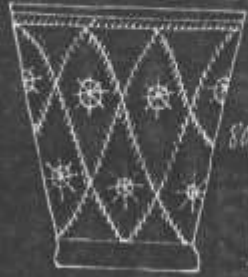
Сампокузон Н 195

26 195, a utani chueke.



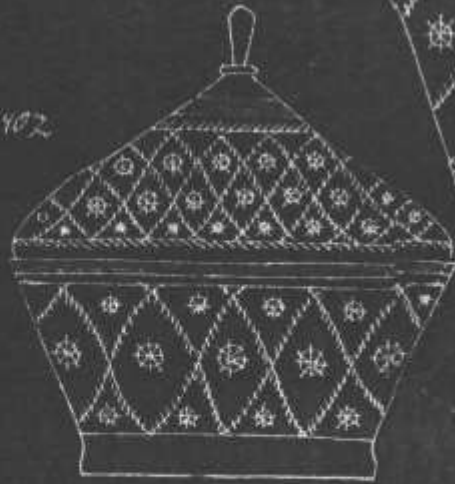
160Z

Massiette H/196



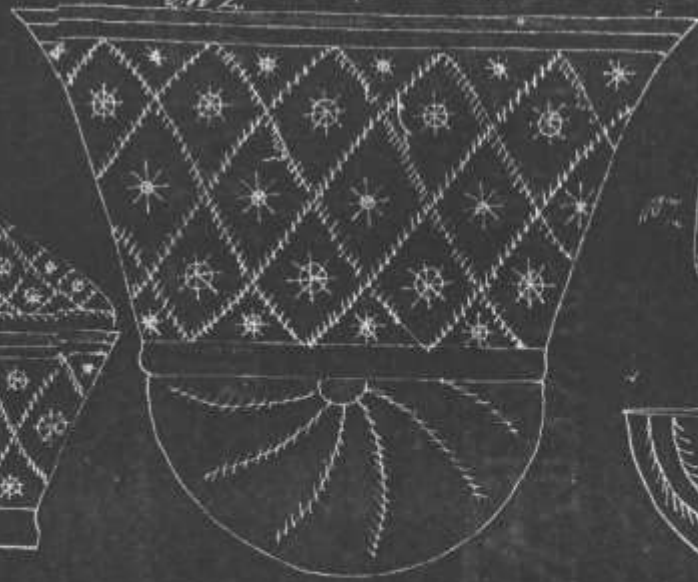
80Z

Dickerglas H/197



140Z

Bon'onjær H/198



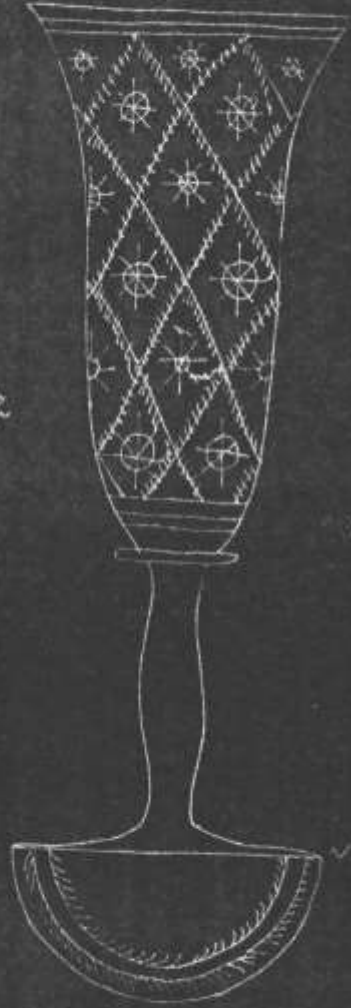
910Z

Kål H/199



190Z

Blomgl. H/200



Blomgl. H/201