

**AKTIEBOLAGET
DE SVENSKA KRISTALLGLASBRUKEN**



**STOCKHOLM
SWEDEN**

TELEGRAPHIC ADDRESS
"CRYSTAL", STOCKHOLM

AKTIEBOLAGET DE SVENSKA KRISTALLGLASBRUKEN

TELEGRAPHIC ADDRESS:
"CRYSTAL", STOCKHOLM

EXPORT DEPARTMENT

STOCKHOLM C

PRISFÖRÄNDRINGAR.

De nya priserna å Plain, Etched or Pantographed Wines er -
hålles genom att de nuvarande priserna reduceras med följande:

	<u>Soda Quality.</u>	<u>Crystal Quality.</u>
Liqueurs,	Kr. 3:40	Kr. 3:75
Ports,	" 4:75	" 5:25
Sherries,	" 4:75	" 5:25
Jellies,	" 3:10	" 4:50
Glarets,	" 3:10	" 4:50
Champagnes,	" 0:70	" 1:--
Custards, footed,	" 0:70	" 1:--
" no foot,	" 1:10	" 1:--

Stockholm den 10. Juni 1922.

Lägg märke till att priserna i juni 1922 blir **lägre** än de tidigare var: "de nuvarande priserna **reduceras** med..."

Note: the prices in June 1922 are **reduced** compared to earlier, with the sums listed.



»ROMA»

This is a most delicately cut suite in finest heavy Crystal Quality, and made according to old drawings.
The brilliancy of the cutting and the attractiveness of the shape is unequalled.



»ADELAIDE»

This is another delicately cut suite in finest heavy Crystal quality in the eighteenth century style. The special finishing process gives to the cutting of the Service a lustre and brilliancy which is unequalled.



·SMYRNA·

A most delicately cut suite in finest heavy crystal quality.
The lustre and brilliancy of this cutting is unequalled.



»HULL»

A delicately cut suite in finest full crystal.



» SAN FRANCISCO »

A cut Service in finest Full Crystal Quality. The lustre of the cutting is most attractive.



›MADRAS›

A beautiful cut suite in finest Full Crystal Quality.



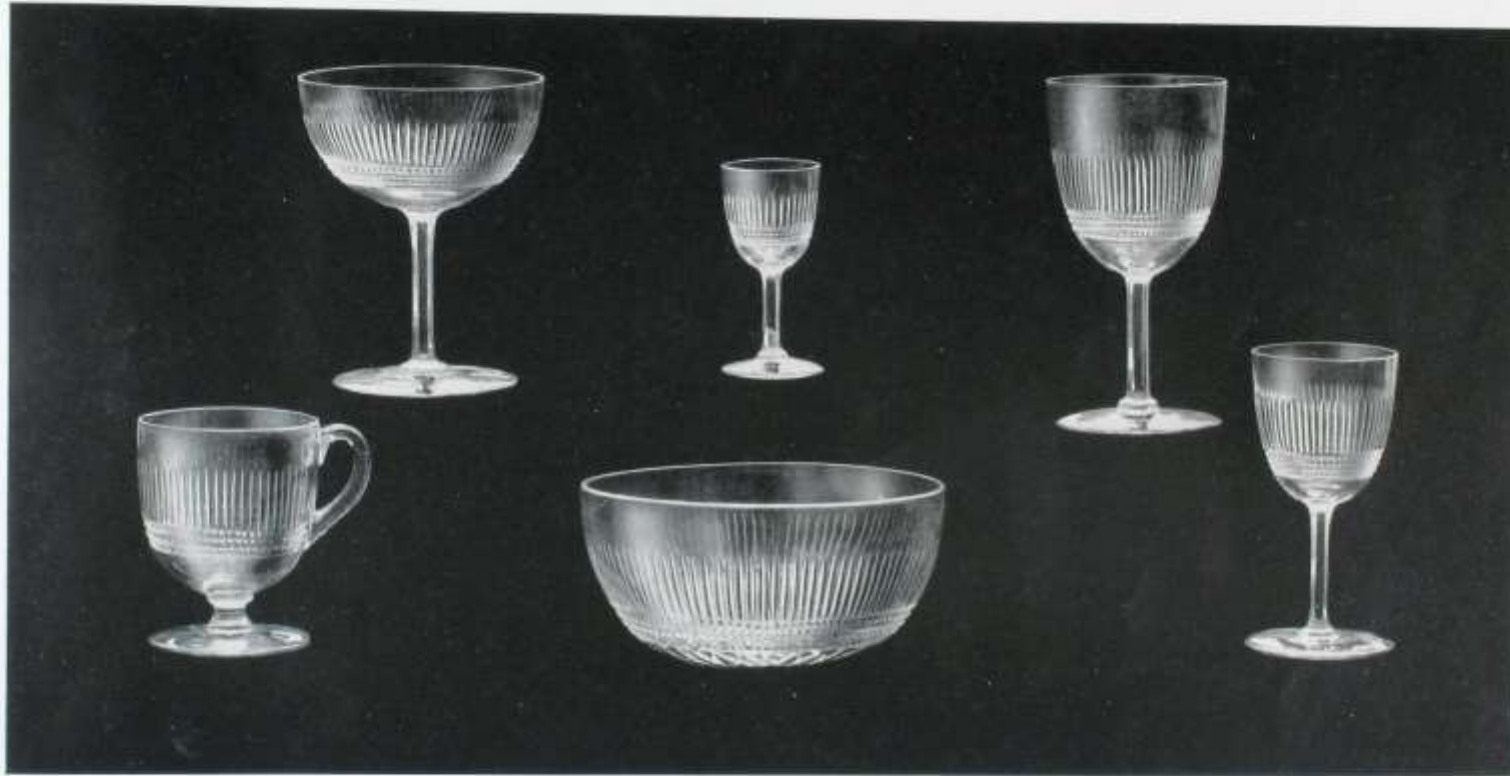
»TOKIO»

A delicately cut suite in finest heavy crystal quality.



»MAGELLAN»

This Service has a delicately cut decoration on Full Crystal Quality. The smartness of the design is very graceful.



ROSARIO

A beautiful Service, very nicely cut on Full Crystal goods.



»BOSTON»

A very attractive suite, nicely cut in Full Crystal Quality.



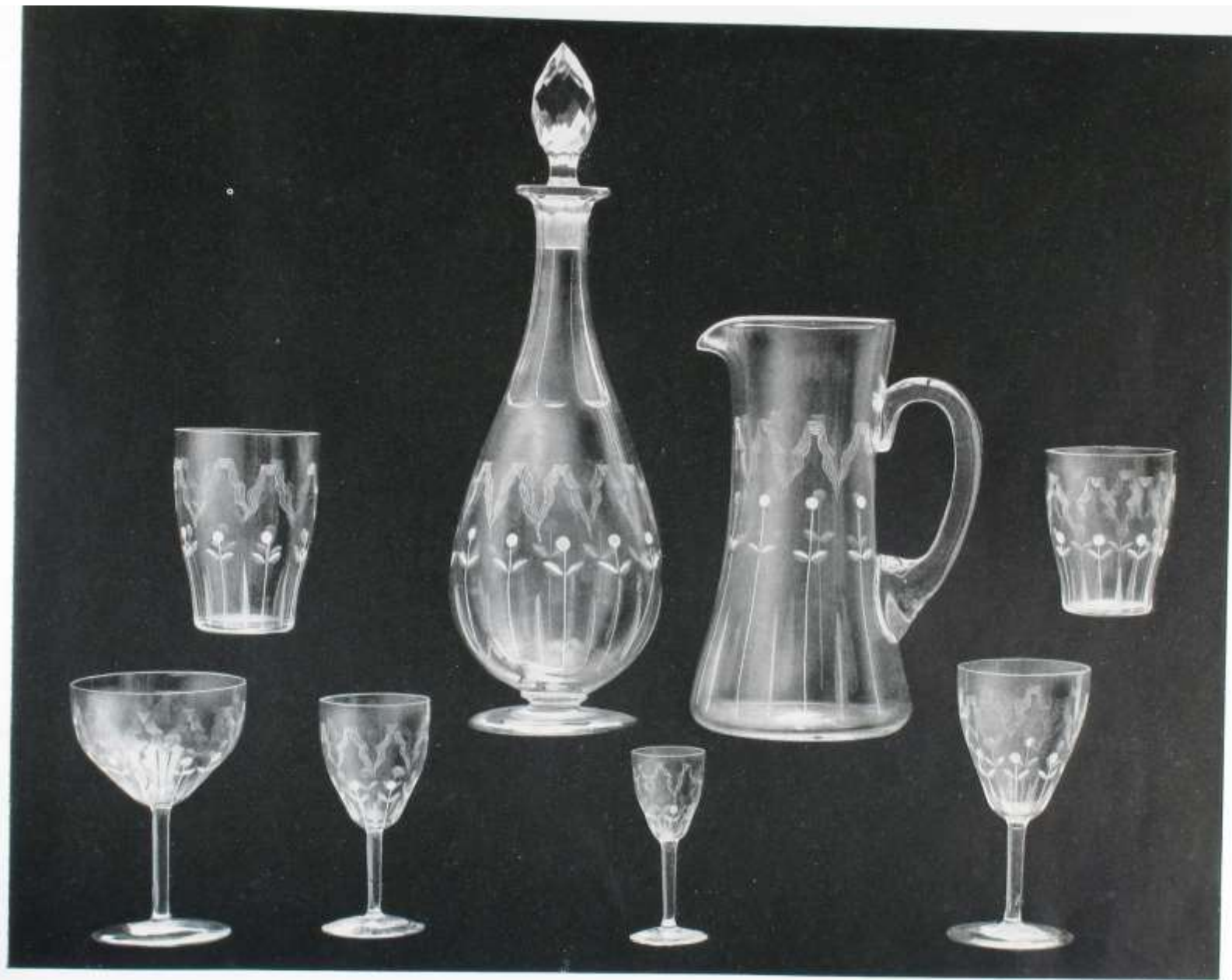
»BERMUDA», Cut.

This is another very graceful suite of an attractive bell shape. Made in Full Crystal Quality the price must be considered being very reasonable.



»ADEN»

A fancy cut suite in finest crystal quality.



ATHEN

A fancy cut suite in fine Crystal Quality.



»BAGDAD.»

A cut suite in finest heavy crystal.



•NATAL•

A nicely cut suite in finest full crystal quality.
The lustre of the cutting is most attractive, yet the price is within reach of all.



·ODESSA·

A lightly cut suite in finest crystal quality.



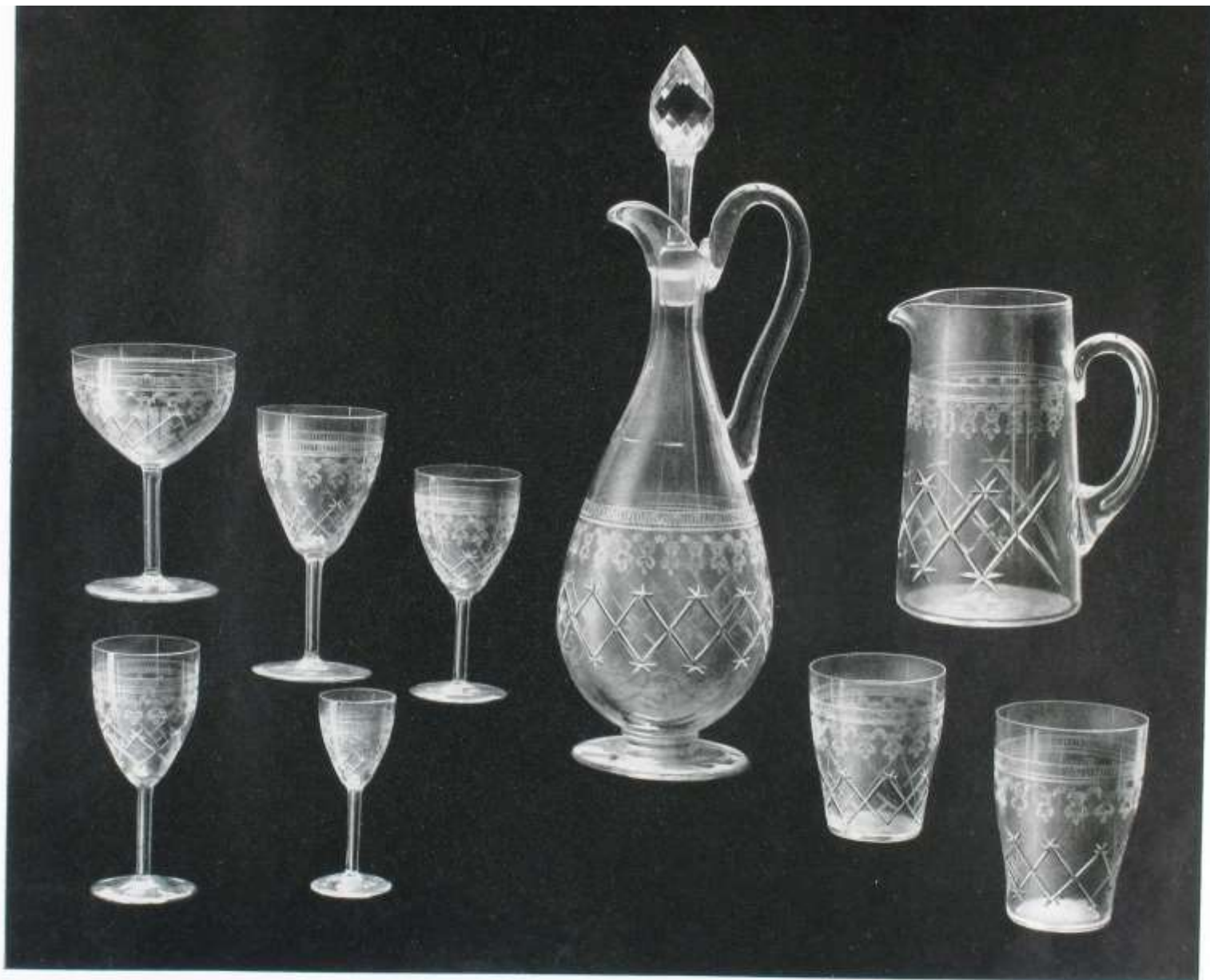
VALENCIA

A lightly cut suite in finest crystal quality.
The brilliancy and lustre of the cutting is most attractive.



CAIRO

A nicely cut and etched suite in finest crystal quality at a very reasonable price.



•NORFOLK•

This is a most useful suite. Cut and etched in fine Crystal Quality, yet the price is very reasonable.
There is nothing like it on the market.



«PALL MALL»

A suite delicately cut and pantographed in finest crystal quality.
The attractiveness of this service is unequalled, yet the price is within reach of all.



» CANTON »

A delicately pantographed pattern on full crystal goods.

Bergdala glastekniska museum äger pantografplåten / owns the pantograph template till servis Canton.





»CEYLON»

This is a most attractive pattern pantographed on full crystal goods.

Bergdala glastekniska museum äger pantografplåten / owns the pantograph template till servis Ceylon.





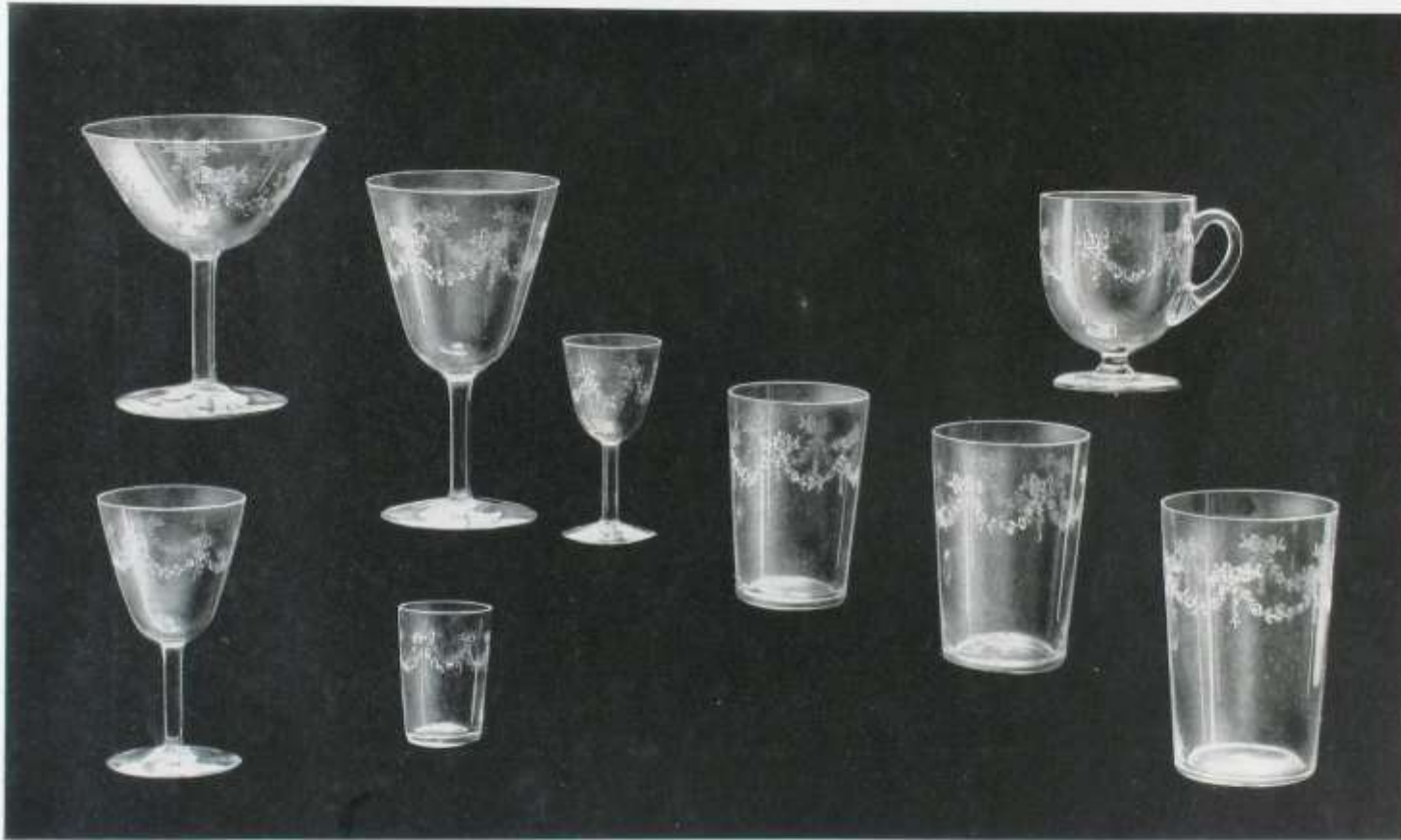
»CHILE»

This is an attractive Service, pantographed on Full Crystal goods.

Bergdala glastekniska museum äger pantografplåten / owns the pantograph template till servis Chile.

Inventarienummer BGM_00_126 (baksida/reverse)





» COLOMBIA »

A nicely pantographed pattern in thin fine Crystal Quality.

Bergdala glastekniska museum äger pantografplåten / owns the pantograph template till servis Colombia





»BALTIMORE»

Also this suite is a most priceworthy one.
Made in crystal quality and nicely etched.



»KEY»

A nicely etched suite in crystal quality,
decorated with the famous »Key and Border» pattern.



·ROUEN·

A very useful suite in crystal quality, nicely etched.



»SYDNEY»

This is another nicely etched suite in crystal quality.



MELBOURNE

A most priceworthy plain suite in best American quality.
Especially suitable for hotels etc.



»SUDAN»

A most attractive suite in best American quality.

Model "ROMA"

Quality: FULL CRYSTAL

Liqueurs	175:—	Finger Bowls	345:—
Sherries	195:—	Decanters, Pint	1,320:—
Ports	195:—	* Quart	1,600:—
Jellies	235:—	* Claret	1,875:—
Clarets	235:—	Tankards, 1 pt.	700:—
Champagnes	325:—	* 1½ pt.	950:—
Custards	275:—	* 2 pt.	1,150:—
Tumblers ¼ pt.	180:—	* 3 pt.	
* ⅔ pt.	225:—	Ice-plates	415:—
* ½ pt.	290:—		
* ¾ pt.	355:—		
* 1 pt.			

Model "ADELAIDE"

Quality: FULL CRYSTAL

Liqueurs	150:—	Finger Bowls	300:—
Sherries	165:—	Decanters, Pint	1,200:—
Ports	165:—	* Quart	1,475:—
Jellies	210:—	* Claret	1,750:—
Clarets	210:—	Tankards, 1 pt.	600:—
Champagnes	275:—	> 1 ¹ / ₂ pt.	800:—
Custards	250:—	> 2 pt.	1,000:—
Tumblers ¹ / ₄ pt.	155:—	> 3 pt.	
* ² / ₅ pt.	200:—	Ice-plates	350:—
> ¹ / ₂ pt.	250:—		
> ³ / ₄ pt.	300:—		
> 1 pt.			

Model "SMYRNA"

Quality: FULL CRYSTAL

Liqueurs	135:—	Finger Bowls	409:—
Sherries	217:—	Decanters, Pint	885:—
Ports	217:—	» Quart	960:—
Jellies	244:—	» Claret	1,070:—
Clarets	244:—	Tankards, 1 pt.	435:—
Champagnes low	274:—	» 1 ¹ / ₂ pt.	485:—
Custards	258:—	» 2 pt.	540:—
Tumblers ¹ / ₄ pt.	153:—	» 3 pt.	690:—
» ² / ₆ pt.	181:—	Ice-plates	
» ¹ / ₂ pt.	228:—	Goblets ¹ / ₂ pt.	307:—
» ³ / ₄ pt.	256:—		
» 1 pt.			

Model "HULL"

Quality: FULL CRYSTAL

Liqueurs	71:—	Finger Bowls	194:—
Sherries	93:—	Decanters, Pint	540:—
Ports	93:—	> Quart	665:—
Jellies	115:—	> Claret	775:—
Clarets	115:—	Tankards, 1 pt.	315:—
Champagnes low	132:—	> 1 1/2 pt.	355:—
Custards	128:—	> 2 pt.	420:—
Tumblers 1/4 pt.	88:—	> 3 pt.	550:—
> 2/5 pt.	102:—	Ice-plates	
> 1/2 pt.	112:—	Goblets 1/2 pt.	139:—
> 3/4 pt.	134:—		
> 1 pt.			

Model "SAN FRANCISCO"

Quality: FULL CRYSTAL

Liqueurs	135: —	Finger Bowls	410: —
Sherries	170: —	Decanters, Pint	905: —
Ports	170: —	> Quart	1,005: —
Jellies	230: —	> Claret	1,115: —
Clarets	230: —	Tankards, 1 pt.	440: —
Champagnes	275: —	> 1 1/2 pt.	500: —
Custards footed	205: —	> 2 pt.	560: —
Tumblers 1/4 pt.	155: —	> 3 pt.	665: —
> 2/5 pt.	185: —	Ice-plates	370: —
> 1/2 pt.	220: —		
> 3/4 pt.	260: —		
> 1 pt.	305: —		

Model "MADRAS"

Quality: FULL CRYSTAL

Liqueurs	96:—	Finger Bowls	295:—
Sherries	115:—	Decanters, Pint	790:—
Ports	115:—	• Quart	865:—
Jellies	140:—	• Claret	975:—
Clarets	140:—	Tankards, 1 pt.	370:—
Champagnes	180:—	• 1 1/2 pt.	425:—
Custards	150:—	• 2 pt.	490:—
Tumblers 1/4 pt.	120:—	• 3 pt.	635:—
• 2/5 pt.	130:—	Ice-plates	295:—
• 1/2 pt.	150:—		
• 3/4 pt.	180:—		
• 1 pt.	195:—		

Model "TOKIO"

Quality: FULL CRYSTAL

Liqueurs	88:—	Finger Bowls	292:—
Sherries	124:—	Decanters, Pint	645:—
Ports	124:—	» Quart	720:—
Jellies	148:—	» Claret	830:—
Clarets	148:—	Tankards, 1 pt.	360:—
Champagnes low	178:—	» 1½ pt.	425:—
Custards	159:—	» 2 pt.	470:—
Tumblers ¼ pt.	89:—	» 3 pt.	620:—
» ⅔ pt.	102:—	Ice-plates	
» ½ pt.	127:—	Goblets ½ pt.	211:—
» ¾ pt.	145:—		
» 1 pt.			

Model "MAGELLAN"

Quality: FULL CRYSTAL

Liqueurs	76:—	Finger Bowls	202:—
Sherries	108:—	Decanters, Pint	450:—
Ports	108:—	» Quart	505:—
Jellies	124:—	» Claret	635:—
Clarets	124:—	Tankards, 1 pt.	335:—
Champagnes low	142:—	» 1 1/2 pt.	375:—
Custards	148:—	» 2 pt.	445:—
Tumblers 1/4 pt.	102:—	» 3 pt.	570:—
» 2/5 pt.	111:—	Ice-plates	
» 1/2 pt.	122:—	Goblets 1/2 pt.	149:—
» 3/4 pt.	144:—	
» 1 pt.	
.....		

Model "ROSARIO"

Quality: FULL CRYSTAL

Liqueurs	105:—	Finger Bowls	334:—
Sherries	155:—	Decanters, Pint	765:—
Ports	155:—	» Quart	815:—
Jellies	177:—	» Claret	925:—
Clarets	177:—	Tankards, 1 pt.	415:—
Champagnes low	213:—	» 1 1/2 pt.	475:—
Custards	190:—	» 2 pt.	540:—
Tumblers 1/4 pt.	129:—	» 3 pt.	835:—
» 2/5 pt.	144:—	Ice-plates	
» 1/2 pt.	180:—	Goblets 1/2 pt.	245:—
» 3/4 pt.	204:—		
» 1 pt.			

Model "BOSTON"

Quality: FULL CRYSTAL

Liqueurs	80:—	Finger Bowls	262:—
Sherries	99:—	Decanters, Pint	600:—
Ports	99:—	* Quart	660:—
Jellies	123:—	* Claret	770:—
Clarets	123:—	Tankards, 1 pt.	385:—
Champagnes low	145:—	* 1 ¹ / ₂ pt.	495:—
Custards	142:—	* 2 pt.	635:—
Tumblers ¹ / ₄ pt.	83:—	* 3 pt.	835:—
* ² / ₅ pt.	99:—	Ice-plates	
* ¹ / ₂ pt.	124:—	Goblets ¹ / ₂ pt.	178:—
* ³ / ₄ pt.	153:—		
* 1 pt.			

Model "BERMUDA", Cut

Quality: FULL CRYSTAL

Liqueurs	81:—
Sherries	92:—
Ports	92:—
Jellies	120:—
Clarets	120:—
Champagnes	145:—
Custards no foot	115:—
Tumblers $\frac{1}{4}$ pt.	80:—
» $\frac{2}{5}$ pt.	92:—
» $\frac{1}{2}$ pt.	110:—
» $\frac{3}{4}$ pt.	145:—
» 1 pt.	

Finger Bowls	245:—
Decanters, Pint	640:—
» Quart	745:—
» Claret	855:—
Tankards, 1 pt.	335:—
» $1\frac{1}{2}$ pt.	445:—
» 2 pt.	585:—
» 3 pt.	
Ice-plates	230:—

Model "BERMUDA", Plain

Quality: FULL CRYSTAL

Liqueurs	45:—
Sherries	48:60
Ports	48:60
Jellies	63:—
Clarets	63:—
Champagnes	72:—
Custards no foot	72:—
Tumblers $\frac{1}{4}$ pt.	36:—
> $\frac{2}{5}$ pt.	41:40
> $\frac{1}{2}$ pt.	48:60
> $\frac{3}{4}$ pt.	63:—
> 1 pt.	78:—

Finger Bowls	90:—
Decanters, Pint Cut Neck	320:—
> Quart >	400:—
> Claret >	510:—
Tankards, 1 pt. Cut Facett	185:—
> $1\frac{1}{2}$ pt. >	215:—
> 2 pt. >	295:—
> 3 pt.	
Ice-plates	82:50

Model "ADEN"

Quality: CRYSTAL

Liqueurs	130:—
Sherries	170:—
Ports	170:—
Jellies	210:—
Clarets	210:—
Champagnes low	255:—
Custards	210:—
Tumblers $\frac{1}{4}$ pt.	155:—
» $\frac{2}{5}$ pt.	173:—
» $\frac{1}{2}$ pt.	185:—
» $\frac{3}{4}$ pt.	225:—
» 1 pt.	

Finger Bowls	280:—
Decanters, Pint	680:—
» Quart	1,050:—
» Claret	1,135:—
Tankards, 1 pt.	400:—
» $1\frac{1}{2}$ pt.	475:—
» 2 pt.	575:—
» 3 pt.	
Ice-plates	280:—

Model "ATHEN"

Quality: CRYSTAL

Liqueurs	46:—
Sherries	51:—
Ports	51:—
Jellies	66:—
Clarets	66:—
Champagnes	80:—
Custards	64:—
Tumblers $\frac{1}{4}$ pt.	49:—
» $\frac{2}{6}$ pt.	50:—
» $\frac{1}{2}$ pt.	59:—
» $\frac{3}{4}$ pt.	76:—
» 1 pt.	102:—

Finger Bowls	134:—
Decanters, Pint	455:—
» Quart	530:—
» Claret	610:—
Tankards, 1 pt.	195:—
» $1\frac{1}{2}$ pt.	230:—
» 2 pt.	300:—
» 3 pt.	
Ice-plates	149:—

Model "BAGDAD"

Quality: FULL CRYSTAL

Liqueurs	100:—	Finger Bowls S. B.	225:—
Sherries	120:—	Decanters, 1/2 pint	900:—
Ports	120:—	» Quart	975:—
Jellies	150:—	» Claret	1,100:—
Clarets	150:—	Tankards, 1 pt.	300:—
Champagnes	185:—	» 1 1/2 pt.	400:—
Custards	120:—	» 2 pt.	525:—
Tumblers 1/4 pt.	65:—	» 3 pt.	
» 2/5 pt.	75:—	Ice-plates	225:—
» 1/2 pt.	85:—	Goblets 9 ozs.	250:—
» 3/4 pt.	105:—		
» 1 pt.			

Model "NATAL"

Quality: FULL CRYSTAL

Liqueurs	130:—	Finger Bowls	300:—
Sherries	165:—	Decanters, Pint Plain Neck	950:—
Ports	165:—	◦ Quart ◦ ◦	1,100:—
Jellies	200:—	◦ Claret ◦ ◦	1,225:—
Clarets	200:—	Tankards, 1 pt.	400:—
Champagnes	240:—	◦ 1½ pt.	475:—
Custards	165:—	◦ 2 pt.	575:—
Tumblers ¼ pt.	105:—	◦ 3 pt.	
◦ ⅔ pt.	135:—	Ice-plates	300:—
◦ ½ pt.	165:—		
◦ ¾ pt.	200:—		
◦ 1 pt.			

Model "ODESSA"

Quality: CRYSTAL

Liqueurs	45:—	Finger Bowls	146:—
Sherries	54:—	Decanters, Pint	458:—
Ports	54:—	» Quart	502:—
Jellies	63:—	» Claret	587:—
Clarets	67: 75	Tankards, 1 pt.	161: 50
Champagnes	81: 25	» 1 1/2 pt.	205:—
Custards	71: 75	» 2 pt.	244:—
Tumblers 1/4 pt.	49: 50	» 3 pt.	213:—
» 1/5 pt.	52: 75	Ice-plates	218:—
» 2/5 pt.	58: 50		
» 3/4 pt.	79:—		
» 1 pt.	102:—		

Model "VALENCIA"

Quality: CRYSTAL

Liqueurs	47: 50	Finger Bowls	146: —
Sherries	54: —	Decanters, Pint	569: —
Ports	54: —	> Quart	622: —
Jellies	63: —	> Claret	707: —
Clarets	67: 75	Tankards, 1 pt.	161: 50
Champagnes	82: 25	> 1½ pt.	205: —
Custards	71: 75	> 2 pt.	244: —
Tumblers ¼ pt.	54: —	> 3 pt.	313: —
> ⅔ pt.	57: 50	Ice-plates	146: —
> ½ pt.	63: 25		
> ¾ pt.	83: 75		
> 1 pt.	106: —		

Model "CAIRO"

Quality: CRYSTAL

Liqueurs	48: —	Finger Bowls	161: 50
Sherries	54: 50	Decanters, Pint	580: —
Ports	54: 50	> Quart	614: —
Jellies	63: 20	> Claret	699: —
Clarets	68: —	Tankards, 1 pt.	201: 50
Champagnes	82: 75	> 1 1/2 pt.	245: —
Custards	72: —	> 2 pt.	284: —
Tumblers 1/4 pt.	54: 50	> 3 pt.	353: —
> 2/5 pt.	58: —	Ice-plates	161: 50
> 1/2 pt.	63: 75		
> 3/4 pt.	84: —		
> 1 pt.	107: —		

Model "NORFOLK"

Quality: CRYSTAL

Liqueurs	50: 50	Finger Bowls	158: 50
Sherris	59: —	Decanters, Pint	570: —
Ports	59: —	» Quart	625: —
Jellies	76: 50	» Claret	705: —
Clarets	76: 50	Tankards, 1 pt.	190: —
Champagnes	96: —	» 1 1/2 pt.	215: —
Custards	78: —	» 2 pt.	240: —
Tumblers 1/4 pt.	68: —	» 3 pt.	
» 2/5 pt.	72: 50	Ice-plates	158: 50
» 1/2 pt.	77: —		
» 3/4 pt.	95: 50		
» 1 pt.	128: —		

Model "PALL MALL"

CUT AND ETCHED

Quality: CRYSTAL

Liqueurs	53:—	Finger Bowls	175:—
Sherries	60:—	Decanters, Pint	575:—
Ports	60:—	» Quart	600:—
Jellies	73:—	» Claret	675:—
Clarets	73:—	Tankards, 1 pt.	210:—
Champagnes	88:—	» 1½ pt.	245:—
Custards	77:—	» 2 pt.	285:—
Tumblers ¼ pt.	60:—	» 3 pt.	350:—
» ⅓ pt.	63:—	Ice-plates	190:—
» ½ pt.	70:—		
» ¾ pt.	90:—		
» 1 pt.	115:—		

Model "CANTON"

Quality: FULL CRYSTAL

Liqueurs	57: 50	Finger Bowls	123: —
Sherries	60: 50	Decanters, Pint	295: —
Ports	60: 50	» Quart	315: —
Jellies	72: 50	» Claret	445: —
Clarets	72: 50	Tankards, 1 pt.	200: —
Champagnes low	80: —	» 1½ pt.	215: —
Custards	95: —	» 2 pt.	235: —
Tumblers ¼ pt.	50: —	» 3 pt.	290: —
» ½ pt.	54: 50	Ice-plates	
» ¾ pt.	60: 50	Goblets ½ pt.	87: 50
» ¾ pt.	72: 50	
» 1 pt.	80: —	
		

Model "CEYLON"

Quality: FULL CRYSTAL

Liqueurs	57: 50	Finger Bowls	123: —
Sherries	60: 50	Decanters, Pint	425: —
Ports	60: 50	* Quart	480: —
Jellies	72: 50	* Claret	590: —
Clarets	72: 50	Tankards, 1 pt.	200: —
Champagnes	80: —	* 1½ pt.	215: —
Custards	95: —	* 2 pt.	235: —
Tumblers ¼ pt.	50: —	* 3 pt.	290: —
* ⅔ pt.	54: 50	Ice-plates	
* ½ pt.	60: 50	Goblets ½ pt.	87: 50
* ¾ pt.	72: 50		
* 1 pt.	80: —		

Model "CHILE"

Quality: FULL CRYSTAL

Liqueurs	84:—	Finger Bowls	123:—
Sherries	94:—	Decanters, Pint	390:—
Ports	94:—	" Quart	425:—
Jellies	113:—	" Claret	555:—
Clarets	113:—	Tankards, 1 pt.	200:—
Champagnes	126:—	" 1½ pt.	215:—
Custards	129:—	" 2 pt.	235:—
Tumblers ¼ pt.	50:—	" 3 pt.	290:—
" ⅔ pt.	54: 50	Ice-plates	
" ½ pt.	60: 50	Goblets ½ pt.	140:—
" ¾ pt.	72: 50		
" 1 pt.	80:—		

Model "COLOMBIA"

Quality: CRYSTAL

Liqueurs	41:—	Finger Bowls	90:—
Sherries	45:—	Decanters, Pint	380:—
Ports	45:—	» Quart	415:—
Jellies	54:—	» Claret	505:—
Clarets	54:—	Tankards, 1 pt.	155:—
Champagnes	58:—	» 1 ¹ / ₂ pt.	165:—
Custards	58:—	» 2 pt.	180:—
Tumblers ¹ / ₄ pt.	38:—	» 3 pt.	220:—
» ² / ₅ pt.	39:—	Ice-plates	90:—
» ¹ / ₂ pt.	40:—	Goblets ¹ / ₂ pt.	58:—
» ³ / ₄ pt.	46:—		
» 1 pt.	54:—		

Model "BALTIMORE"

Quality: CRYSTAL

Liqueurs	31:—	Finger Bowls	70:—
Sherries	35:—	Decanters, Pint Plain Neck	210:—
Ports	35:—	» Quart » »	230:—
Jellies	44:—	» Claret » »	315:—
Clarets	44:—	Tankards, 1 pt.	115:—
Champagnes	48:—	» 1½ pt.	125:—
Custards	48:—	» 2 pt.	140:—
Tumblers ¼ pt.	28:—	» 3 pt.	180:—
» ⅔ pt.	29:—	Ice-plates	70:—
» ½ pt.	30:—		
» ¾ pt.	36:—		
» 1 pt.	44:—		

Model "KEY"

Quality: CRYSTAL

Liqueurs	31:—
Sherries	35:—
Ports	35:—
Jellies	44:—
Clarets	44:—
Champagnes	48:—
Custards	48:—
Tumblers $\frac{1}{4}$ pt.	28:—
» $\frac{2}{5}$ pt.	29:—
» $\frac{1}{2}$ pt.	30:—
» $\frac{3}{4}$ pt.	36:—
» 1 pt.	44:—

Finger Bowls	70:—
Decanters, Pint Plain Neck	210:—
» Quart » »	230:—
» Claret » »	315:—
Tankards, 1 pt.	115:—
» $1\frac{1}{2}$ pt.	125:—
» 2 pt.	140:—
» 3 pt.	180:—
Ice-plates	70:—

Model "ROUEN"

Quality: CRYSTAL

Liqueurs	31:—
Sherries	35:—
Ports	35:—
Jellies	44:—
Clarets	44:—
Champagnes	48:—
Custards	48:—
Tumblers $\frac{1}{4}$ pt.	28:—
» $\frac{2}{6}$ pt.	29:—
» $\frac{1}{2}$ pt.	30:—
» $\frac{3}{4}$ pt.	36:—
» 1 pt.	44:—

Finger Bowls	70:—
Decanters, Pint Plain Neck	210:—
» Quart » »	230:—
» Claret » »	315:—
Tankards, 1 pt.	115:—
» $1\frac{1}{2}$ pt.	125:—
» 2 pt.	140:—
» 3 pt.	180:—
Ice-plates	70:—

Model "SYDNEY"

Quality: CRYSTAL

Liqueurs _____	31:—	Finger Bowls _____	70:—
Sherries _____	35:—	Decanters, Pint Plain Neck _____	210:—
Ports _____	35:—	» Quart » » _____	230:—
Jellies _____	44:—	» Claret » » _____	315:—
Clarets _____	44:—	Tankards, 1 pt. _____	115:—
Champagnes _____	48:—	» 1 ¹ / ₂ pt. _____	125:—
Custards _____	48:—	» 2 pt. _____	140:—
Tumblers ¹ / ₄ pt. _____	28:—	» 3 pt. _____	180:—
» ² / ₅ pt. _____	29:—	Ice-plates _____	70:—
» ¹ / ₂ pt. _____	30:—	_____	
» ³ / ₄ pt. _____	36:—	_____	
» 1 pt. _____	44:—	_____	
_____		_____	

Model "MELBOURNE"

Quality: AMERICAN

Liqueurs	18: 90	Finger Bowls	45: —
Sherries	22: 50	Decanters, Pint Cut Stopper and Cut Neck ³⁸⁸ —	282: —
Ports	22: 50	» Quart » » ³²¹ —	329: —
Jellies	30: 60	» Claret » » ⁴¹⁰ —	412: 50
Clarets	30: 60	Tankards, 1 pt.	67: 50
Champagnes	34: 20	» 1 1/2 pt.	76: 50
Custards	34: 20	» 2 pt.	90: —
Tumblers 1/4 pt.	16: 20	» 3 pt.	126: —
» 2/5 pt.	17: 10	Ice-plates	45: —
» 1/2 pt.	18: —		
» 3/4 pt.	23: 40		
» 1 pt.	30: 60		

Model "SUDAN"

Quality: AMERICAN

Liqueurs	18: 90
Sherries	22: 50
Ports	22: 50
Jellies	30: 60
Clarets	30: 60
Champagnes	34: 20
Custards	34: 20
Tumblers $\frac{1}{4}$ pt.	16: 20
> $\frac{2}{5}$ pt.	17: 10
> $\frac{1}{2}$ pt.	18: —
> $\frac{3}{4}$ pt.	23: 40
> 1 pt.	30: 60

Finger Bowls	45: —
Decanters, Pint, Cut Stopper and Cut neck <i>2,88</i>	282: —
> Quart	<i>321: —</i> 329: —
> Claret	<i>410: —</i> 412: 50
Tankards, 1 pt.	67: 50
> $1\frac{1}{2}$ pt.	76: 50
> 2 pt.	90: —
> 3 pt.	126: —
Ice-plates	45: —