

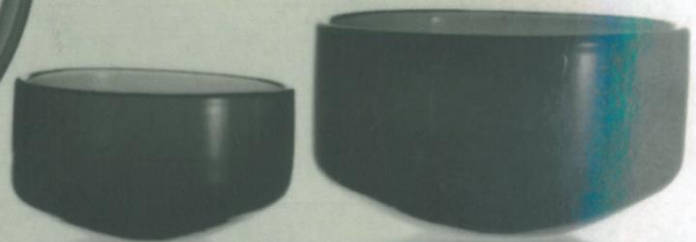
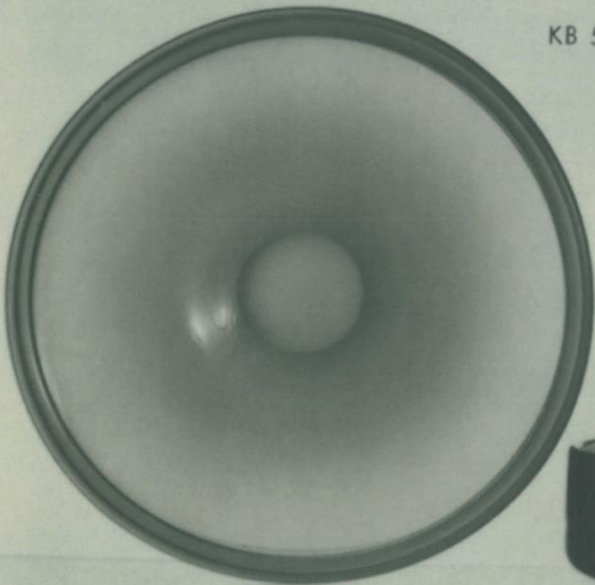


GULLASKRUF S GLASBRUKS AKTIEBOLAG

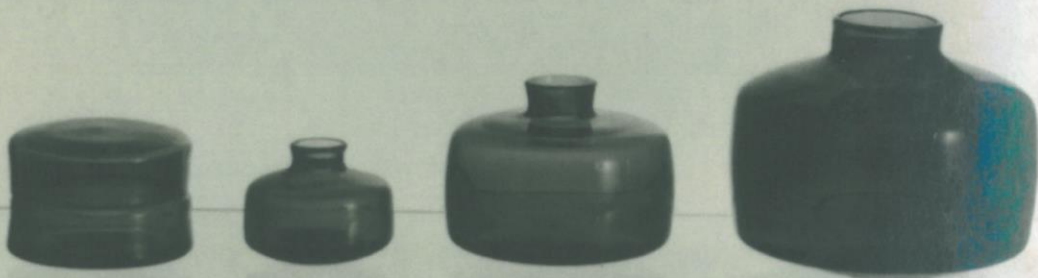
Gullaskruf Sweden  
Tel. Nybro 320 80



KB 59/44



KB 59/37



KB 59/35

KB 59/43



10



15  
KB 58/105



28



KB 58/115



KB 59/61



5  
KB 59/63



10  
"LYRA"



25



80  
KB 59/45



10



KB 59/62



KB 59/66





KB 56/22



KB 58/90



KB 58/107



KB 58/90



KB 58/107



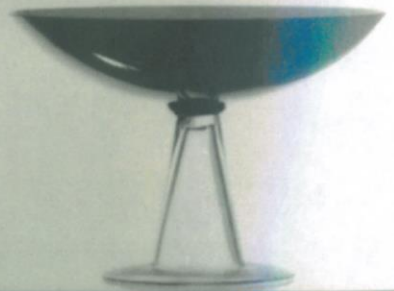
KB 58/94  
190 mm



140 mm

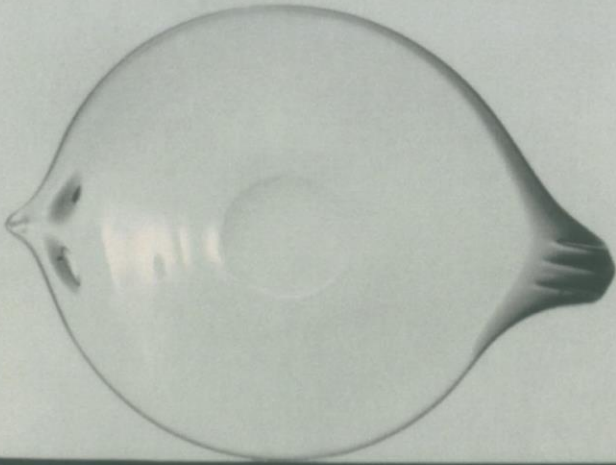


KB 58/93

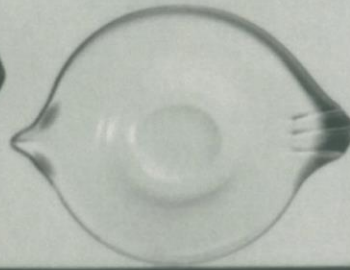


KB 58/101





KB 55/35



KB 55/37



KB 58/109



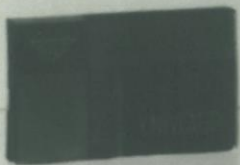
KB 58/108



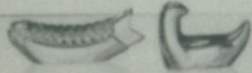
KB 58/110



KB 58/17



KB 58/15-16



KB 55/50



KB 55/49



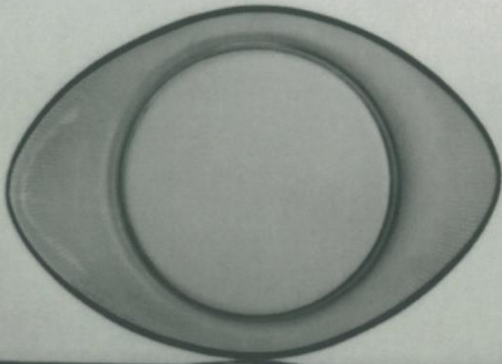
KB 55/48



KB 55/51



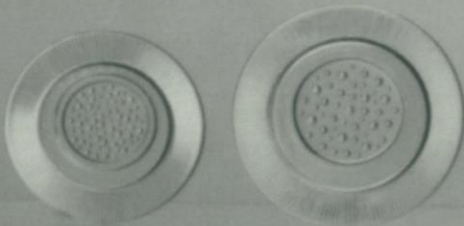
G 1/35



KB 58/85



KB 58/2



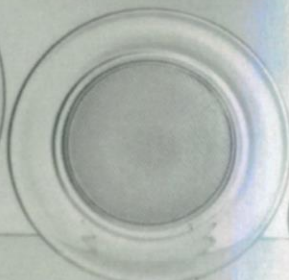
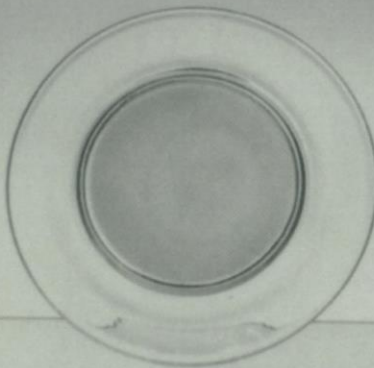
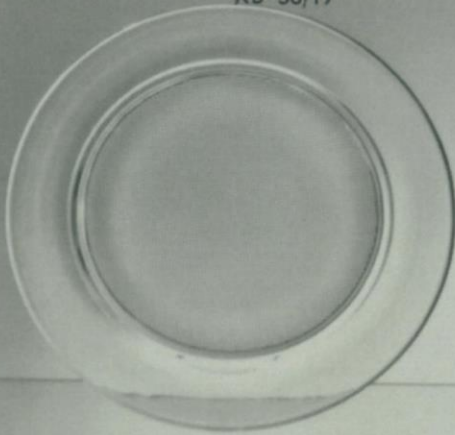
KB 58/19



KB 58/21



KB 59/30



KB 59/33



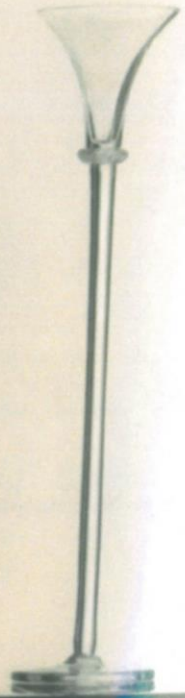
KB 61/74



KB 61/56



KB 59/34



KB 55/27



KB 55/21



KB 55/22



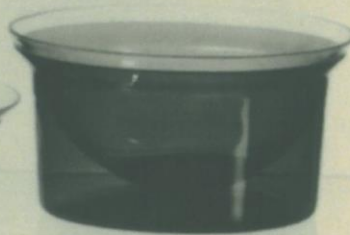
KB 59/1



KB 61/76



KB 58/36



KB 58/31



KB 58/89

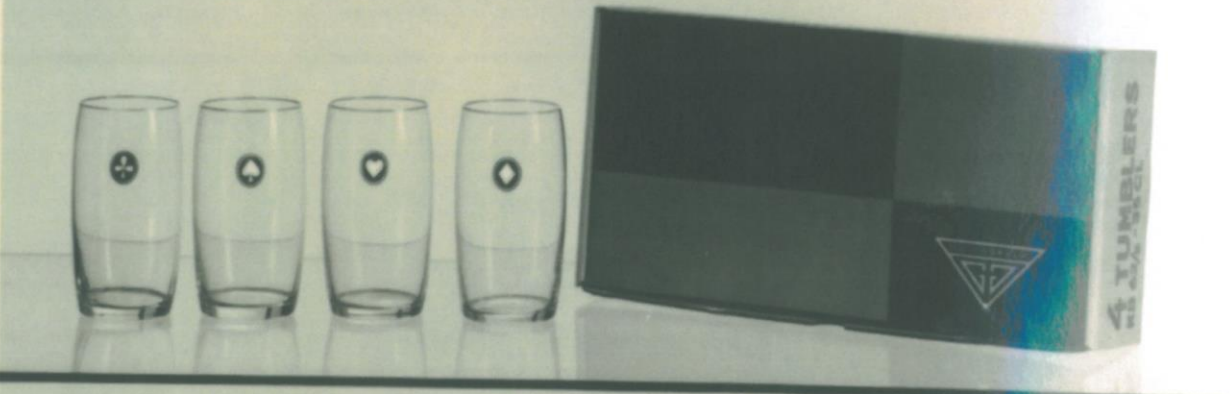




5      10      15      25      35      KB 59/1      KB 59/33  
KB 62/5



KB 62/35      KB 62/6      KB 62/7



KB 62/5      "BRIDGE"



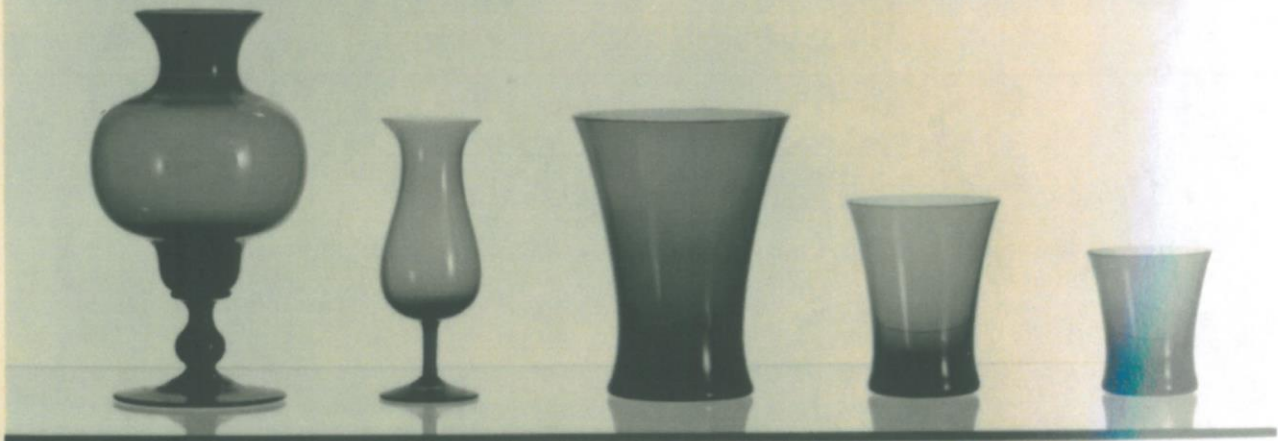


G 32/50

G 5/51 C

G 5/51 B

G 5/51 A



G 9/51

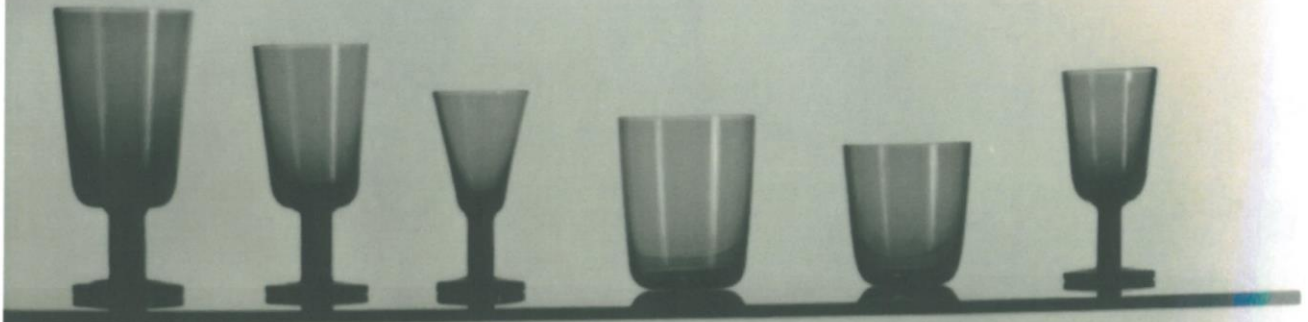
G 1/51

G 44/51

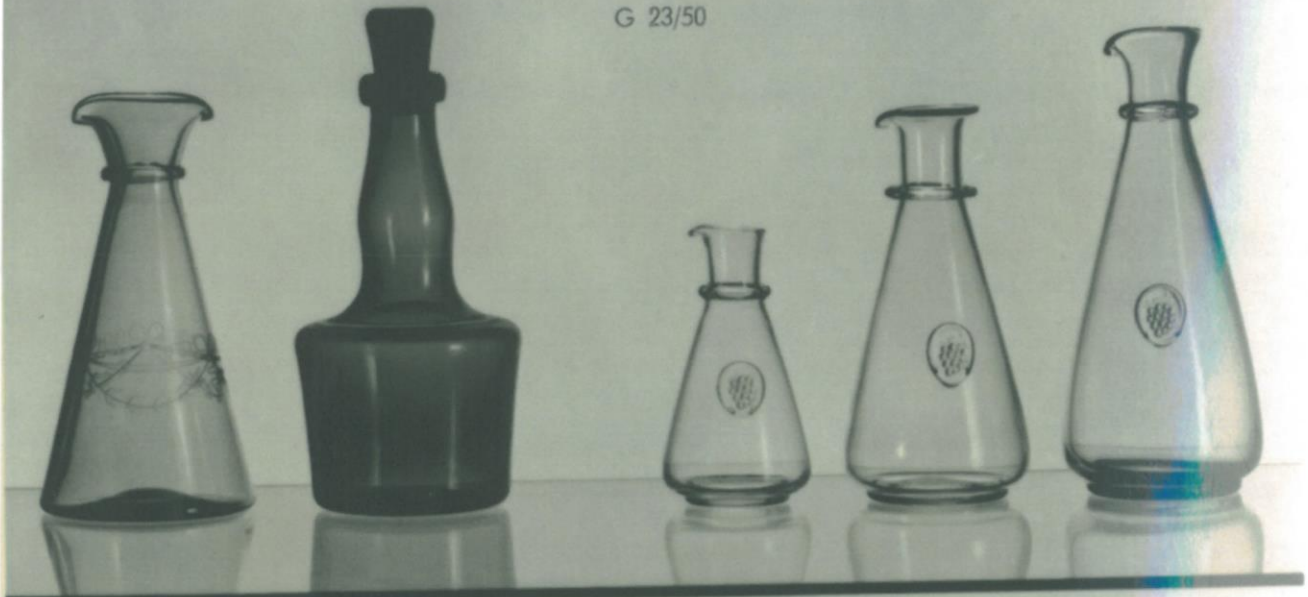


G 46/51

G 10/51

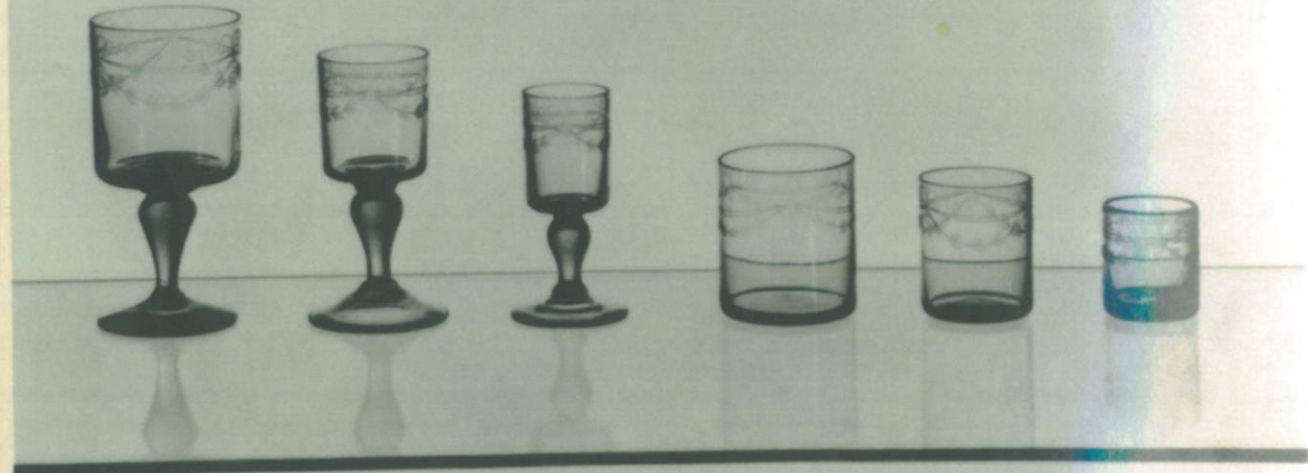


G 23/50



361

G 35/51



361



G 40/51



G 84/30



G 5/48



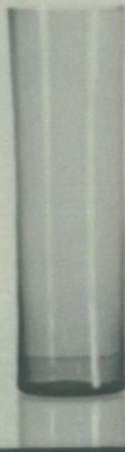
G 45 D



G 45 C

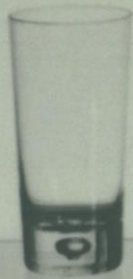


G 45 B



TREKLANG

KINA



BALLONG



P 551/16



P 551/21



P 551/19



KB 55/54



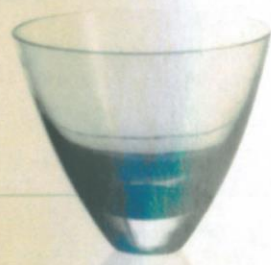
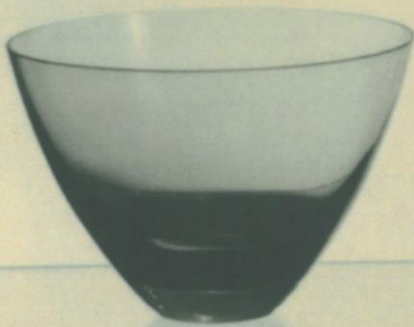
KB 55/38



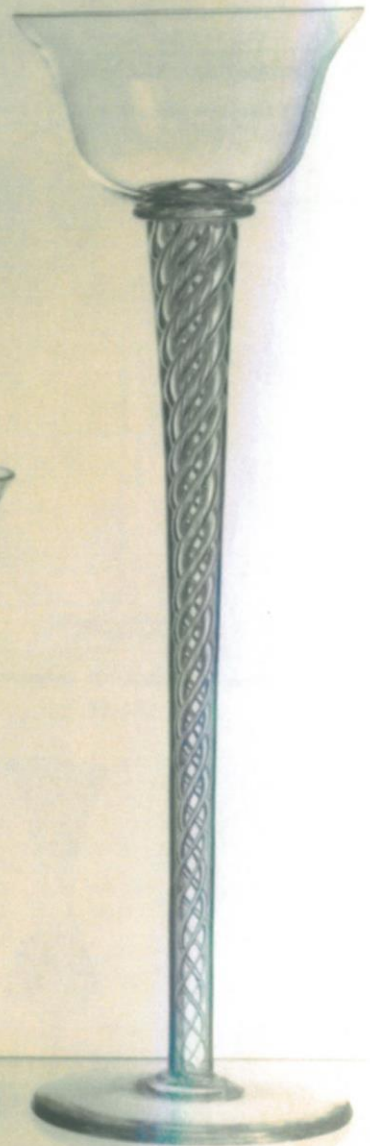
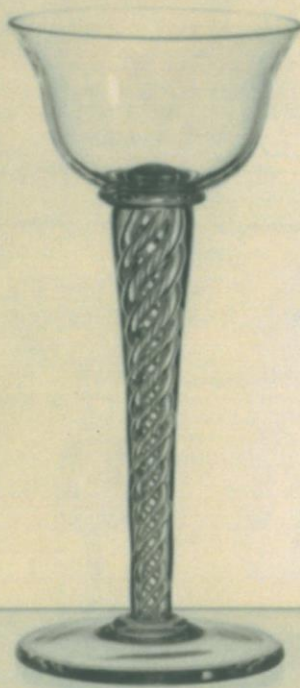
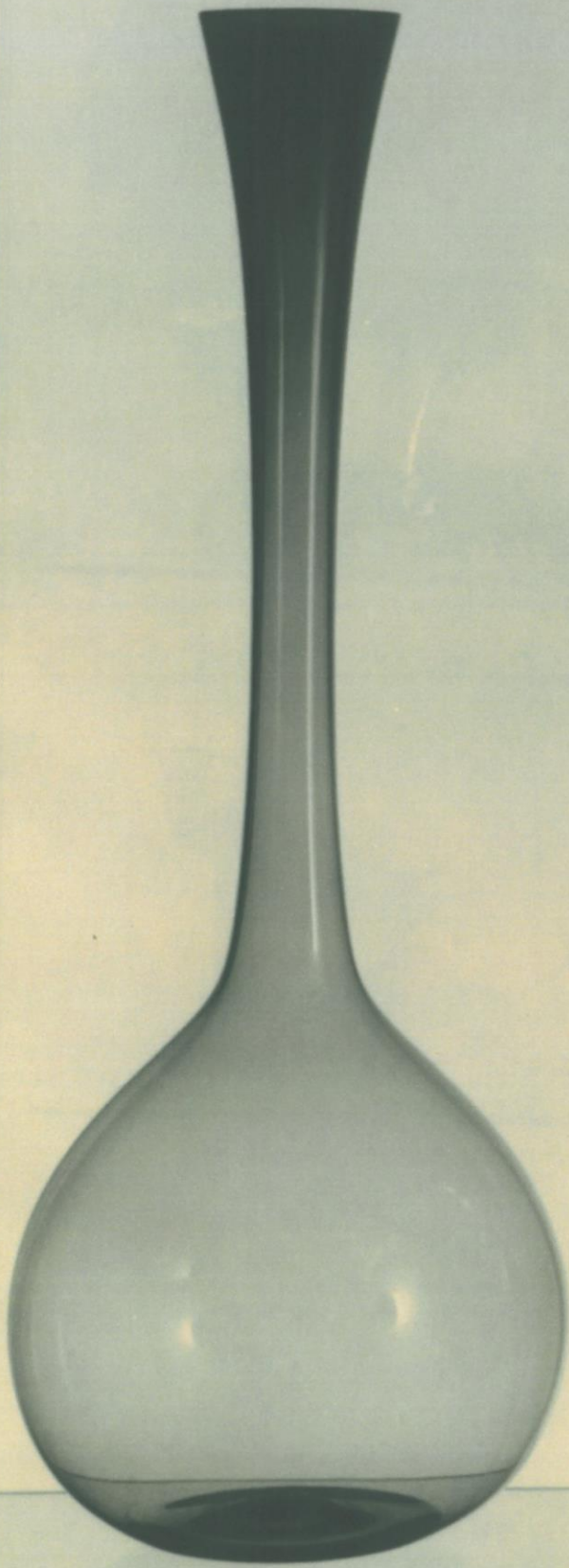
KB 55/44



S 572/1

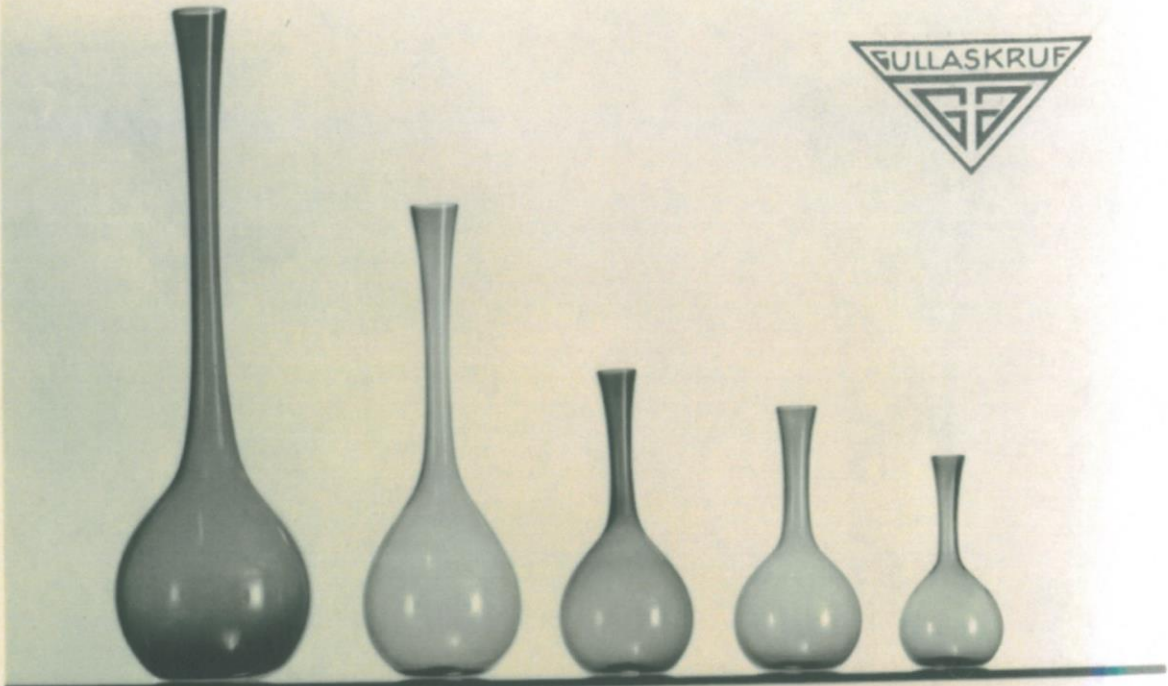


A 561/1

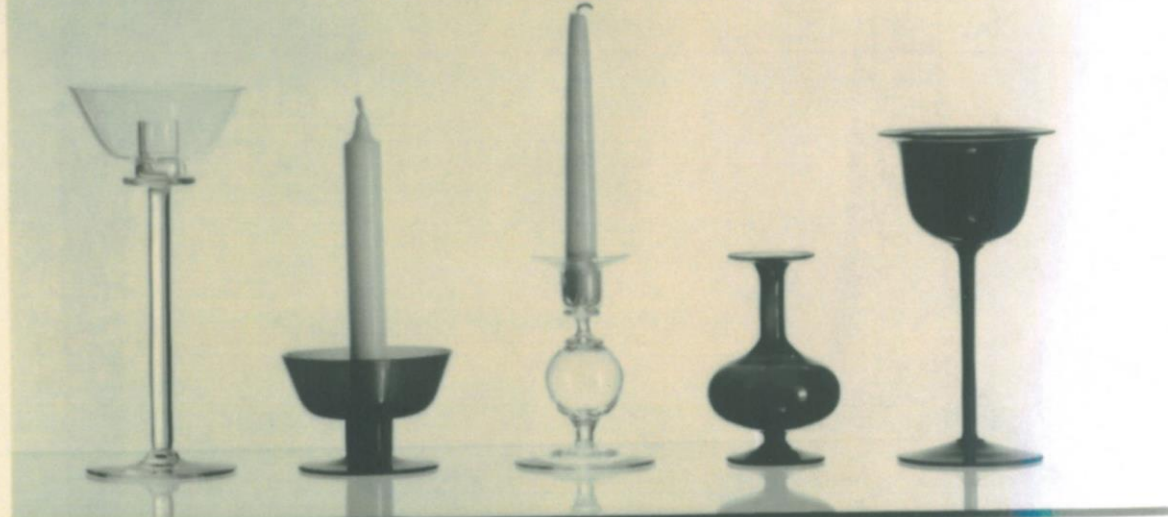


P 524/29

NR 744



P 524/29



P 524/27

P 524/36

P 583/4

P 524/31

P 524/33



P 524/18

P 524/34

P 524/32

P 524/15



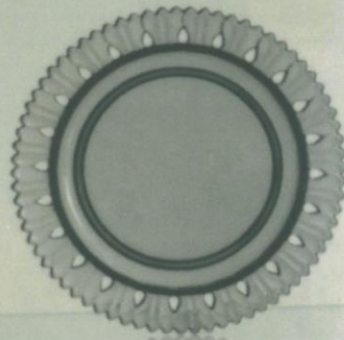
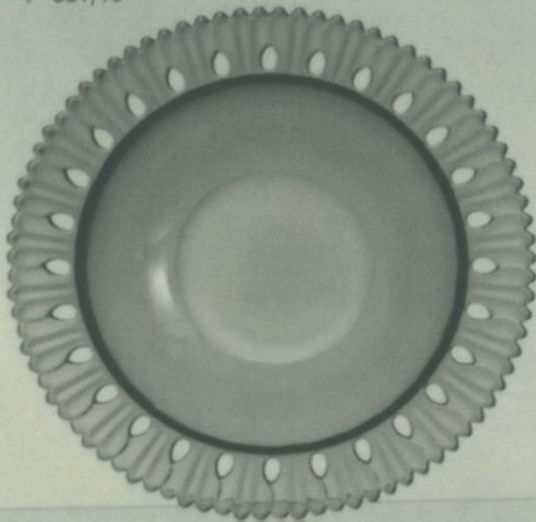
P 551/18



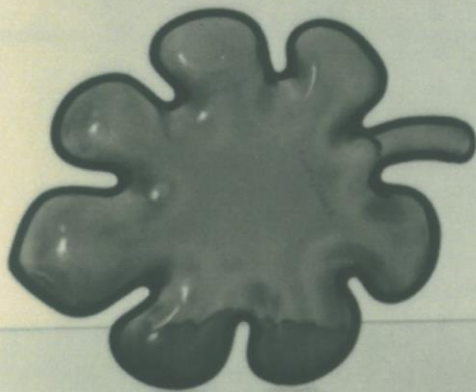
P 551/12



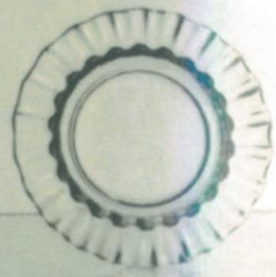
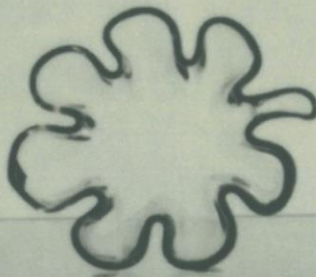
P 559/3



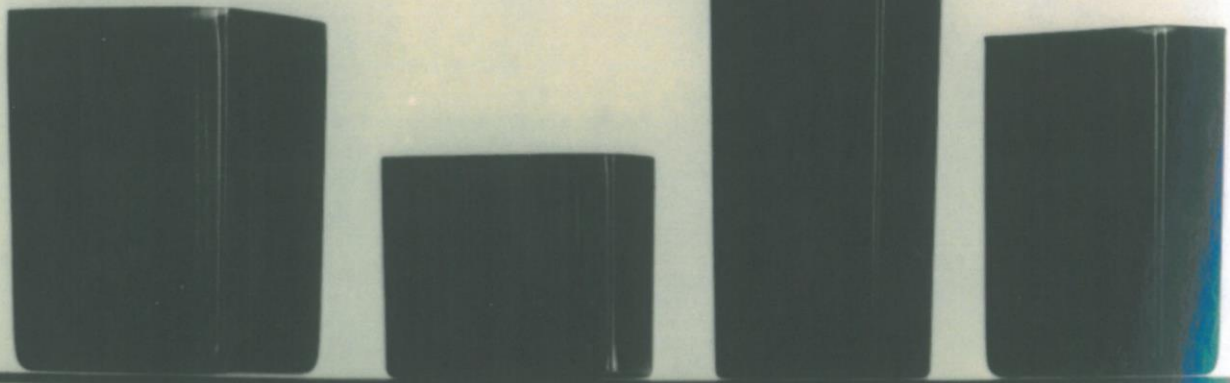
ACANTHUS



P 521/1



REFFLA



ISI

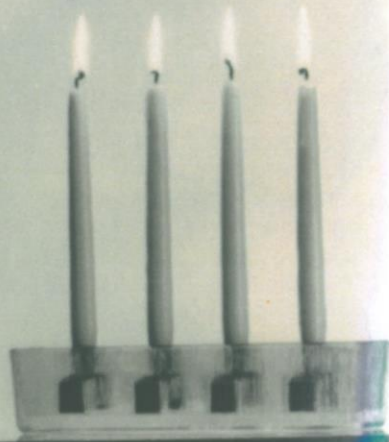
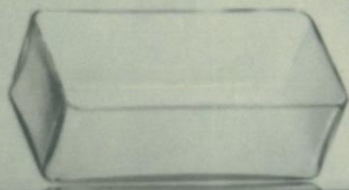


ISI



ISI





ISI



ISIKUB



MINIKUB



A 581/4



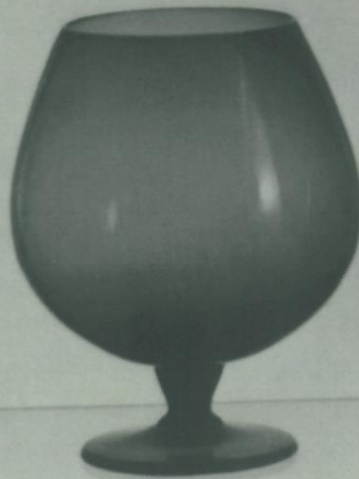
A 581/3



NR 351



OPTIMA





*un. ly. v. o. t.*



S 561/1

V. O.

G 4/42



2019

V.O.P.

351



TUNNELN

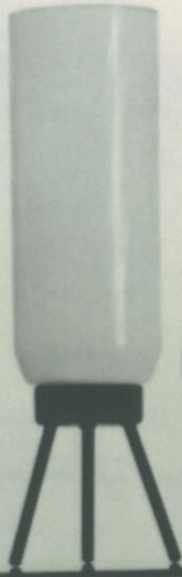
USA

G 42/51

INGRID



VAXJO



A 567/1



A 567/3



PHILIP



669



BELLMAN



REFFLA



1132



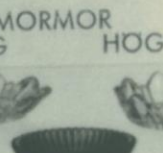
L. A.

1118/65



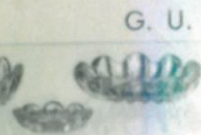
MORMOR  
LAG

1118/50



MORMOR  
HOG

REFFLA



G. U.

H.S./45



H.S./50



ASPO



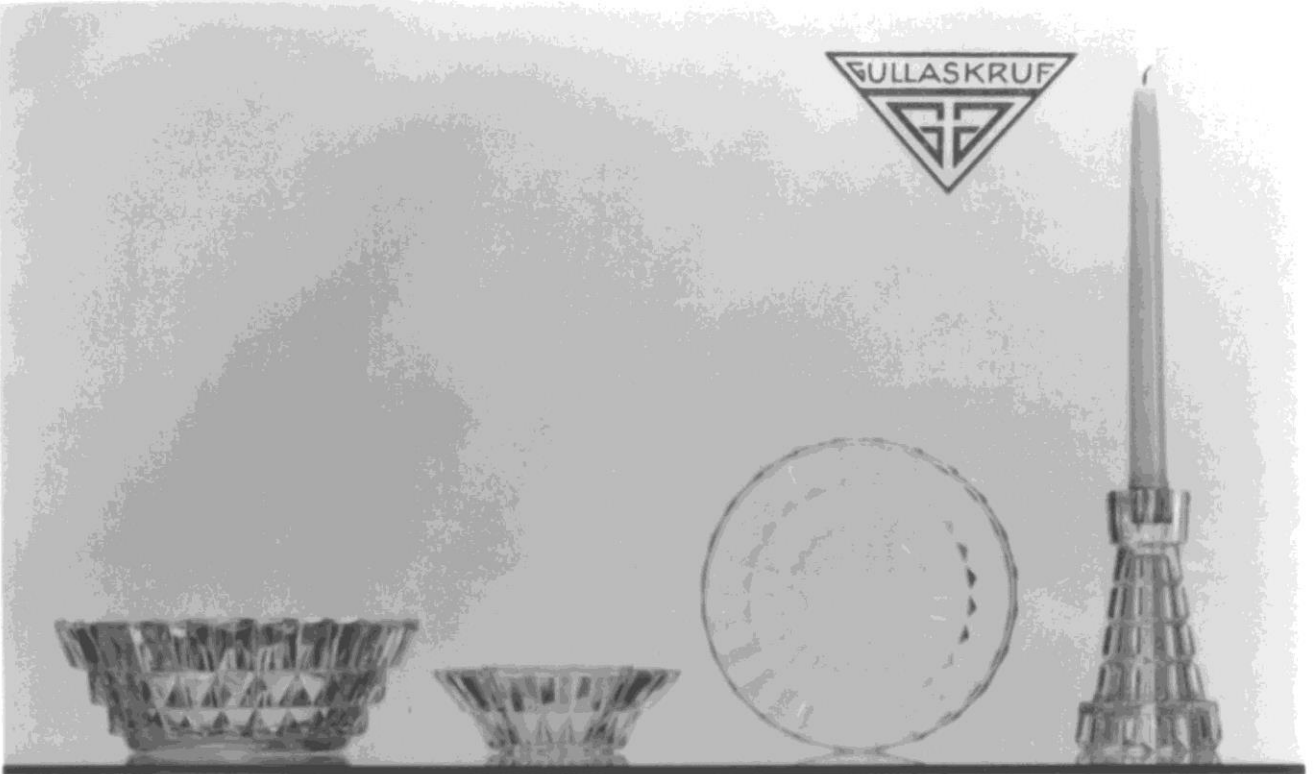
LGB

LK 90



A 571/3

TGB



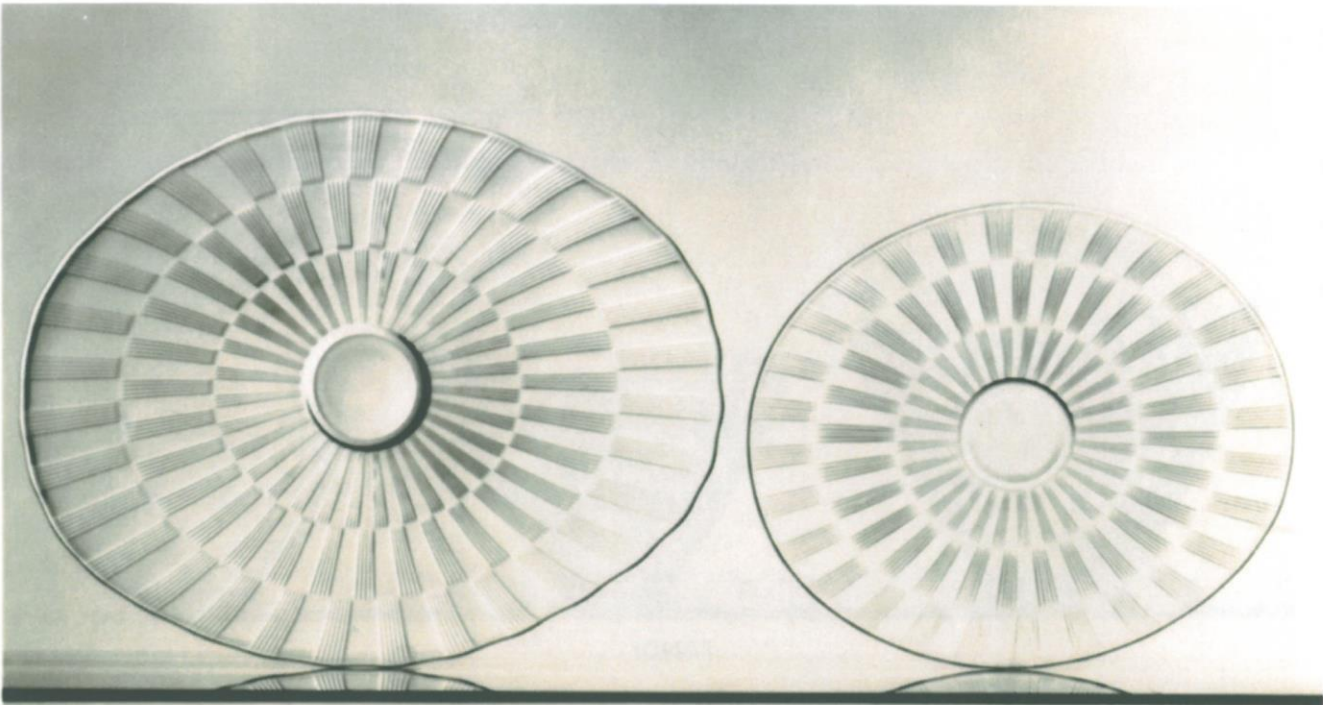
PRISMA



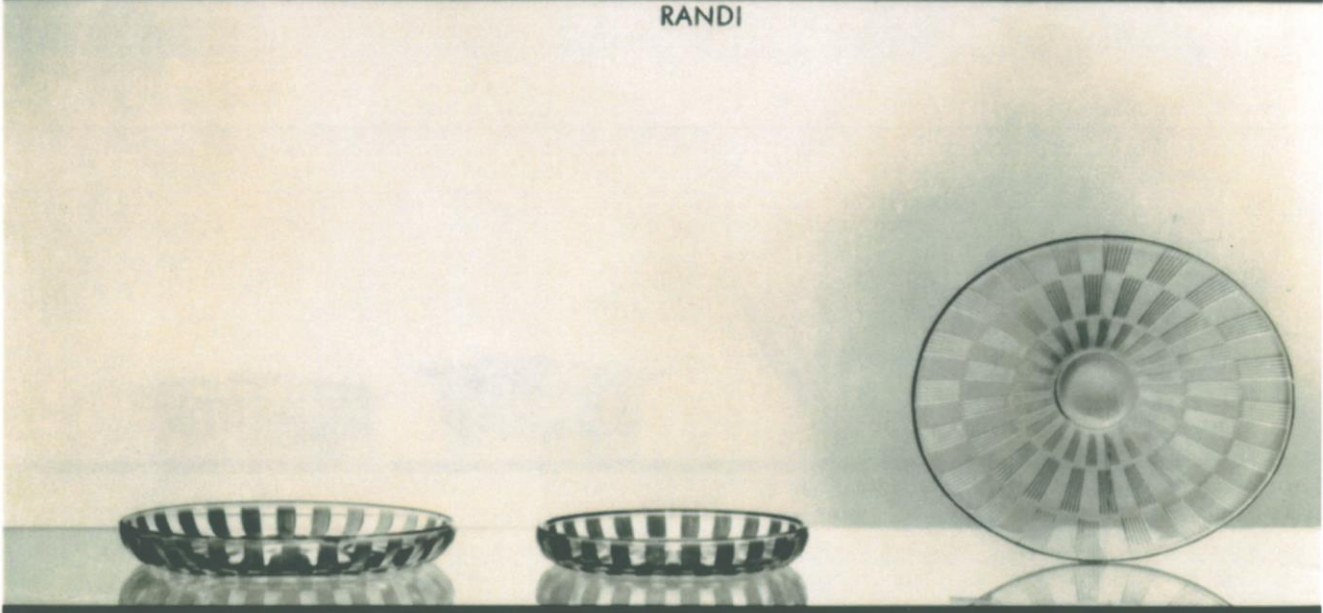
RENÉ



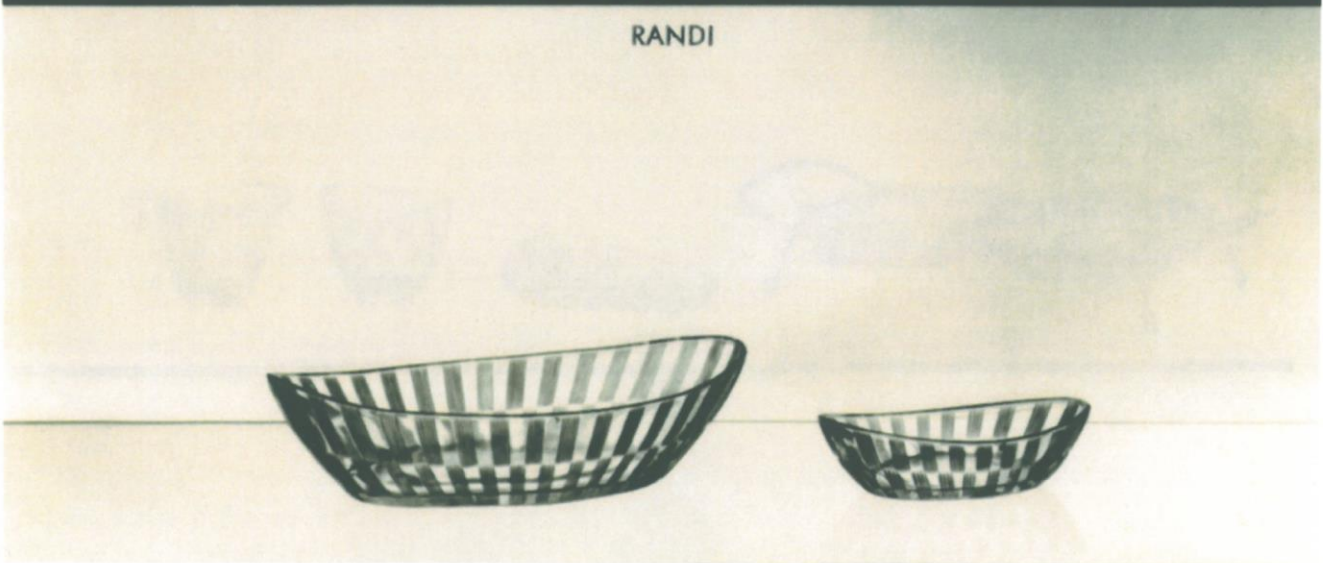
GG

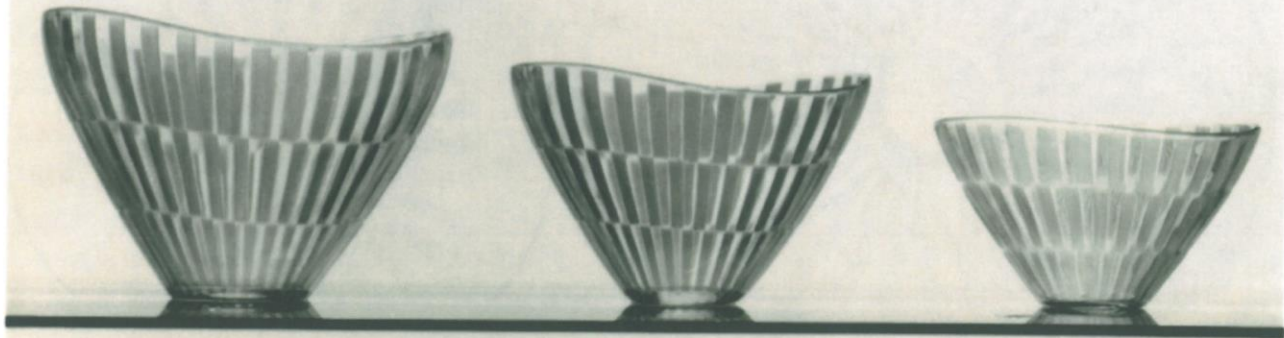


RANDI

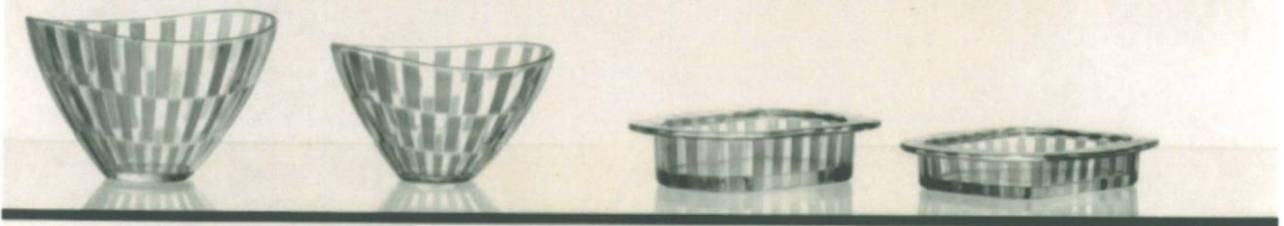


RANDI

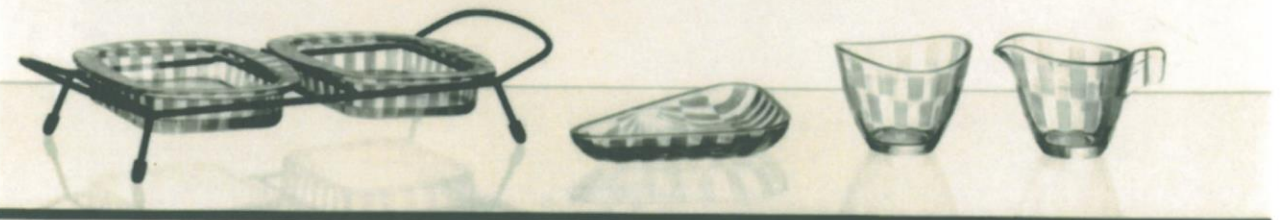




RANDI



RANDI

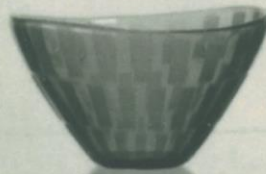
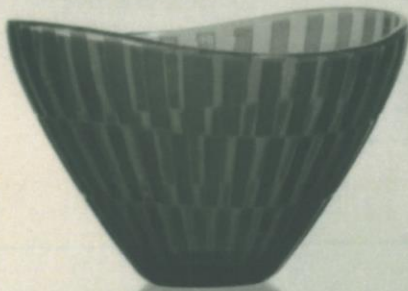


RANDI





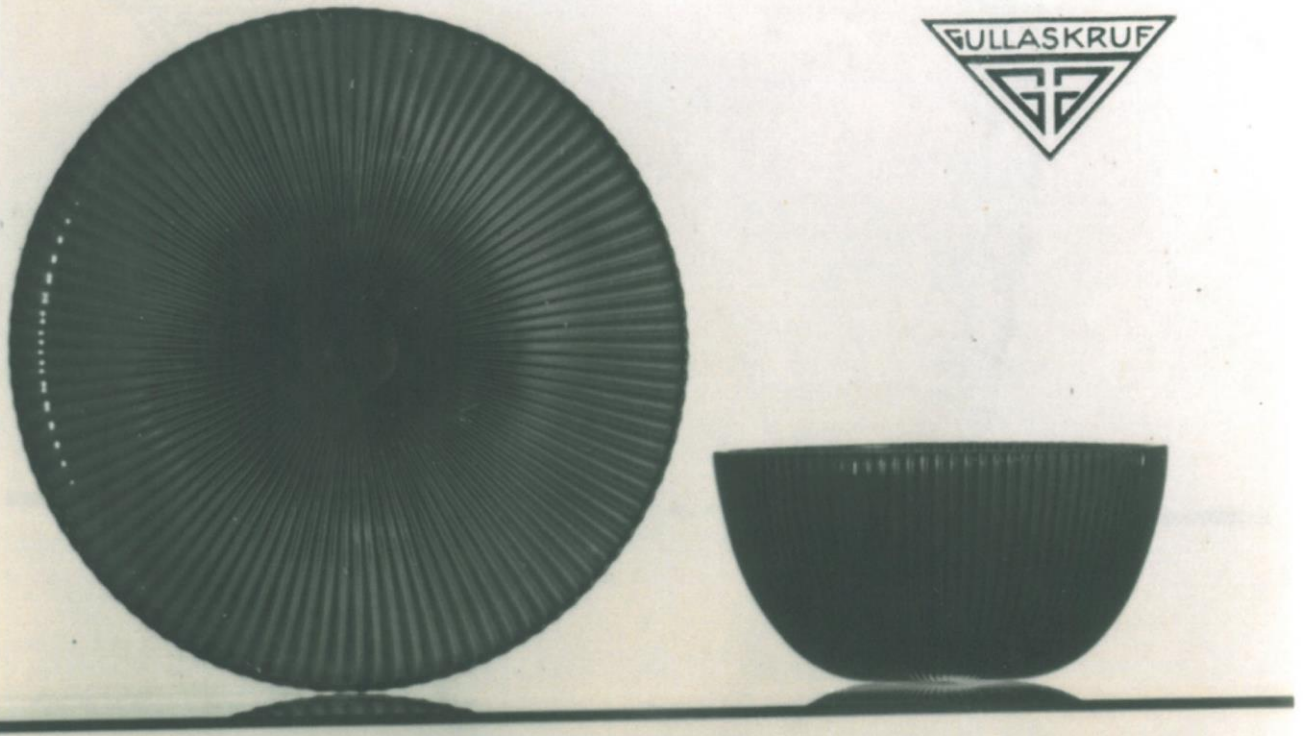
RANDI



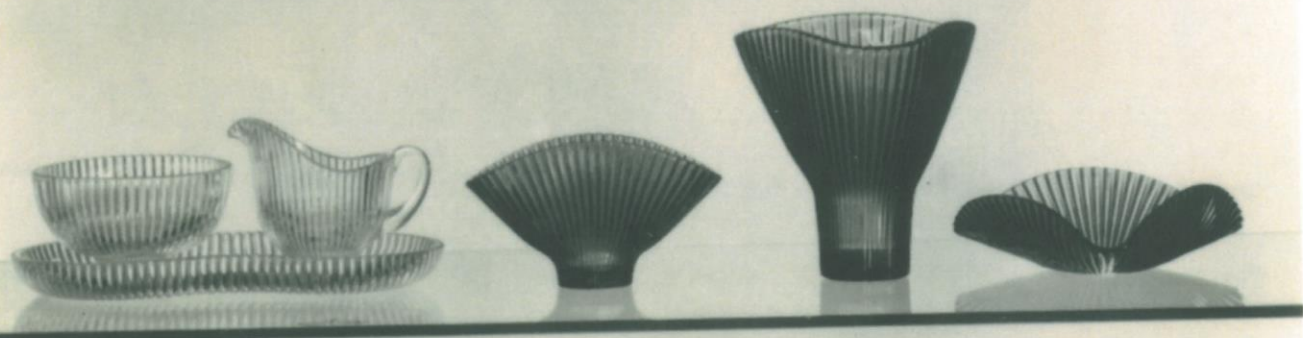
RANDI



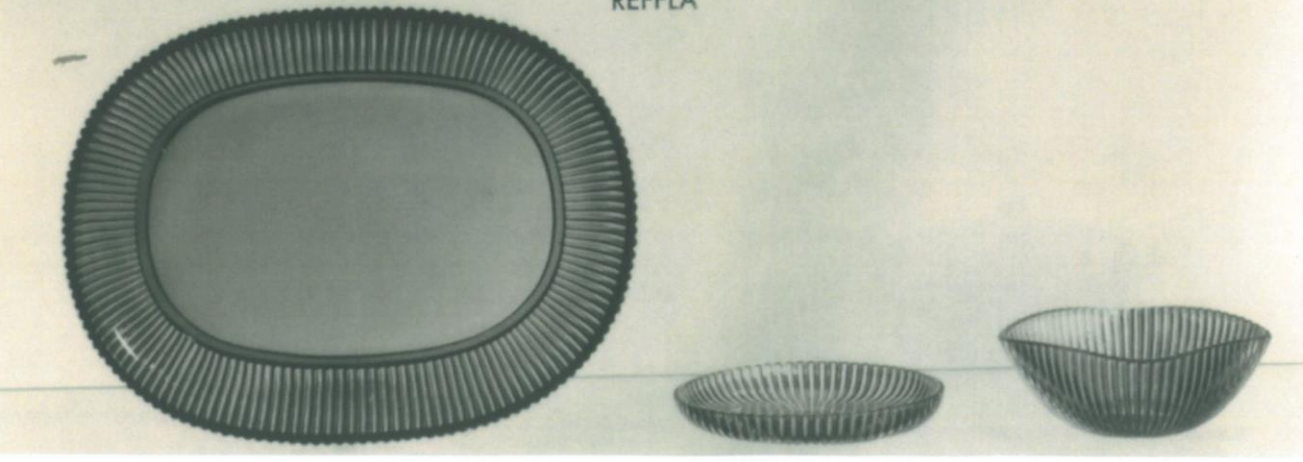
RANDI

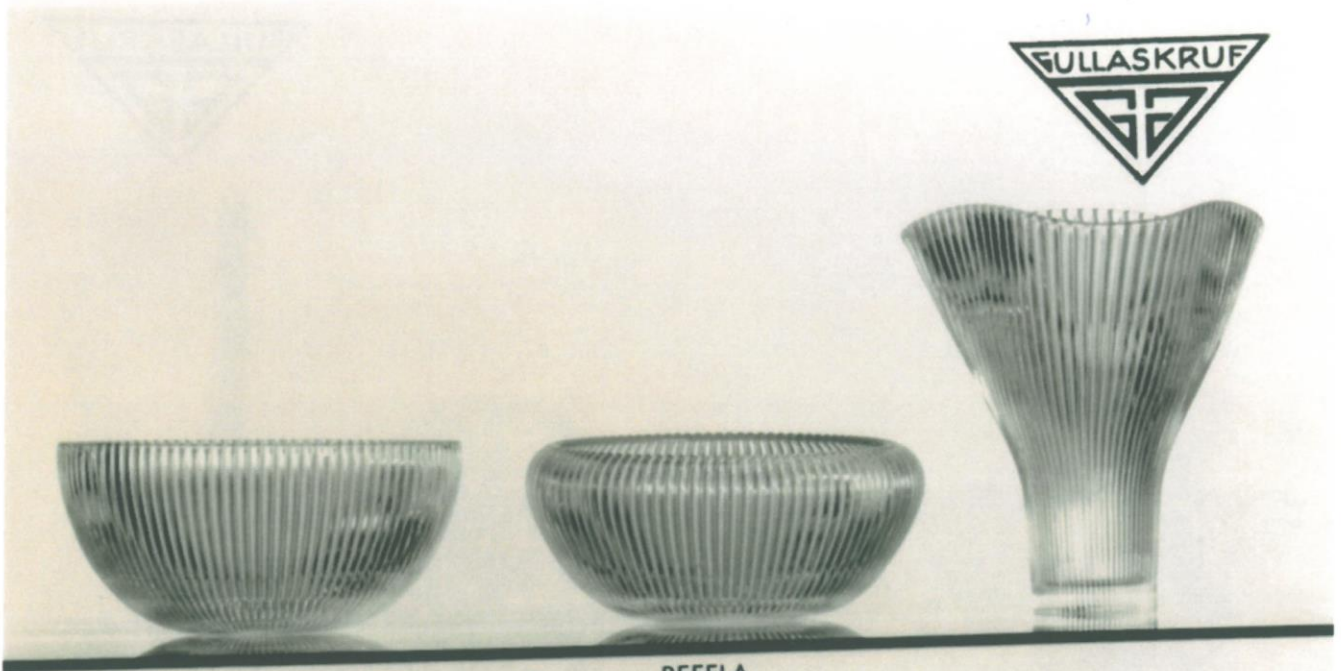


REFFLA

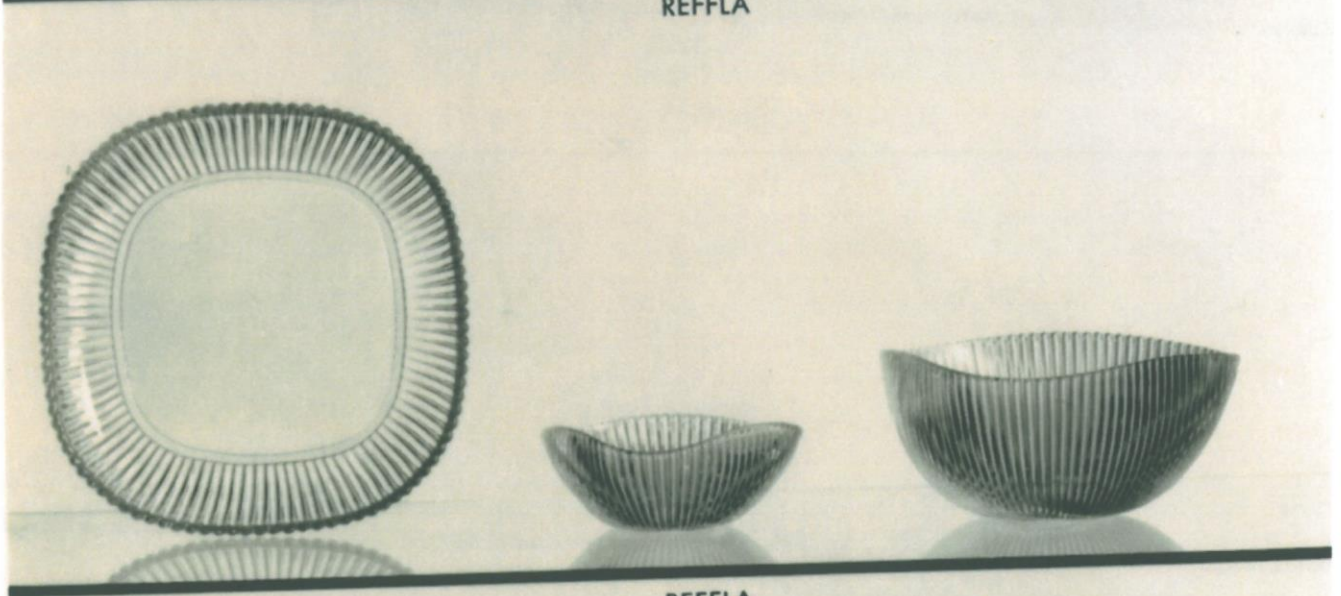


REFFLA

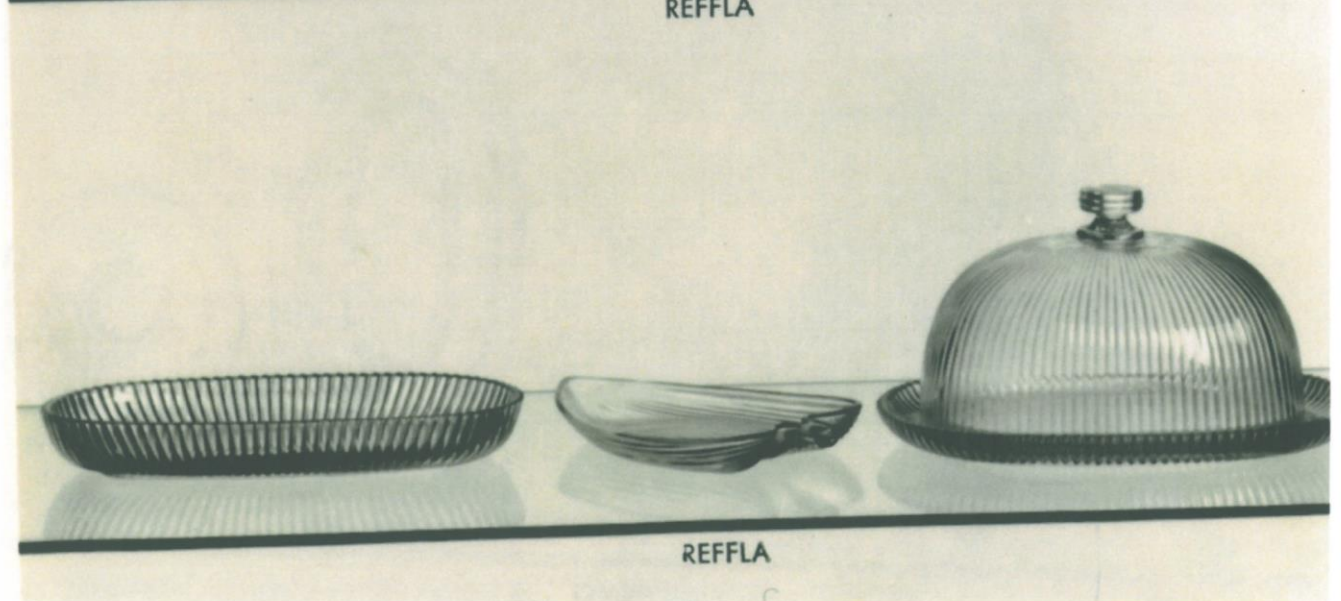




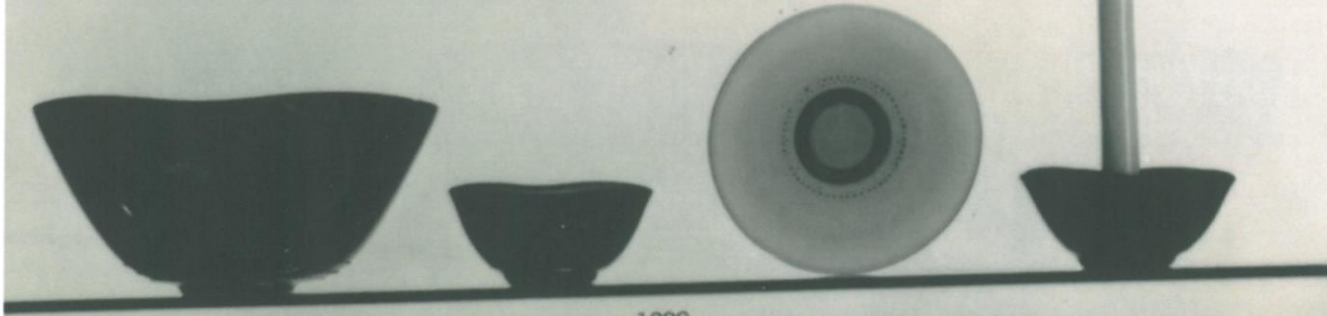
REFFLA



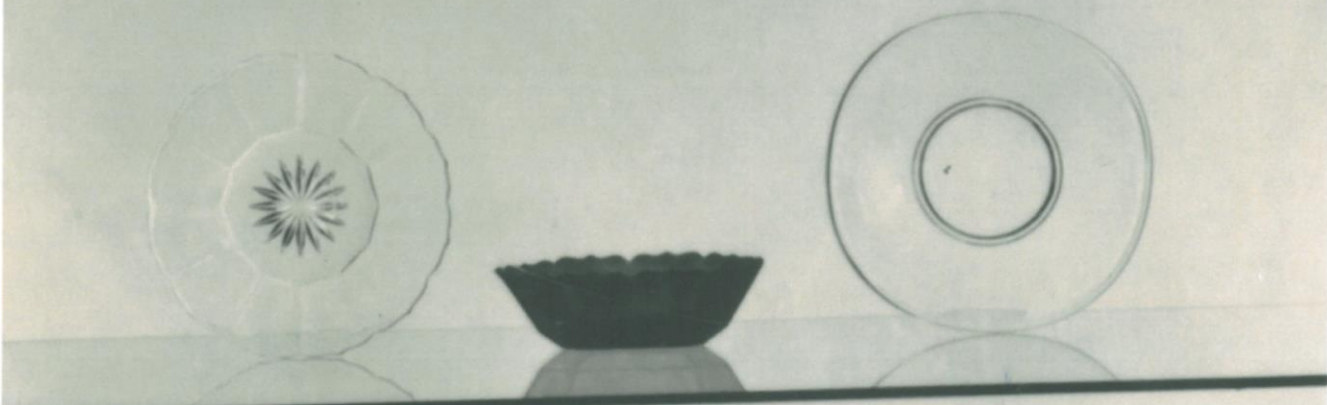
REFFLA



REFFLA



1222

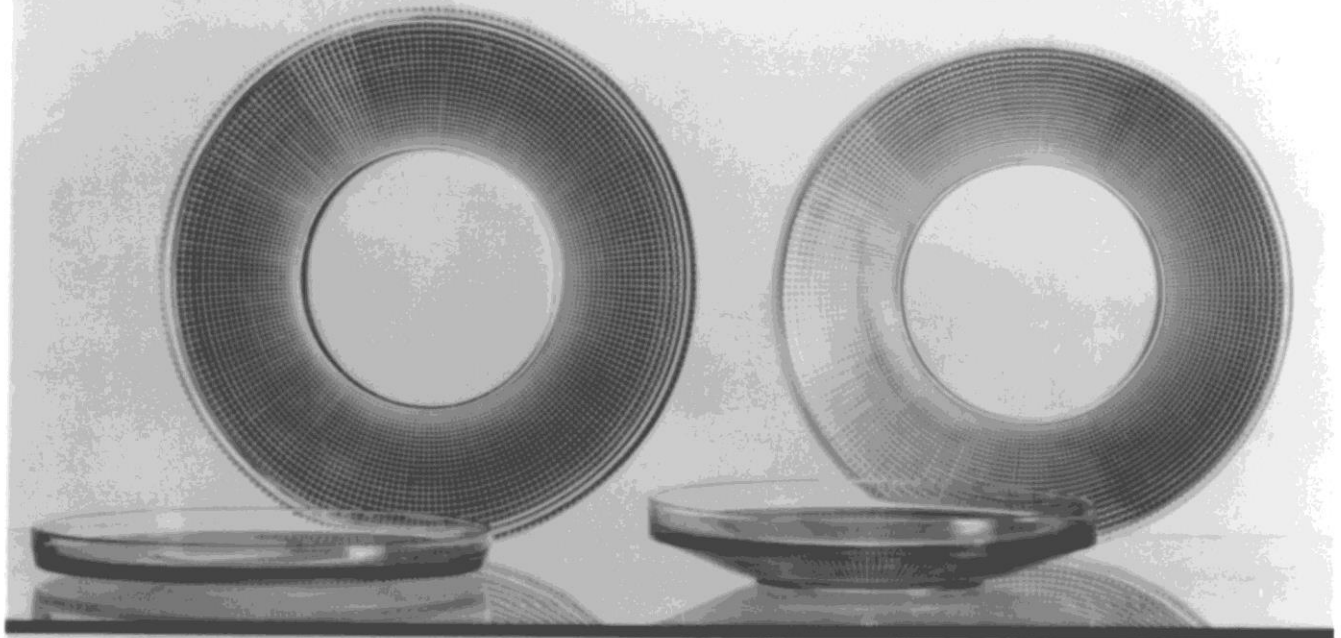


ANTIKFACETT

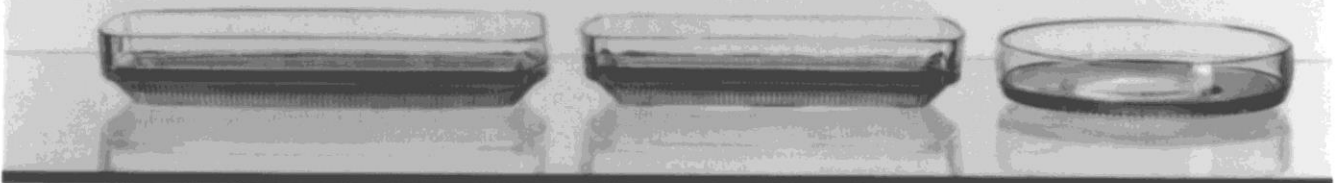
1644



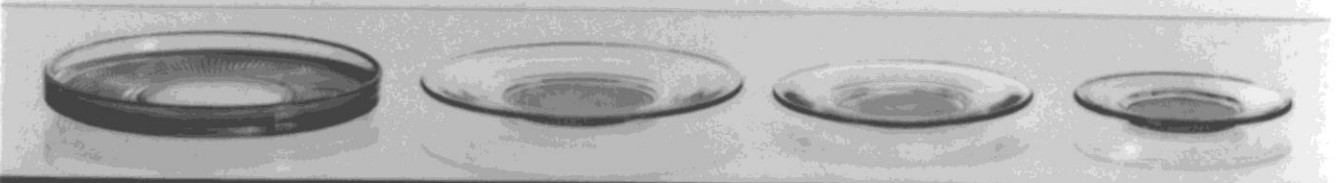
RING



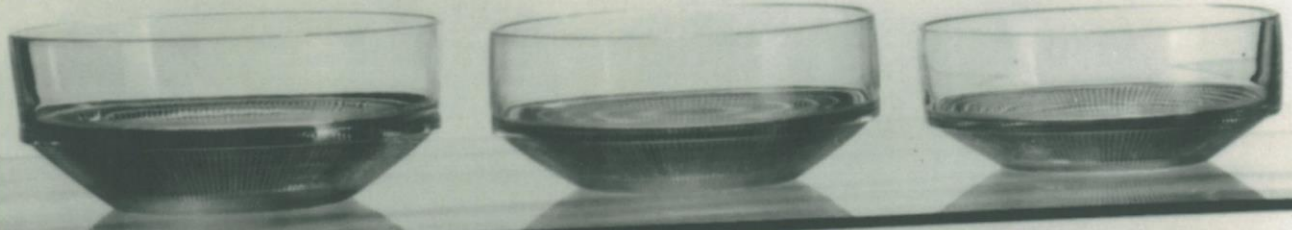
VINETA



VINETA



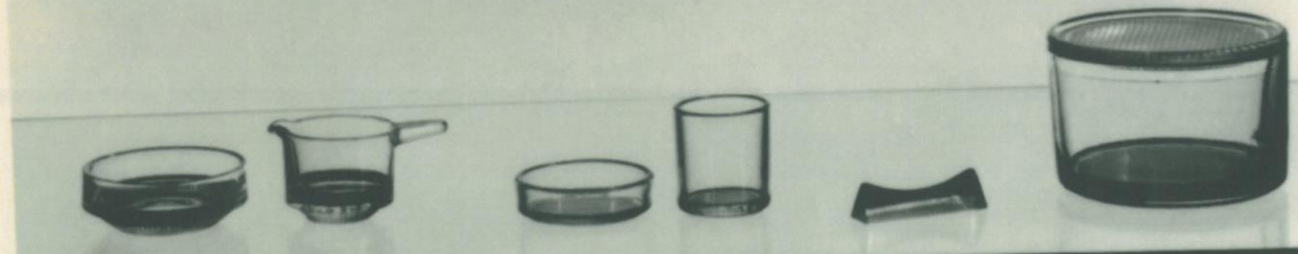
VINETA



VINETA



VINETA



VINETA