

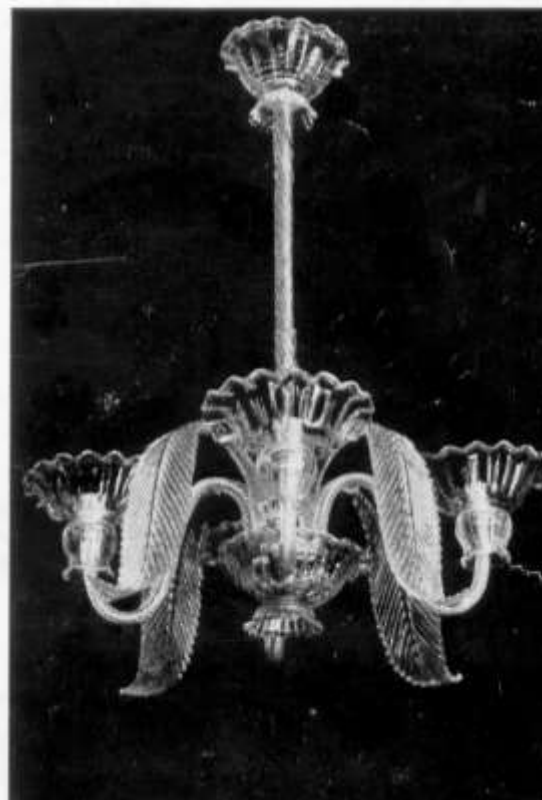


BELYSNINGS-ARMATUR - LIGHTING FIXTURES

KRISTALLKRONOR

i
2-rib

FIorentINA-GLAS



1
1946

FK 148
Diam. 500 mm.

FKB: A SWEDISH PRODUCT

2-rib glas: är ribbat på båda sidor
Dess verkan:
Ljuset brytes dubbelt
Ljuset bländar ej
Ljuset ger festlig glans åt armaturen

is ribbed on both sides
Its effects:
The light is refracted twice
The light does not dazzle
The light makes lamps bright & gay

FIorentina: en STIL, vilken kan kallas klassisk
en TYP, vilken motsvarar moderna krav
en KVALITET som uppnås genom specialtill-
verkning av glas med särskild sammansättning

a STYLE, which is classical
a TYPE for modern & exacting people
a QUALITY obtained by specially for the
purpose produced glass

plissé glas: vågiga skålar tillverkade efter nya metoder

ondulated bowls produced according to entirely
new methods

LOTUS -
-armaturer äro graciösa, tidsenliga och passa för
alla miljöer
innerskålar i ornamentglas ge stor lyster
innerskålar i gult glas ge varm färgton

-lighting fixtures are graceful and suitable for
all kinds of furniture
innerbowls of ornament-glass give brightness
innerbowls of yellow glass give a warm, pleasant
shade

FK-BELYSNING
Dr FREDRIK KURZ

NYBRO - Tel. 645

Försäljning och Export: **NORSTRÖM & ROBERT**

Norrlandsgatan 3, STOCKHOLM

Tel. 10 99 99, 11 33 20

Cable address: Norrobart

2

*X=Tillverkade
vid Elmg Glasbruk*

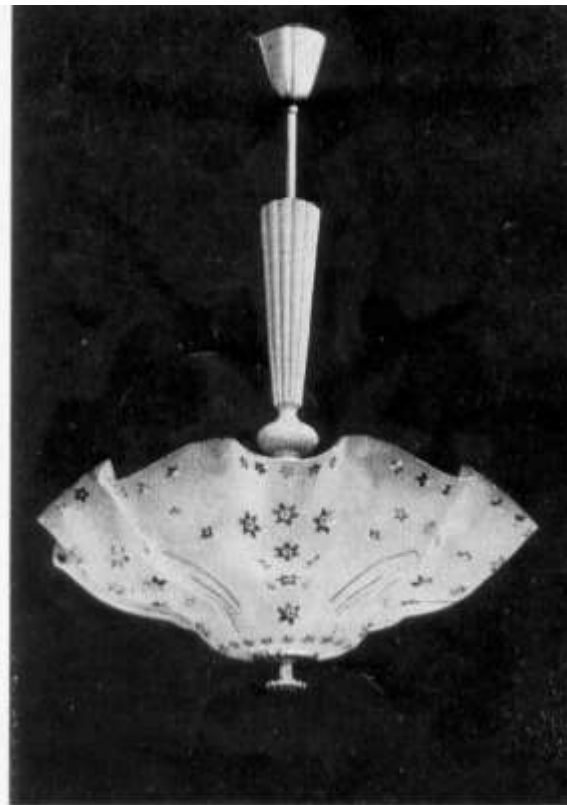
Printed in Sweden. JOHANSSON & BERGQVIST, NYBRO



FK 146

Diam. 750 mm.

Kristall-Krona i **2-rib** FIORENTINA-glas



FK 131

Diam. 550 mm. Ornament i Innerskål

LOTUS-lampa i **plissé**-glas



FK 145
Diam. 750 mm.



FK 147
Diam. 750 mm.



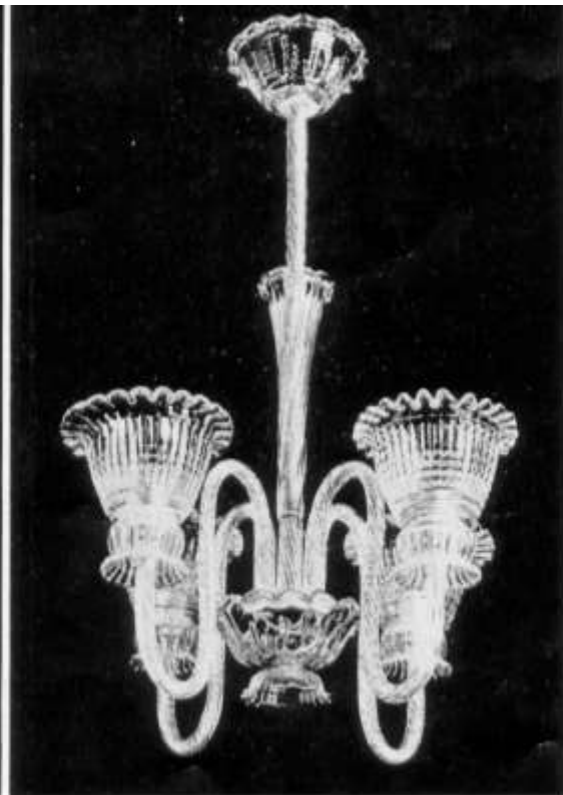
FK 149
Diam. 500 mm.

Kristall-Kronor i **2-rib**



FK 150

Diam. 500 mm.



FK 153

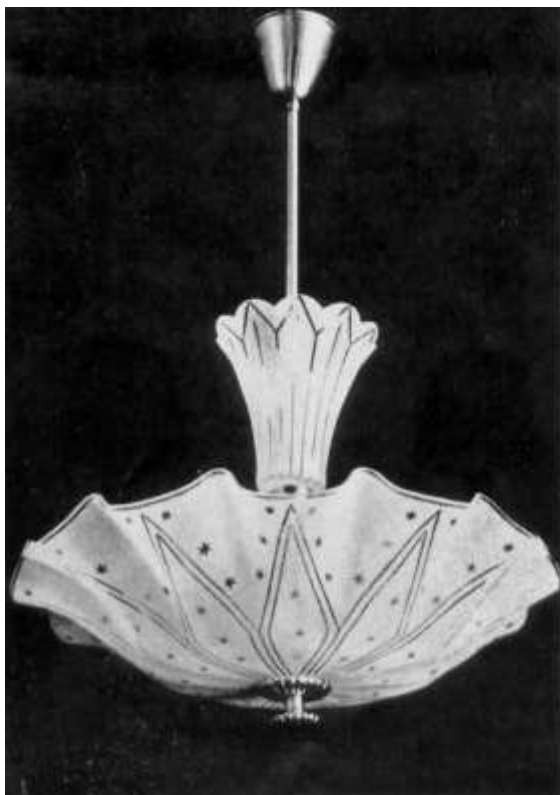
Diam. 450 mm.



FK 152

Diam. 450 mm.

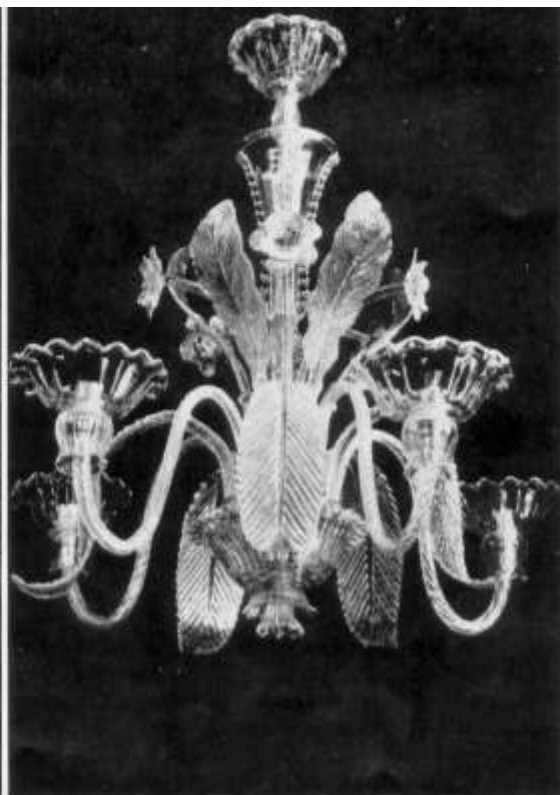
FIorentINA-glas



LOTUS

FK 124

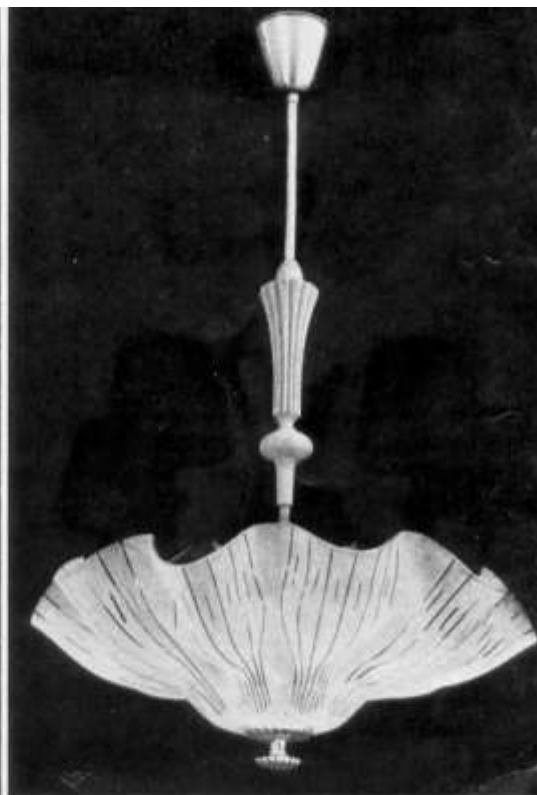
Diam. 550 mm.



FIorentina

FK 144

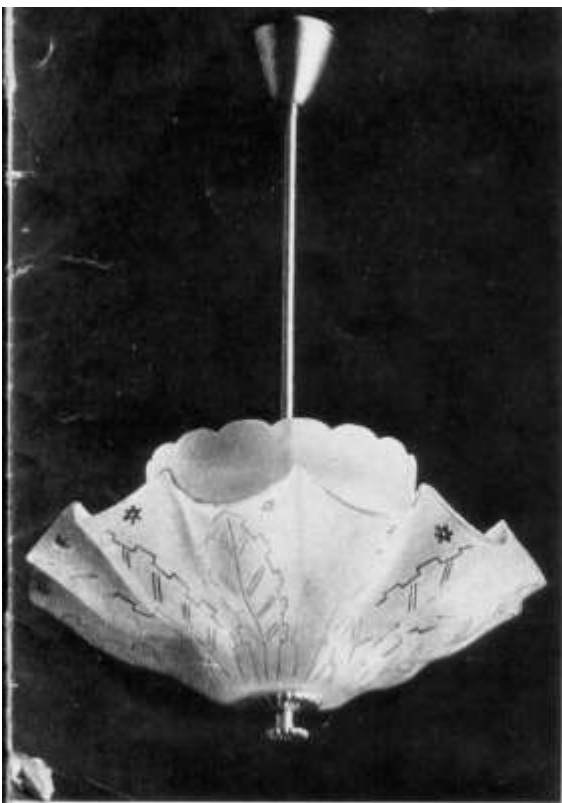
Diam. 800 mm.



LOTUS

FK 119

Diam. 550 mm.



LOTUS

FK 129

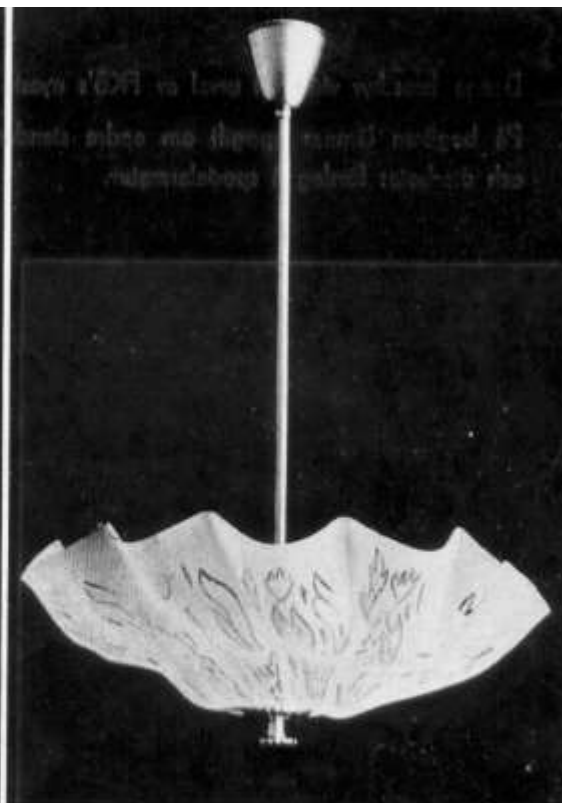
Diam. 490 mm.



LOTUS

FK 122

Diam. 600 mm.

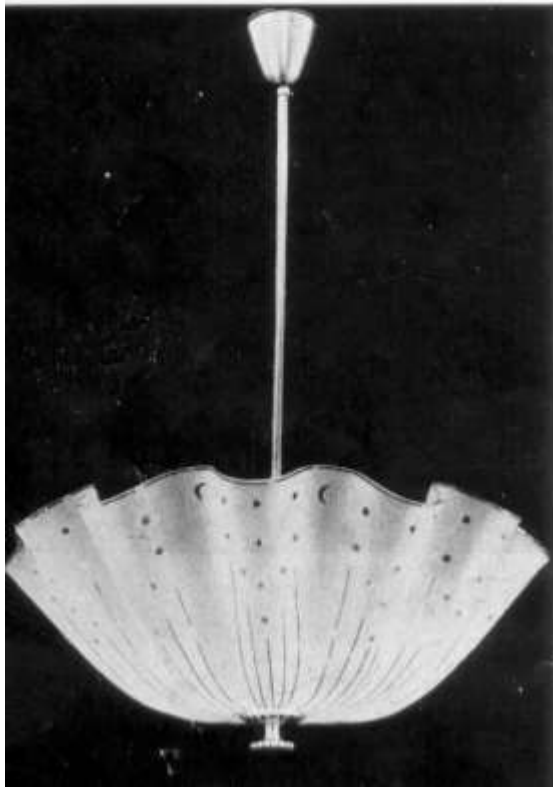


LOTUS

FK 139

Diam. 540 mm.

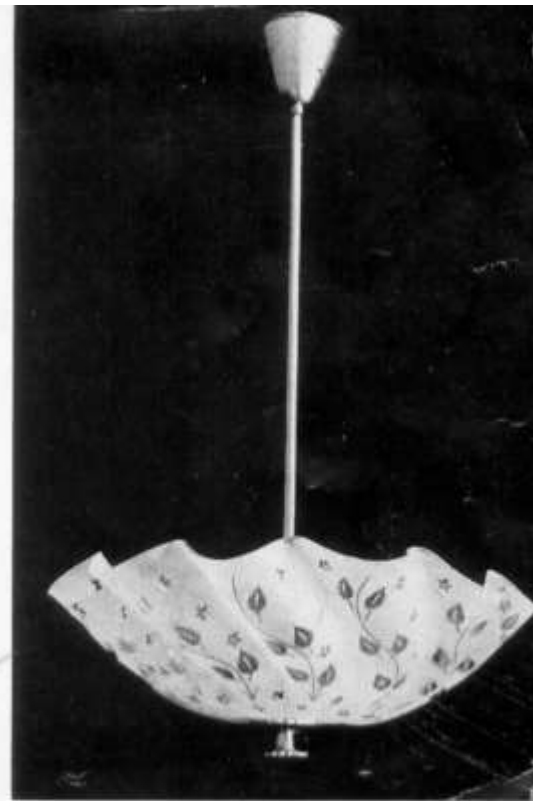
Denna broschyr visar ett urval av FKB's nyaste typer.
På begäran lämnas uppgift om andra standardtyper
och utarbetas förslag å specialarmatur.



FK 123 Diam. 390 mm.

FK 125 Diam. 510 mm.

FK 126 Diam. 600 mm.



FK 137 Diam. 480 mm.

LOTUS LAMPOR
i
plissé-glas