

Oktober 1944

AKTIEBOLAGET
ÅFORS GLASBRUK
EMMABODA
SWEDEN

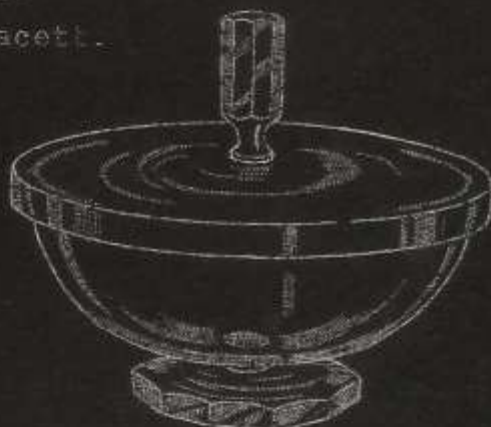




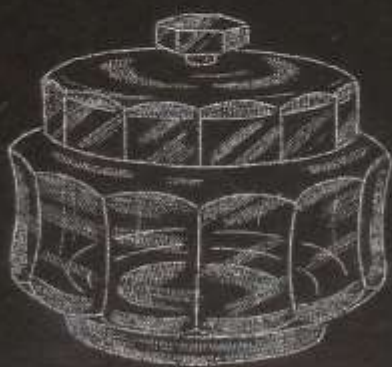
O 18/facett.



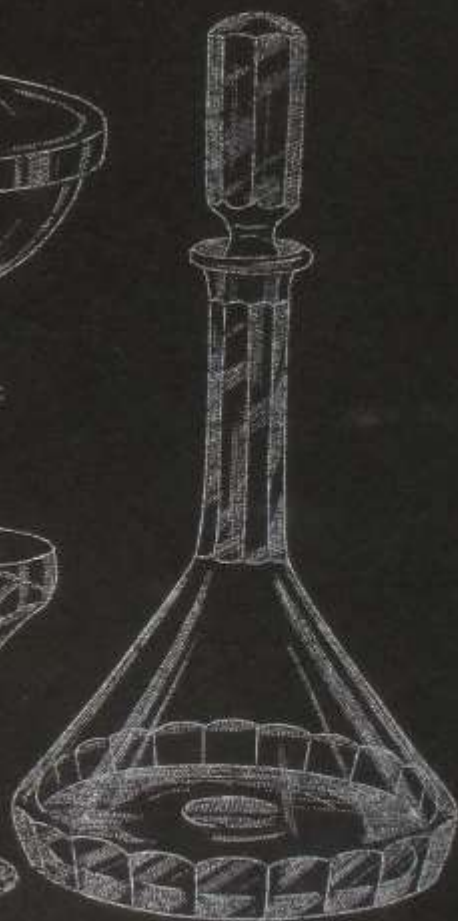
O 22/facett



O 20/facett



O 19/facett.



O 15/facett.



O 25/facett
180 m/m



O 27/facett
200 m/m



O 23/facett.
180 m/m.



O 26/facett,
280 m/m

A/B. AFORS GLASBUD.



0 35
130 m/m



0 33/ 250 m/m



0 34
190 m/m



0 32/facett
235 m/m



O 45/facett
40 cl.



O 47
175 m/m



O 45/facett
7 1/2 cl.



O 44/W 6.
175 m/m



O 47
320 & 320 m/m



o 48/s15



o 48/s 15.
40 cl.



o 50/facett
32 cl.



o 49/s 14
40 cl.



0 52/S 16
40 cl.



0 55/Vilma
Gulets.



0 53
40 cl.



O 58/S 17
70 cl.



O 59/S 17
65 cl.



O 60/S 17
57 cl.



Grogglas O 59/S 17
45 cl.



22 cl.



0 31/8 opt.

100 cl.



100 cl.

0 61



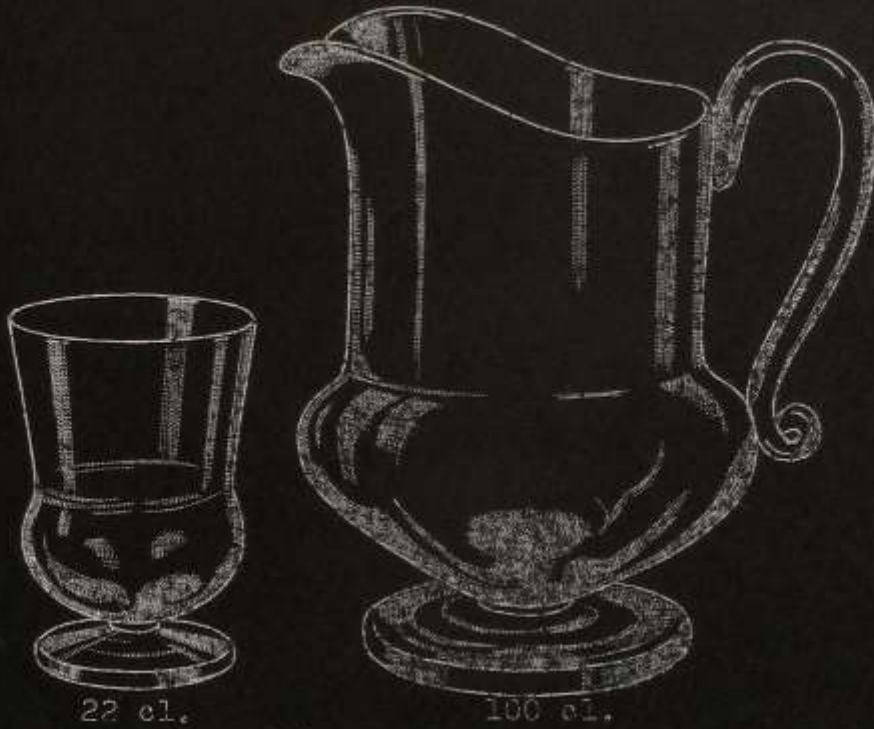
22 cl.



100 cl.
0 30/8 opt.



22 cl.



22 cl.

100 cl.

0 65/opt.



22 cl.

100 cl.

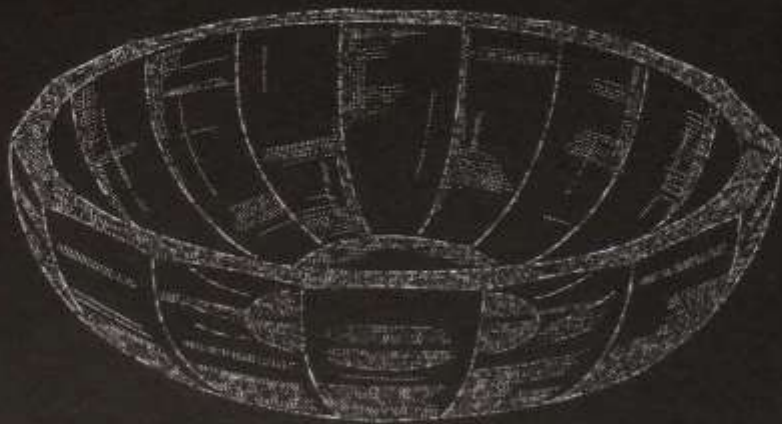
0 64/opt.



0 67/011v
150 m/m



0 67/s 50
200 m/m



0 86/200st
200 m/m



0 68/5.
110 m/m



0 68/s 1.
110 m/m



0 73/Falk,
160 m/m

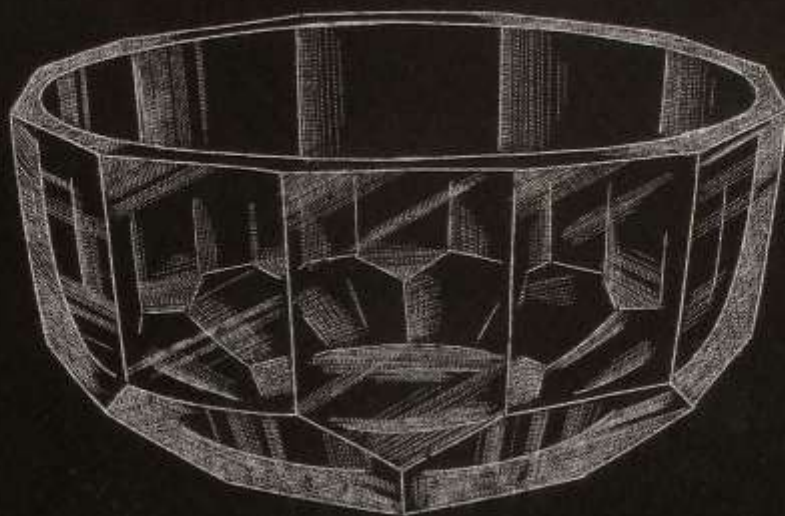


0 67/Polo
150 m/m
(gulets)

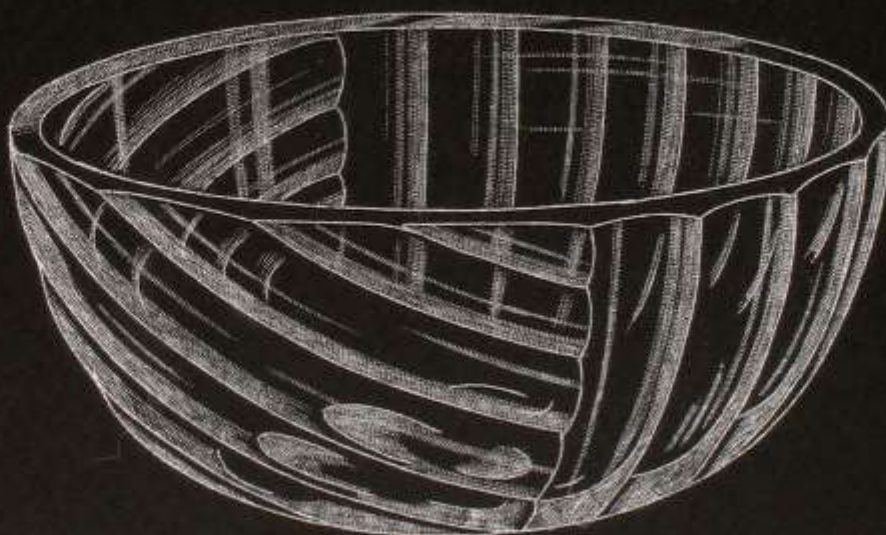
A/B. ÅFORS GLASBRUK.



o 68/w 10
200 m/m.



0 76/facett.
165, 180 & 210 m/m.



0 76/s 2.
165, 180 & 210 m/m

4/2. АВОРИС ГЛАЦЕРИТ.



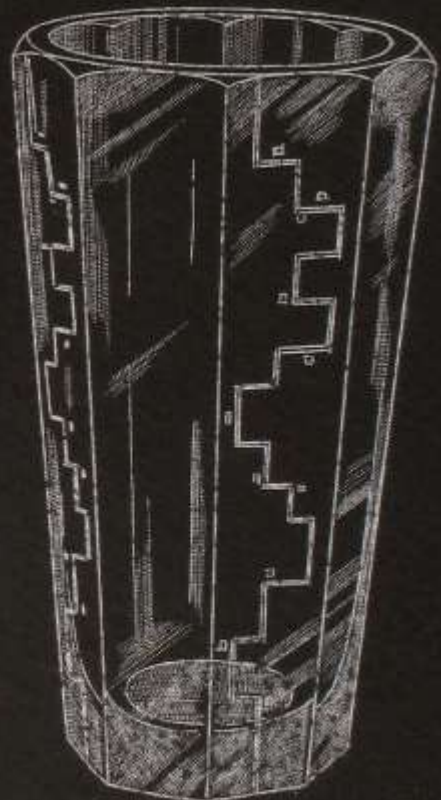
O 83/S 46
100 m/m



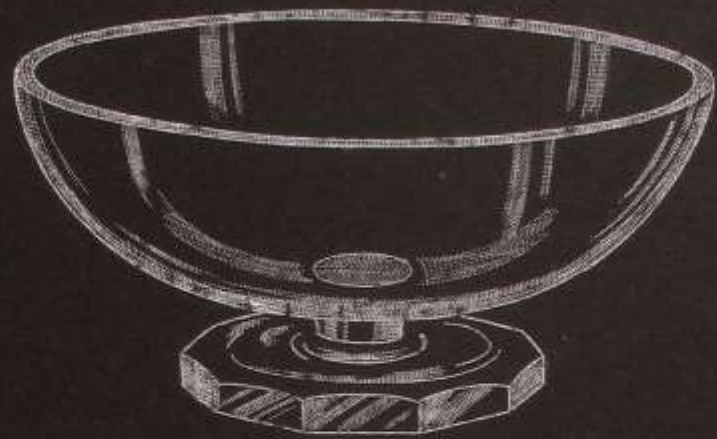
O 83/O11V
100 m/m



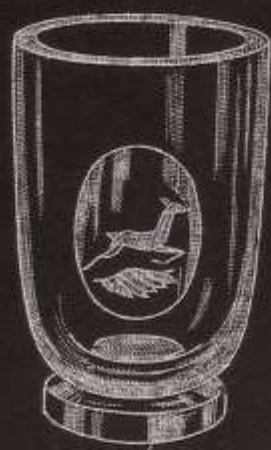
D 302/S 52
150 m/m



S 102/S 51.
175 m/m.



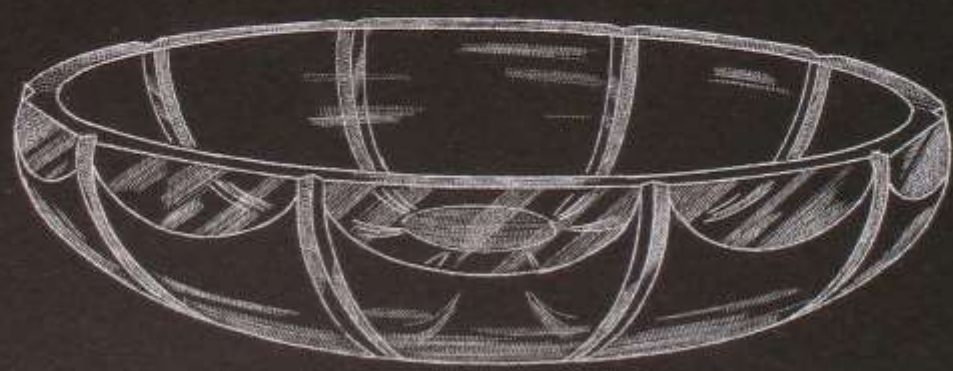
0 91/facett
150 & 200 m/m.



0 99/Hind
95 m/m



0 83/W 2.
100 m/m



0 80/s 11.
160 & 230 m/m.



0 100/Svala
70 m/m



0 101/Svala.
70 m/m



Askfat 3000/Svala

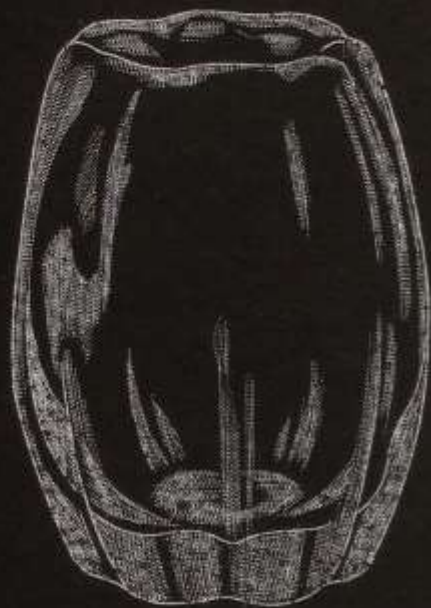


3000/Svala



0 102/Svala
70 m/m

A/B. ÅFORS GLASERUK.



O 105
130 m/m.



O 107
120 m/m



O 104
140 m/m



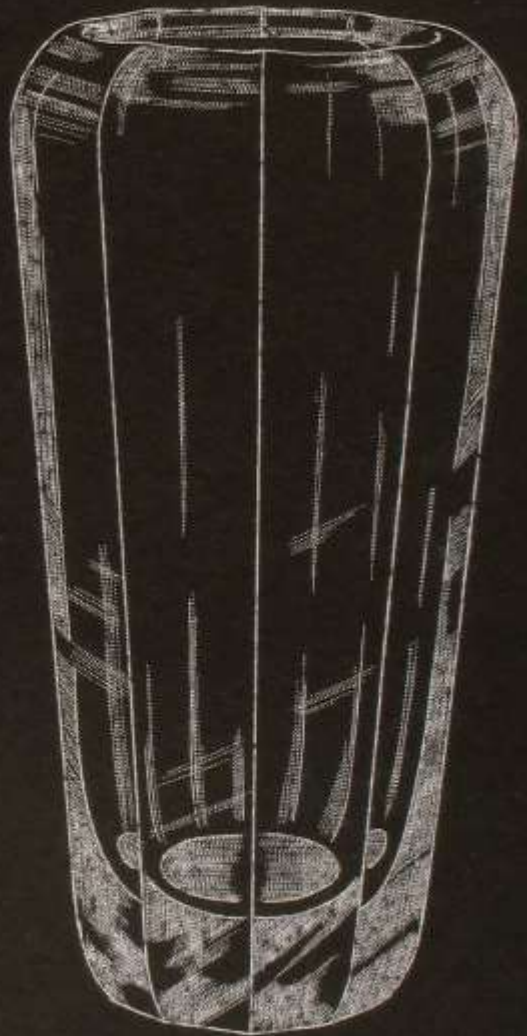
O 106
170 m/m



O 116/Oliv
175 m/m



O 113/S 46.
225 m/m.



O 115/facett
250 m/m



O 162/s 53
225 m/m



O 118/facett
100 m/m.



O 121/01iv
200 m/m



O 123/R 52
150 m/m



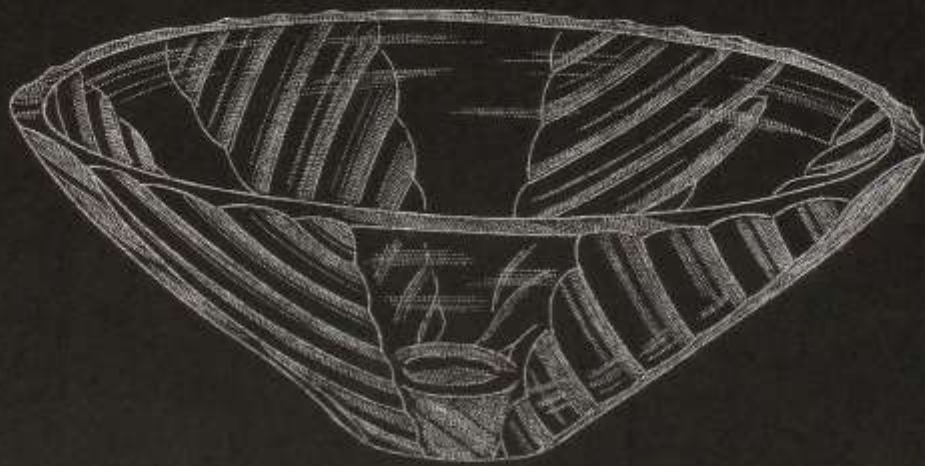
O 122/facett.
25 m/m



0 117/facett.
160 m/m



0 127/facett



0 120/oliv
260 m/m.



0 134/facett.
150 m/m



0 134/oliv
150 m/m



0 128/oliv
210 m/m.



0 146/3 facett.
125 m/m



0 145/Fj811
130 m/m

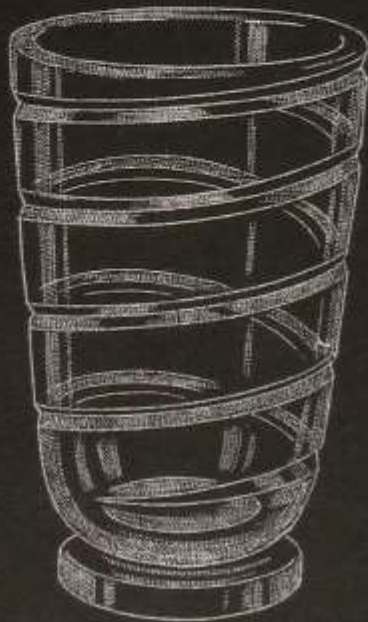


0 147/s 28.
110 m/m.

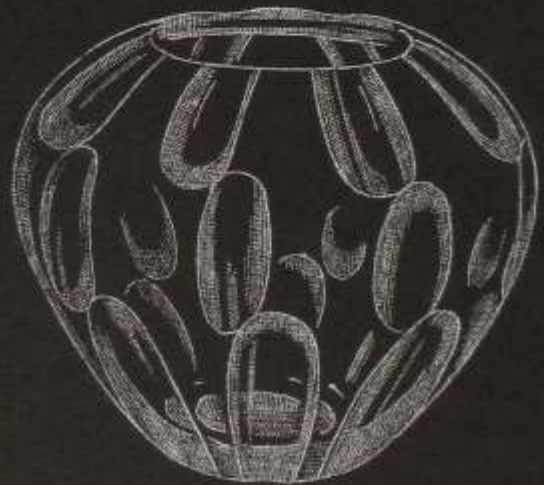
A/P. ΑΡΧΗΣ ΓΛΑΥΚΟΥ.



0 148/s 30.
175 m/m



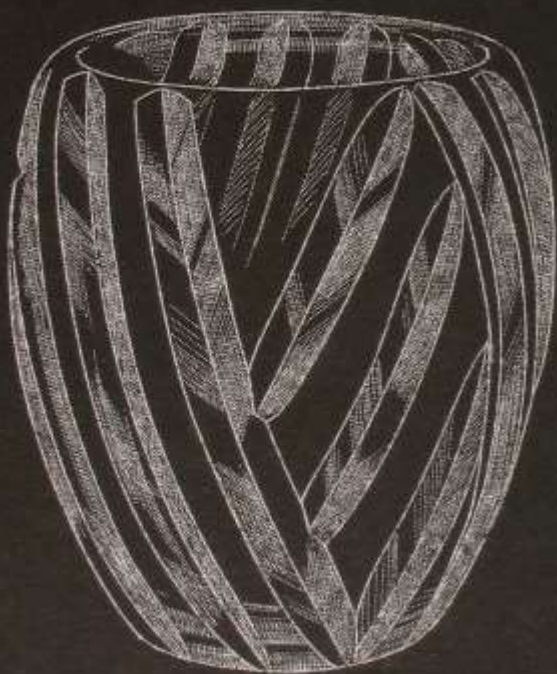
0 149/s 31.
170 m/m.



0 148/s 29
115 m/m.



0 150/S 34.
125 m/m.

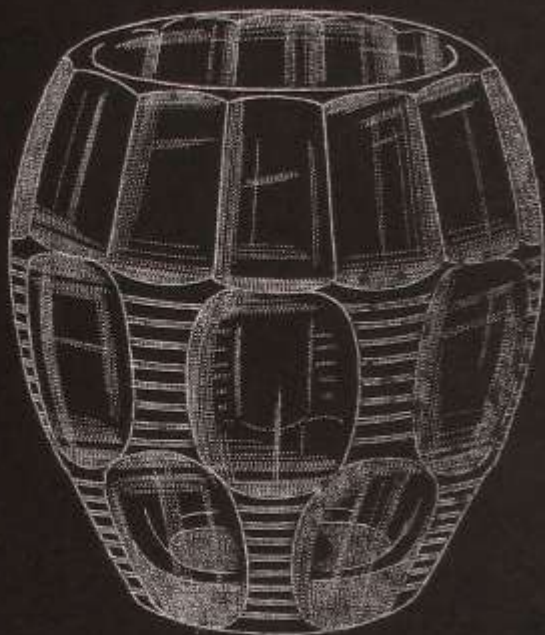


0 150/S 35.
150 m/m

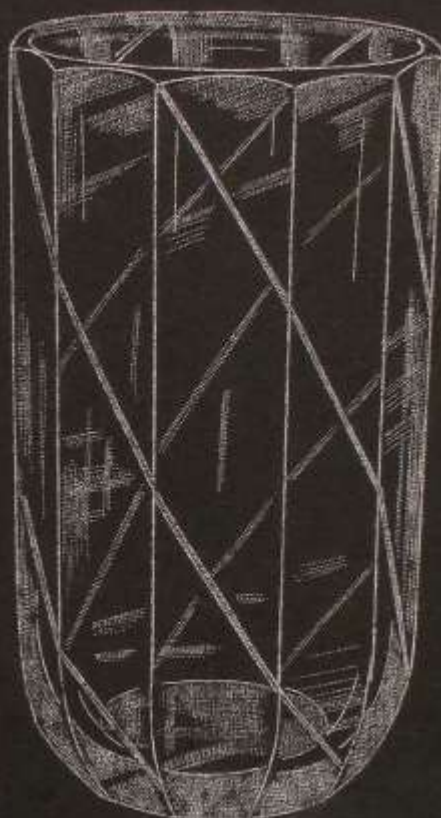


0 150/S 36
125 m/m

A/B. AFORS GLASBRUJ.



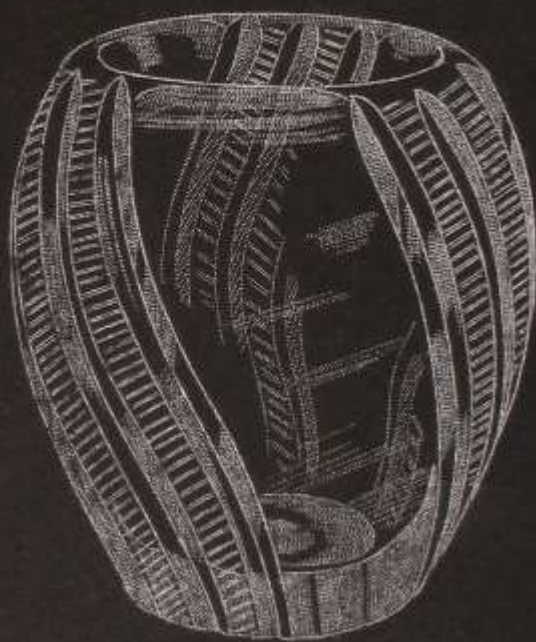
0 150/S 47
125 m/m



0 136/facett
160 m/m



0 150/S 49
125 m/m.



0 150/S 48
125 m/m

A/B. ÅFORS GLASBRUK.



o 151/facett.
110 m/m



o 130/B 59



22 cl.

o 154/oliv.

75 cl.



o 158/s 16
125 m/n.



o 152/s 4 5



o 152/s 44



O 157/S 30
150 m/m



O 158/facett
125 m/m



O 152/facett
150 m/m.



O 153/011v
160 m/m.



S 102/Karlsbad
170 n/m



S 104/facett



S 104/facett



5 cl.



40 cl.
S 104/facett.



70 cl.



S 109/1079
140 m/m



S 108/facett
.65 cl.



S 110/fac.



S 110/facett
32 cl.



S 112/facett

S 112/facett
65 cl.



S 117/Crocus
65 cl.



S 120/Plan
65 cl.



S 129/1031
23 cl.



S 128/1031
75 cl.



S 124/75 cl.



S 125/6 cl.



S 127/1031
65 cl.



S 137/1042
32 cl.



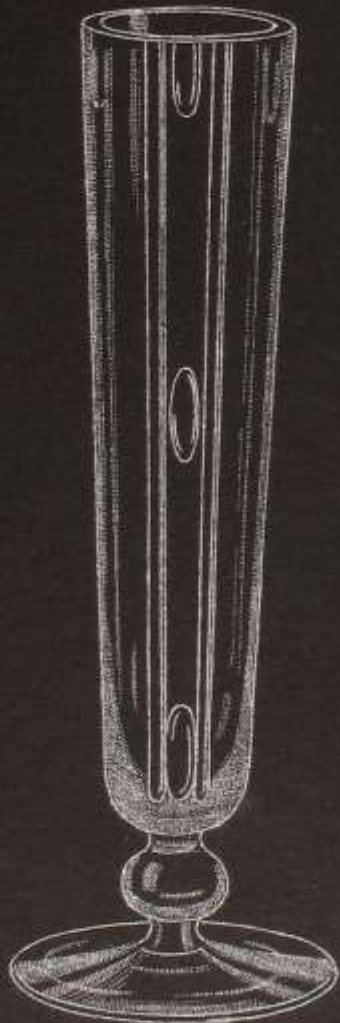
S 133



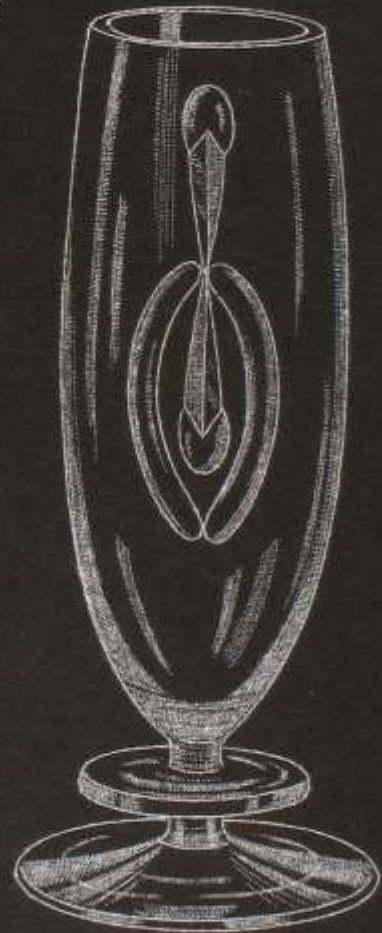
S 134



S 151/Karlsbad
150 m/m
(gulets)



S 149/Gerd
250 m/m.



S 142/Disa
240 m/m



830/G III
6 cl.
höjd 165 mm



S 160/G III
40 cl.



D 334/G III
5 cl.



S 160/W 14
40 cl.



S 161/W 8.
40 cl.



S 162/fac.
40 cl.



S 162/fac.
32 cl.



S 173/oliv
150 cl.



S 169/175 m/m.



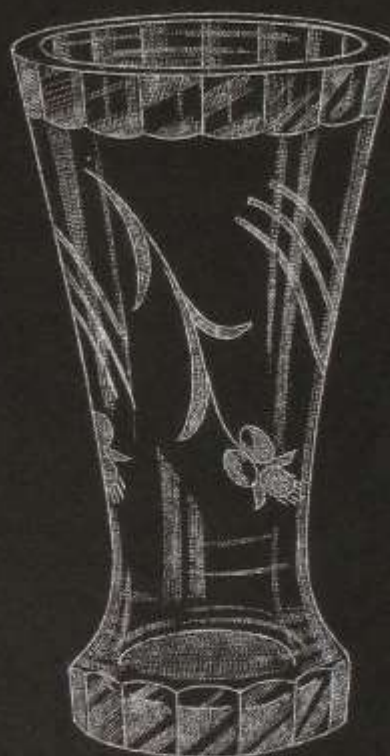
S 176/7½ cl.



S 175/35 cl.



S 189/1065
150 - 250 m/m.

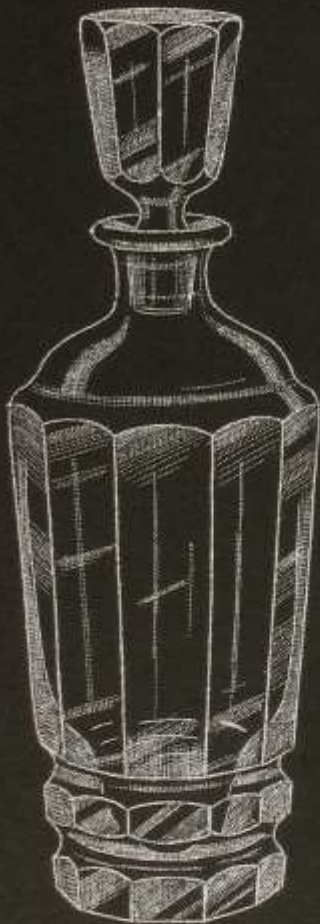


S 197/1074
200 & 280 m/m

1072



S 190/Oliv
225 m/in



S 192/fa c.
65 cl.



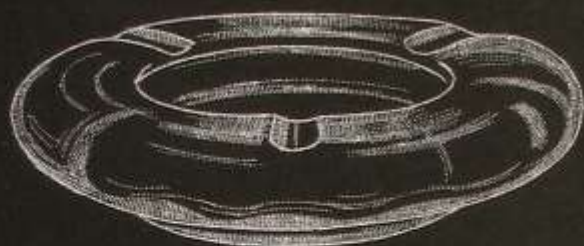
S 191/Oliv
5 cl.



S 191/Oliv
65 cl.



S 193/facett
240 m/m.



S 202/170 m/m



S 203/150 m/m



S 200
200 - 350 m/m



S 199
25 cl.



S 199
200 cl.
höjd 250 m/m



S 215/1069
25 cl.



S 215/1069
130 cl.



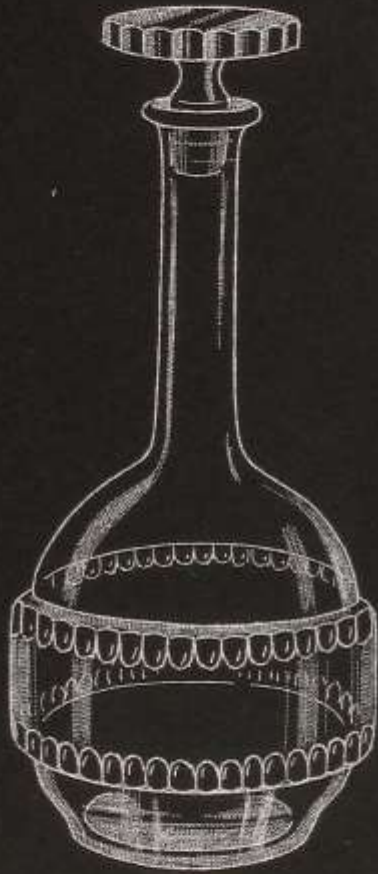
S 215/1069
65 cl.



S 204/01iv
5 cl.



S 204/01iv
32 cl.



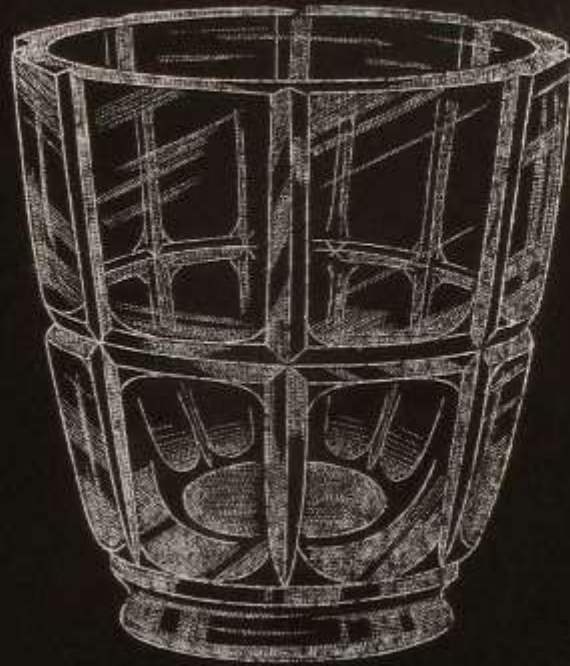
S 218/01iv
32 cl.



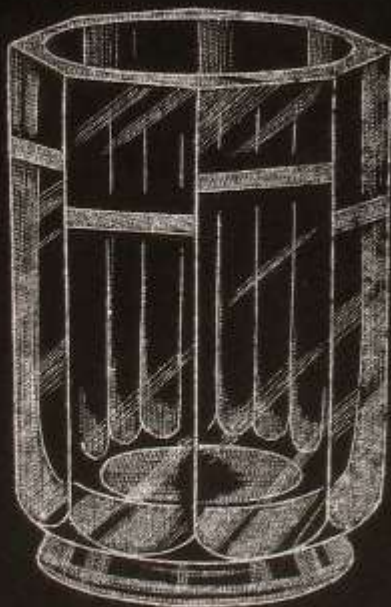
S 217/01iv
32 cl.



S 204/01iv
5 cl.



D 302/925
140 m/m



D 303/926
120 m/m.



D 138/facett
125 m/m



D 341/W 9.
50 cl.



D 340/facett
50 cl.



D 342/W 19.



D 400/926
145 m/m



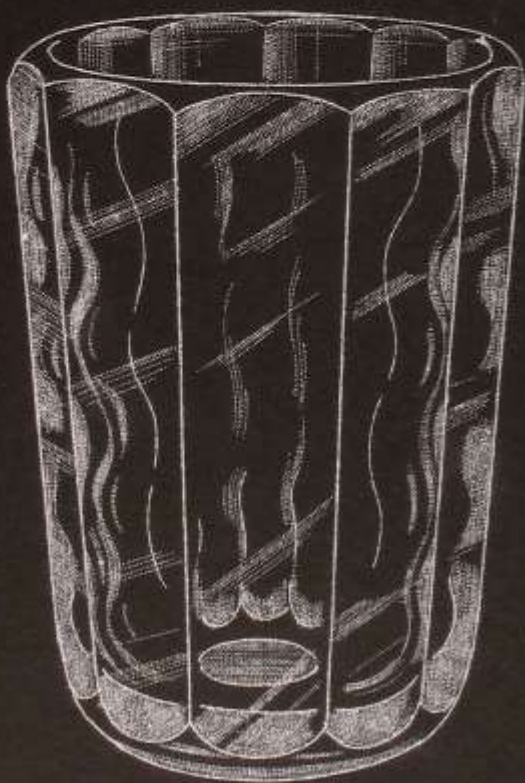
D 360/1067
100 cl.



D 415 25 - 100 cl.



D 799/Fisk
100 mm



D 815/facett
150 & 200 m/m



D 815/Fågel
200 m/m



D 905/3003
23 cl.



D 905/3003
100 cl.



D 855/Birgitta
32 & 65 cl.



D 853
Birgitta
2½ & 7½ cl.



D 907/960
100 cl.



65 cl.

5005/B 3/4



12023/B 3/4
7 1/2 cl.



3000/graverad
60 m/m



3000/graverat
90 m/m



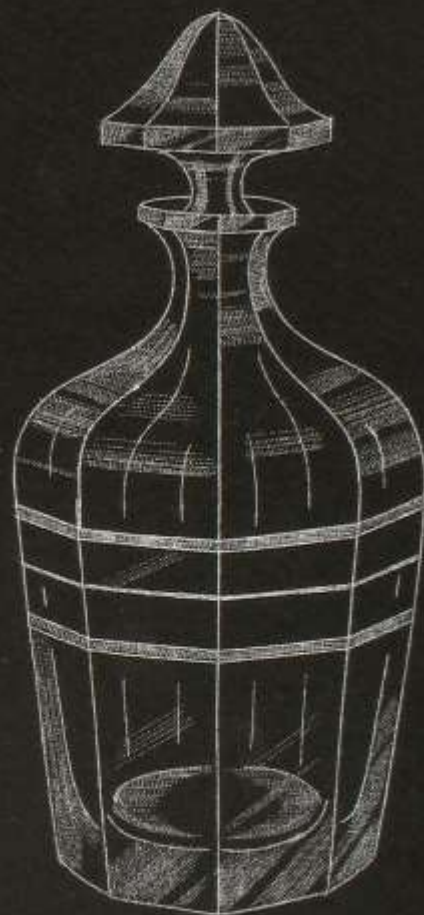
C/Torgny
65 cl.
(gulets)



3029/W h.
200 m/m



2054/929
5 cl.



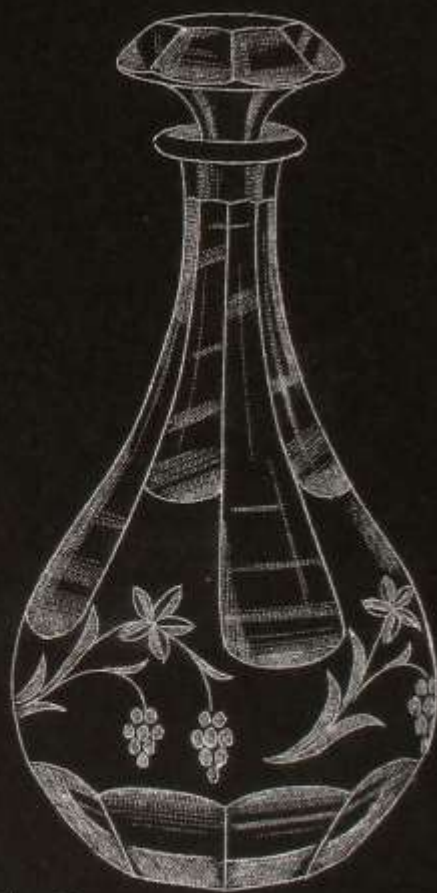
2054/929
65 cl.



407/Wilma



1064/Signhild



2038/1087



D 336/W 13.
95 m/m



D 334/fac.
5 cl.



D 334/slät
5 cl.



H/Wilma
(gulets)



D 305/Wolma
65 cl. (gulets)



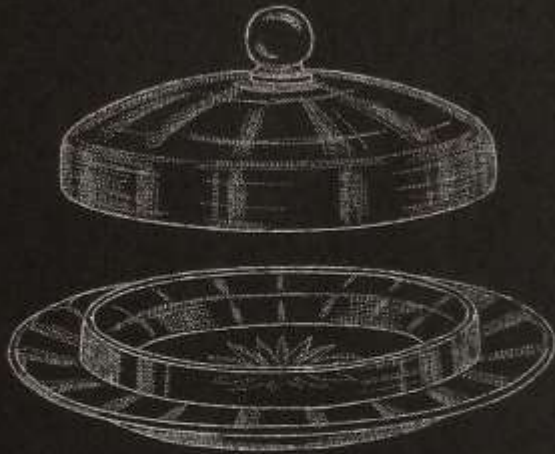
D 811/Marianne
200 m/m



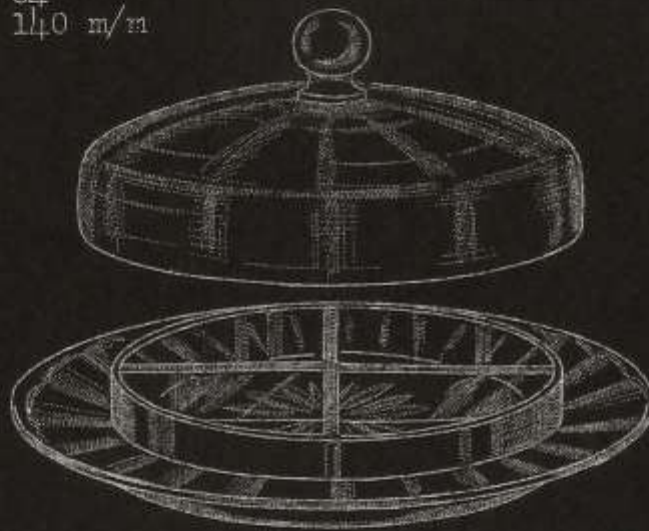
D 819/W 8.
200 m/m



D 819/Falk.
200 m/m



81 & 84
175 & 140 m/m



86/300 m/m



82/200 m/m



V 302
180 - 230 m/m



A 811
Höjd med propp 300 m/m
rymd 50 cl.



Vike/4 cl.
höjd 140 m/m



A 811
30 & 40 cl.



A 703/B 19
100 c l.



A 702/1120
80 cl.



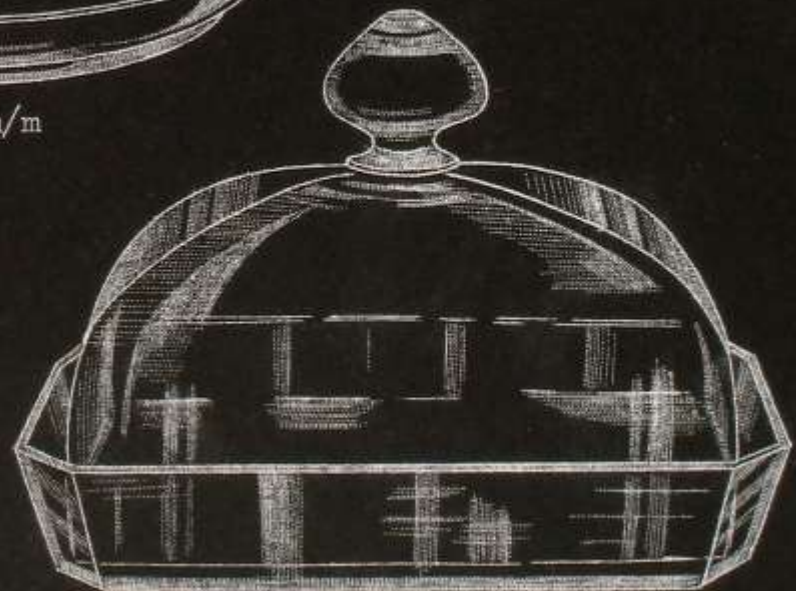
A 704/B 23
100 cl.



oval/135 x 175 m/m



A 601/160 m/m



4 kant/125 x 175 m/m



410/B 37



A 412/35 cl.



A 403/10 cl.
170 m/m



Λ 20/w 1.
230 m/m



25 cl.



15 - 45 cl.



Champagnegl.



Brännvinsgl.



Maderaskål

Servis "Krona"



Champagnegl.



Maderaskål



15 - 45 cl.



65 cl.



Brännvinsgl.



25 cl.

Servis " 0 56 "



Champagnegl.



Brännvinsgl.



Maderaskål



15 - 45 cl.



25 cl.

Servis "O 110/S 41"



65 cl.



25 cl.



Brännvinsgl.



Madeiragl.



Champagnegl.



15 - 45 cl.

Servis "Eva/1024"



25 cl.



Madeiraskål



Brännvinsgl.



Champagneskål



15 - 45 cl.

Servis "Konrad/B 17."



25 cl.



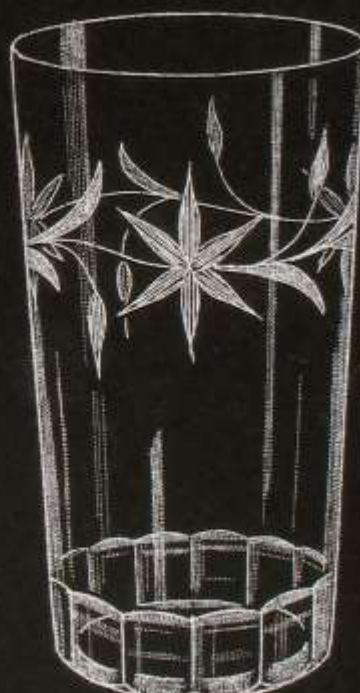
Madeiraskål



Brännvinsgl.



Champagneglas.



15-45 cl.

Servis " Sverre/1017 "



15 - 45 cl.



Madeiraskål



Likörskål



Brännvinsgl.



25 cl.



65 cl.

Servis "0 11/Facett".



15 - 45 cl.



Champagnegl.



Maderiaskål



Brännvinsgl.



25 cl.



65 cl.

Servis "O 12/Evy"



Champagneskål



Madeiraskål



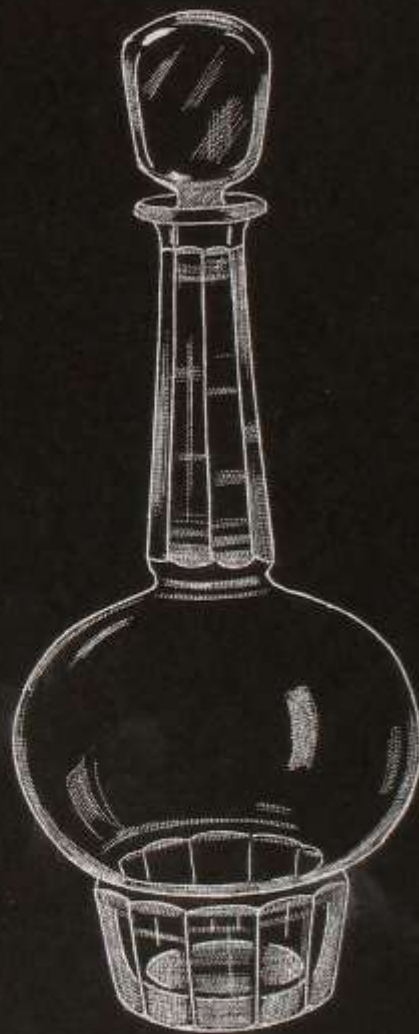
15 - 45 cl.



Brännvinsgl.



25 cl.



65 cl.

Servis " 0 14/facett".



25 cl.



Brännvinsgl.



Maderaskål

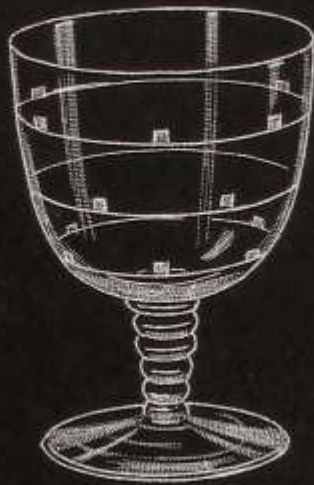


Champagneskål



15 - 45 cl.

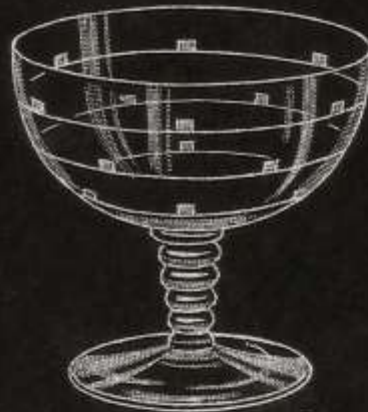
Servis: "0 92/facett".



25 cl.



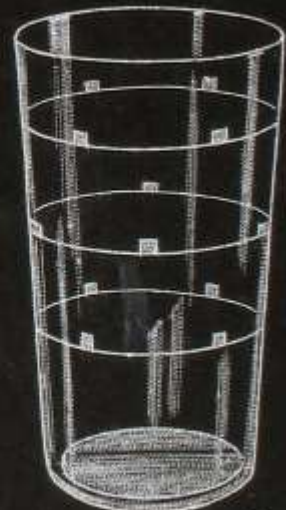
Madeiraskål



Champagnegl.



Brännvinsgl.



15 - 45 cl.



15 - 45 cl.



Brännvinsgl.



25 cl.



Likörskål



Maderaskål

Servis "095/S 39".



15 - 45 cl.



Brännvinsgl.



25 cl.



Likörskål



Maderaskål.

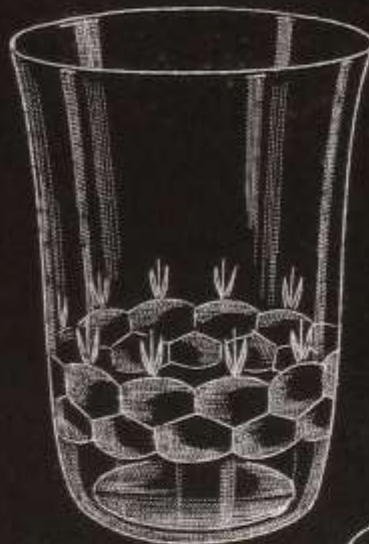
Servis "095/B 53".



25 cl.



Brännvinsgl.



15 - 45 cl.



Likörglas



Madeiraskål

Servis: "096/Fjäll"



25 cl.



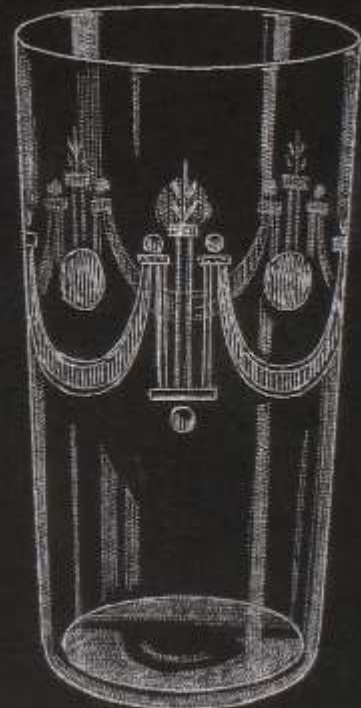
Madeiraskål



Brännvinsgl.



Champagnegl.



15 - 45 cl.

Servis: "097/Molly"



25 cl.



Madeiraskål



Brännvinsgl.



Champagneskål



15 - 45 cl.

Servis: "098/s 40"



25 cl.



Brännvinsgl.



Madeiraskål



Champagnegl.



15 - 45 cl.

Servis: "098/B 54".



25 cl.



Brännvinsgl.



Likörskål



Champagnegl.



15 - 45 cl.

Servis "098/Wisby."



25 cl.



Brännvinsgl.



Madeiraskål



Champagneskål



15 - 45 cl.

Servis:
H 1008/Åre



25 cl.



Maderaskål



Brännvinsgl.

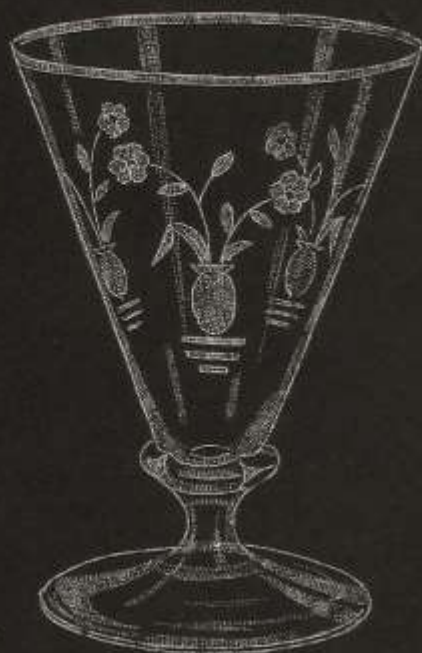


Champagneskål



15 - 45 cl.

Servis: "H1010/Roma".



25 cl.



Brännvinsgl.



Maderaskål



Champagneskål



15 - 45 cl.



25 cl.



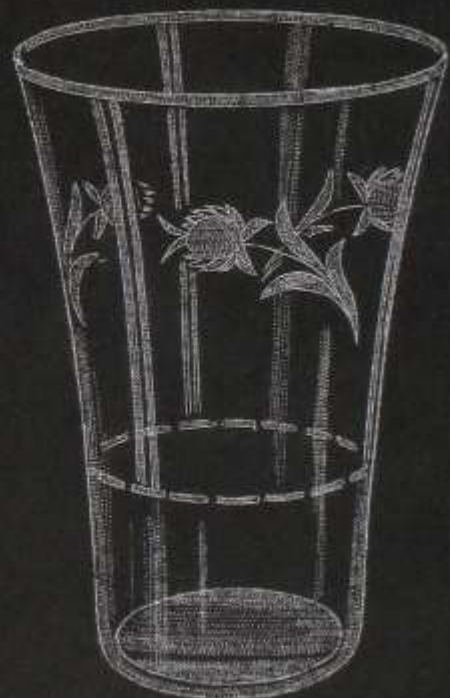
Brännvinsgl.



Maderaskål

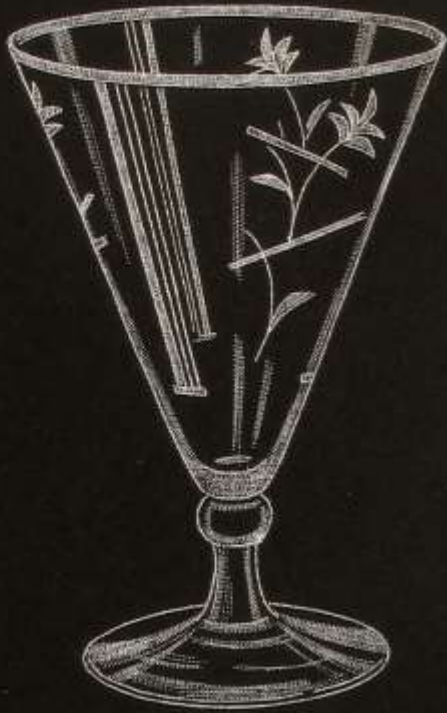


Champagneskål.



15 - 45 cl.

Servis: "H 1011/Boje".



25 cl.



Brännvinsgl.



Madeiraskål

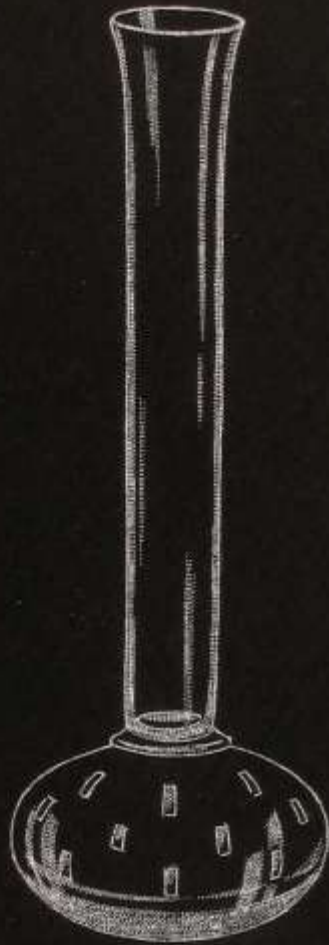


Champagneskål



15 - 45 cl.

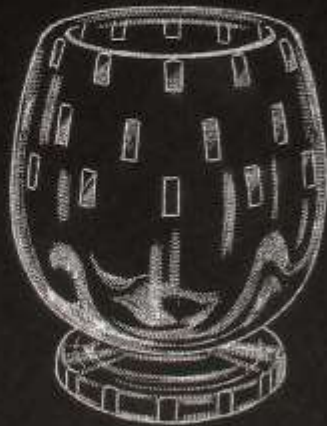
Servis: "H 1012/City".



0 177/S 8.
225 m/m.



0 178/S 60
105 m/m.



0 178/S 8.
105 m/m.



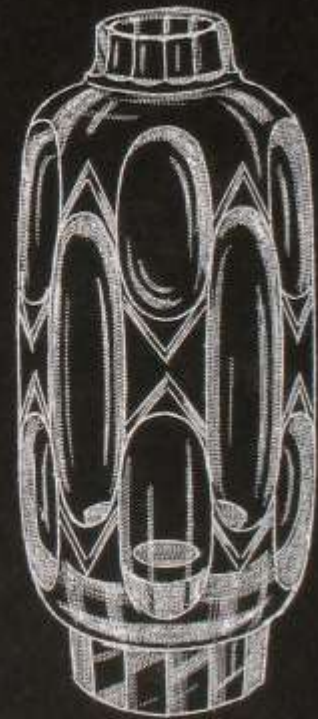
0 178/S 61
105 m/m.



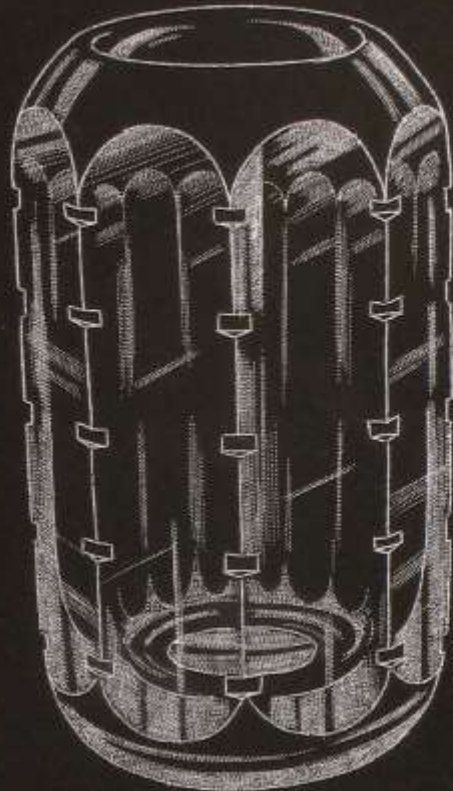
0 180/•optic.
200 m/m



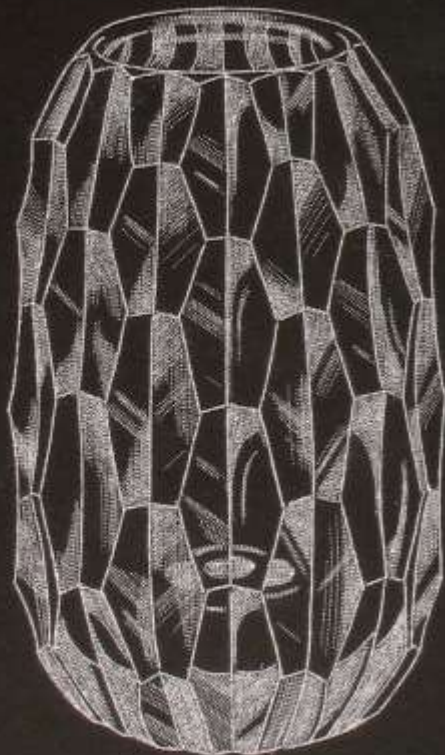
0 179/ S 62
190 m/m



0 179/S 63
190 m/m.



o 181/ S 73
190 m/m.



o 181/ S 52.
190 m/m

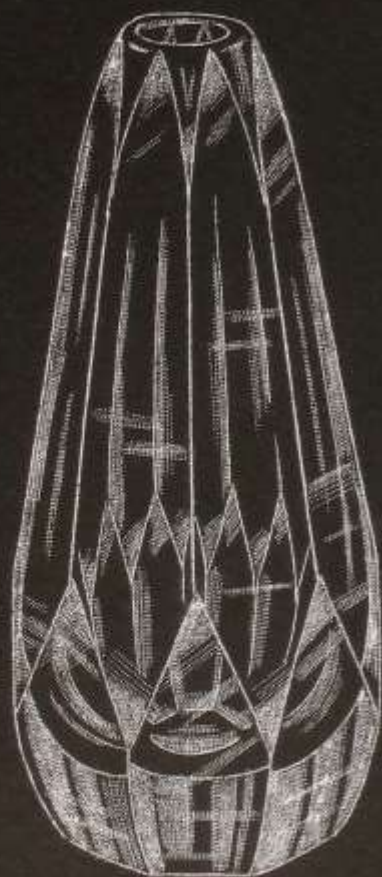


o 181/S 76
190 m/m

A/B. AFORS GLASERUK.



0 182/S 65
190 m/m.



0 183/Facett
240 m/m



0 183/S 66
240 m/m.



o 184/Oliv
225 m/m.



o 184/s 67.
225 m/m.



o 184/s 68
225 m/m.



0 185/S 69
190 m/m



0 185/011v
190 m/m

A/B. ÅFORS GLASBRUK.



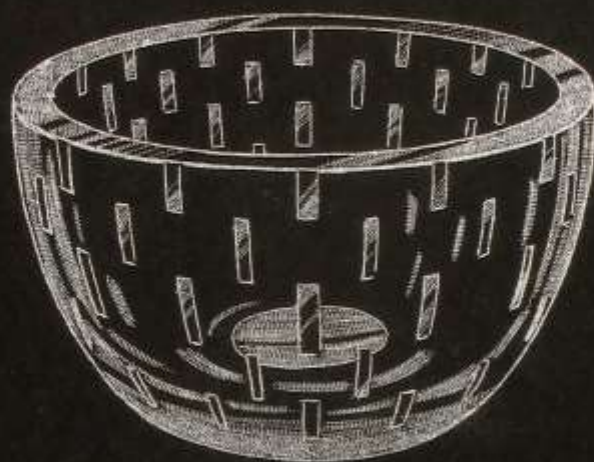
o 186/ s 52.
180 m/m



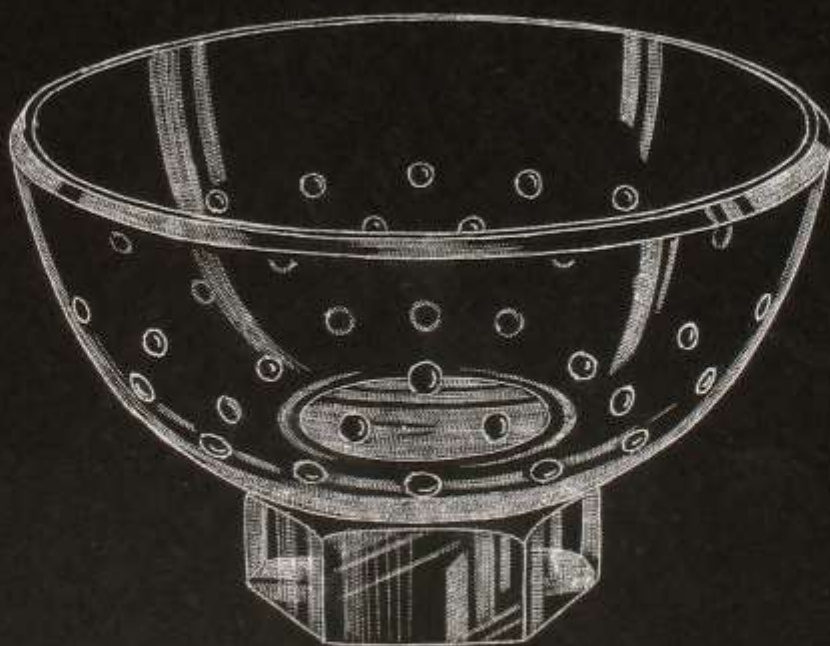
o 186/011v
180 m/m



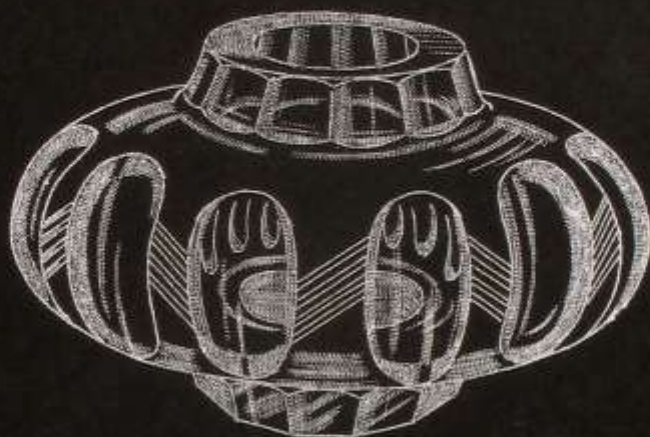
o 187/s 77
80 m/m.



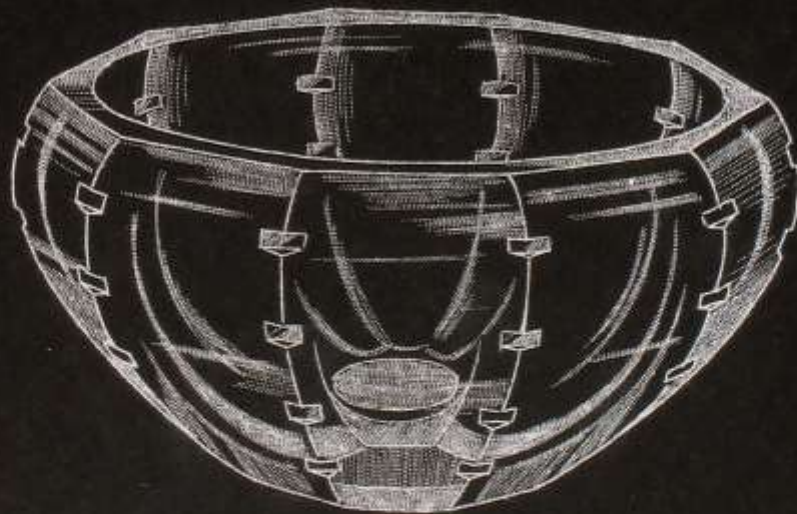
o 191/s 8.
135 m/m.



o 189/s 72.
180 m/m.



o 193/s 74.
110 m/m



o 192/s 73
170 m/m.



O 194/Facett
40 cl.



O 195/Oliv
190 m/m.



0 197/s 71
165 m/m.



0 197/s 72
45 cl.



0 197/s 72
15 cl.



S 197/s 72
10 cl.



0 196/s 72.
65 cl.



0 198/170 m/m



0 198/ 200 m/m.



0 200
260 m/m.



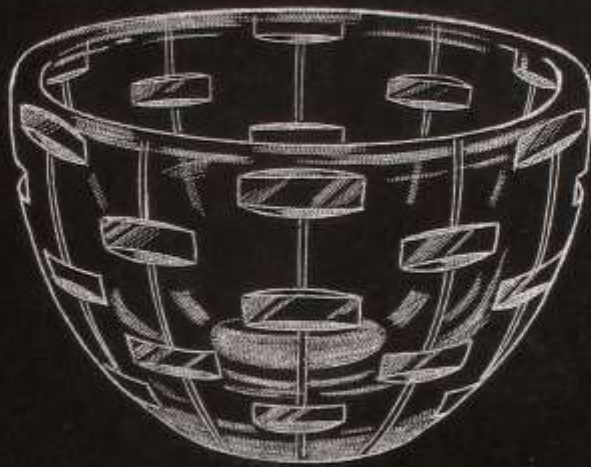
0 202/Facett.



0 206/S 8.
110 m/m



0 203/01iv
185 m/m.



0 207/S 61.
150 m/m.



0 208
280 m/m



H 1103/Fjäril
100 m/m.



H 1103/Ödla
120 m/m.



H 1103/Tullan
150 m/m



H 1103/Gravell
130 m/m.



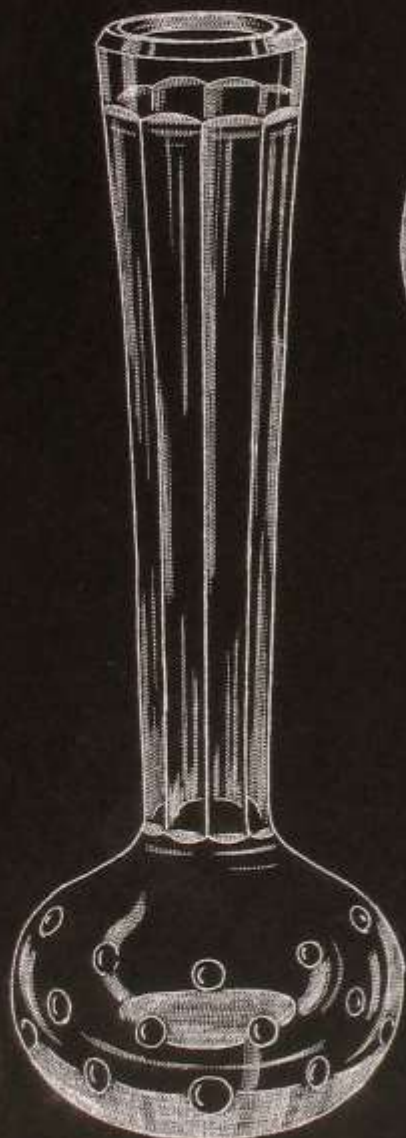
H 1004/Fjäril
80 m/m



H 1004/Ödla
90 m/m



H 1004/Salmi
110 m/m



H 1129/Kula
210 m/m.



H 1004/Maritza
130 m/m

A/B. fers Glasbruk.

P R I S L I S T A.

Sid. Page		Storlek Size	Färgglas (Colour)	Hel kristall
83	Vas 0 177/s 8.	105 mm		16:--
	" 0 178/s 8.	105 "		8:--
	" 0 178/s 60	105 "		8:50
	" Ø 178/s 61	105 "		10:--
84	Vas 0 180	210 mm	2:50	
	" Ø 179/ s 62	190 "		15:--
	" 0 179/s 63	190 "		16:--
85	Vas 0 181/s 52	190 mm		30:--
	" 0 181/s 73	190 "		22:--
	" 0 181/s 76	190 "		24:--
86	Vas 0 182/s 65	190 mm.		19:--
	" 0 183/Facett	240 "		20:--
	" 0 183/s 66	240 "		20:--
87	Vas 0 184/Oliv	225 mm		20:--
	" 0 184/s 67	225 "		21:--
	" 0 184/s 68	225 "		16:--
88	Vas 0 185/s 69	190 "		18:--
	" 0 185/Oliv	190 "		20:--
89	Vas 0 186/s 52	180 mm		25:--
	" 0 186/Oliv	180 "		17:--
	" 0 187/s 77	80 "		5:--
90	Skål (Bowl) 0 191/s 8.	135 mm.		12:--
	" " 0 189/s 72	180 "		18:50
91	Vas 0 193/s 74	110 mm		20:--
	Skål (Bowl) 0 192/s 73	170 "		26:50
92	Karaff (Decanter) 0 194/facett	40 cl.		15:--
	Skål (Bowl) 0 195/Oliv	190 mm.		16:--
93	Vas 0 197/s 71	165 mm		14:50
	Grogglas (Tumbler) 0 197/s 72	45 cl.		5:50
	Seltersglas " d:o.	15 "		3:50
	Vinglas (Vine) d:o.	10 "		3:--
	" (Wine) 0 197/slät	10 "		2:--
	Karaff (Decanter) Ø 197/s 72	65 "		12:--
	" " 0 197/slät	65 "		9:--
94	Vas 0 198/opt.	125 mm	2:--	
	" d:o.	170 "	2:25	
	" d:o.	250 "	2:50	
	" 0 200	260 "	10:--	

A/B. ÅFORS GLASBRUK.

P R I S L I S T A.

Sid. Page		Storlek Size.	Färgglas. Colour.	Hel- kristall
95	Paraff (Decanter) 0 202/Facett	40 cl.		20:--
	Vas 0 206/s 8.	110 mm.		8:--
	" 0 203/oliv	185 mm.		19:--
96	Skål (Bowl) 0 207/s 61.	150 mm.		17:--
	" " 0 208/opt.	280 "	3:--	
97	Vas H 1103/Fjäril	100 mm		6:--
	" " /Ödla	120 "		8:25
	" " /Cravall	130 "		12:--
	" " /Tullan	150 "		22:--
98	Vas H 1104/Fjäril	80 mm.		5:--
	" " /Ödla	90 "		7:50
	" " /Salmi	110 "		11:--
	" " /Maritza	130 "		21:50
	" H 1129/Kula	210 "		8:75
	" " /"	260 "		12:--